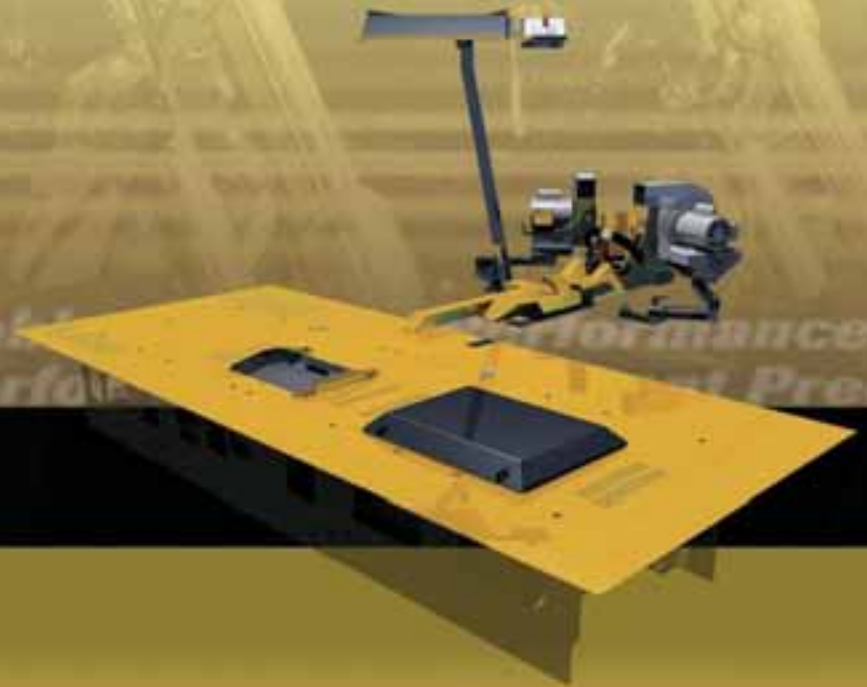




Dynojet



**2008 Dynamometer
& Diagnostic Test Equipment**

Dynojet

Why is a Dynojet Dyno the most accurate & consistent chassis Dyno you can buy (at any price)?

- Durable and maintenance free design
- Large diameter precision balanced drum
- No maintenance or re-calibration required (each individual dyno is accurately calibrated for inertia mass, bearing and air drag)
- High data sampling rate ensures accurate and repeatable data
- Drive-train condition verification through coast-down testing
- Automatic correction for atmospheric conditions (All Internationally accepted standards available)
- Real-time RPM measurement (accurate to +/- 1/10th RPM)
- Inductive RPM pickup system detects ignition misfires
- Software automatically calculates gear ratios
- Software automatically detects clutch or tire slippage
- User manuals included in software.
- Training courses available
- Unlimited 1-800 Toll-Free Tech Support (US only) and prompt email support

About Dynojet Research

Established in 1972, Dynojet is a Research & Development company, employing over 100 people in Montana, Nevada, Holland, Germany and England. Dynojet Research develops aftermarket performance products and diagnostic tools for the Motorcycle and Automotive industries. Dynojet's extensive product development testing required the use of a Dynamometer. Unable to find a Dynamometer to meet the needs of our Research & Development staff, Dynojet went to the drawing boards and pioneered the first single roller, inertia, chassis Dynamometer for motorcycles in 1989. Shortly thereafter Dynojet developed a computer interface and software package and began selling the first Model 100 Motorcycle Chassis Dynamometer. The Model 100 proved to be affordable, reliable, accurate and above all consistent. This was the case not only from one measurement to the next, but also from one Dynojet Dynamometer to another, enabling communication and sharing of test data. The success of the Model 100 led to further developments in chassis dynamometer technology culminating with our current Model 250i dynamometer.

Customer Support

As a leading after-market product development company, Dynojet uses its Dynamometers on a daily basis testing everything from touring motorcycles to exotic factory race only vehicles. This is important because every Dynojet Dynamometer owner can contact our support team for interpretation and analysis of the data provided by the Dynamometer. Dynojet's involvement with racing programs and our own successful line of performance products, enables us to attract the best talent in the motorcycle industry. This provides you with the highest level of service and support.

Durability

We build the Dynojet Dynamometer to last. It is a durable, low maintenance instrument. Our reputation and willing technical support are your guarantees that the Dynojet Dynamometer will live up to our promises.

Credibility

With the Dynojet Dynamometer it is easy to establish credibility for your shop. Before and after dyno runs on service or performance work help to establish shop credibility. Today's customer wants proof that what he is paying for works. Dyno graphs of aftermarket products, spark plugs and even oil brands can prove performance and reliability of products.

The World Standard

The Dynojet Dynamometer is the most widely recognized chassis dynamometer with more than 5,600 installations in over 57 countries. These installations include OEM motorcycle manufacturers, importers, exhaust manufacturers, tuners, race teams, dealers, service shops, motorcycle and ATV magazines. Dynojet has long term partnerships with industry leading companies worldwide, ensuring local technical support for most of our customers.

| Contents | Page |
|--|-------------|
| Model 250i | 4-5 |
| Model 200i | 6-7 |
| Model 250ix | 8-9 |
| Features and Options | 10-11 |
| Air/Fuel Ratio Module/ DynowareEX+ | 12-13 |
| WINPEP 7 | 14-17 |
| Winpep.com/Training | 18-19 |
| Power Commander Approved Tuning Center | 20 |
| Tuning Link | 21 |
| Specifications | 22-23 |



Dynojet

R E S E A R C H

2191 Mendenhall Drive, North Las Vegas, NV 89081

Tel: 800-992-3525

Fax: 702-399-6385

Email : dynosales@dynojet.com



Official Dynamometer of the AMA U.S. Superbike Championship



Official Chassis Dynamometer of the NMRA



Official Chassis Dynamometer of the NMCA



Official Dynamometer of AMA ProStar Drag Racing Series



The Official Dynamometer of AHDRA



The Official Dynamometer of Motorcycle Mechanics Institute



Dynojet Dynamometers used at Multiple Wyotech Locations



The Official Dynamometer of RTM Productions Power Block TV Shows



The Official Dynamometer PowerTV

Dynojet Dynamometers used by:

Racing Teams

- American Honda Racing
- Yoshimura Suzuki
- Team Kawasaki
- Team Yamaha
- Erion Racing
- Team Valvoline/Emgo Suzuki
- Graves Yamaha
- Monster Mob Ducati UK
- Pro Circuit
- TAS Suzuki UK
- Crescent Racing UK
- V&M Racing UK
- Ducati SBK

Schools

- MMI Phoenix
- MMI Orlando
- Wyotech

Exhaust Companies

- Akrapovic
- Leo Vince
- Arrow
- M4 Exhaust
- Hindle
- Yoshimura
- Pro Circuit
- Blue Flame UK
- Micron UK
- Vance and Hines
- FMF
- Two Brothers Racing
- Muzzy's
- Erion

TV Shows

- Power Block TV
- Dream Car Garage
- All Terrain TV

The Dynojet Load Control System was developed through years of experience with over 5,600 dynamometer installations worldwide. The design is easy to operate and provides the function of steady state load control. Dynojet's Load Control System uses the latest in eddy current power absorption technology, which combines with our easy to use software, so any technician can get repeatable, consistent results. The Load Control software provides the technician with the ability to control vehicle RPM or Speed at any throttle opening. Through our exclusive closed-loop software design, the vehicle is automatically held at your pre-determined setting.

With the addition of the optional torque cell package, the dyno has the capability of a more complete range of tests, including step and sweep tests.

Closed-loop control of Speed or RPM

Easy-to-use software, push button operation

Test vehicles at full or partial throttle

Absorption unit capable of 858 lb/ft torque

Optional closed-loop Torque control module

Above-Ground or Pit installation available

Control pod & stand

Quick-mount wheel lock & safety strap for one person loading

Wide platform for easy loading & unloading

Precision balanced and knurled drum with large tire contact patch

Integrated tie down mounting locations

Eddy Current Load Absorption Unit capable of 858 lb/ft absorption

Dynojet
Model 250i

Powder coated design for enhanced durability and looks

Integrated Air/Fuel Monitor (optional)

Model 250i

Load Control Dynamometer

Powersports Dynamometer X Upgrade

Upgrade an existing 200i or 250i to accommodate ATV's, Side-by-Sides, Go-Karts, and Trikes

Model 250i pit

Load Control Dynamometer

Model 250i pit

Shown with optional Monitor Tray, Integrated Fans and Electronics Cart.

Specifications / Requirements

Dedicated 240v 30amp single-phase circuit

Maximum Horsepower: 750hp

Maximum Speed: 200mph (322 KPH)

Timing Accuracy +/- 1 microsecond

Drum Speed Accuracy +/- 1/100th MPH

RPM Accuracy +/- 1/10th RPM

250i

Above Ground Model Standard Features and Equipment

- Measures up to 750hp and 200mph
- Software and hardware to interface *(PC, monitor and printer not included)*
- Powder coated chassis with wheelbase capability up to 84 inches *(from rear axle to front tire)*
- Eddy Current Load Absorption Unit
- Integrated control panel stand with console
- Ignition wire inductive tachometer pickup leads
- Front wheel lock
- Automatic atmospheric conditions measurement *(absolute pressure, air temp, humidity)*
- Starter system to spin roller *(12V battery required)*
- Installation, operation manuals and software included
- One year replacement parts warranty

Pit Model Standard Features and Equipment

- Measures up to 750hp and 200mph
- Software and hardware to interface *(PC, monitor and printer not included)*
- Eddy Current Load Absorption Unit
- Integrated control panel stand with console
- Power carriage for button operated wheelbase adjustment
- Ignition wire inductive tachometer pickup leads
- Pit covers
- Compact design allows for smaller pit size
- Front wheel lock
- Starter system to spin roller *(12V battery required)*
- Automatic atmospheric conditions measurement *(absolute pressure, air temp, humidity)*
- Installation, operation manuals and software included
- One year replacement parts warranty

Options Available Model 250i/250i pit

Air/Fuel Ratio Module
Dual Multi-Axis Cooling Fans
Monitor Tray
Air Brake/ EEC Safety
Extended Carriage
Power Clamp
Power Carriage
Fat Boy Wheel Adapter
Folding Ramp
Analog Module
Torque Cell Module
250x Powersports Upgrade

For details about optional accessories see page 10-11

Model 200i

Inertia Chassis Dynamometer

Above Ground Model Standard Features and Equipment

- Measures up to 750hp and 200mph
- Software and hardware to interface
(PC, monitor, and printer not included)
- Powder coated chassis with wheelbase capability up to 84 inches
(from rear axle to front tire)
- Integrated control panel stand with console
- Ignition wire inductive tachometer pickup leads
- Front wheel lock
- Automatic atmospheric conditions measurement
(absolute pressure, air temp, humidity)
- Starter system to spin roller (12V battery required)
- Installation, operation manuals and software included
- One year replacement parts warranty

Pit Model Standard Features and Equipment

- Measures up to 750hp and 200mph
- Software and hardware to interface
(PC, monitor, and printer not included)
- Integrated control panel stand with console
- Power carriage for button operated wheelbase adjustment
- Ignition wire inductive tachometer pickup leads
- Pit covers
- Compact design allows for smaller pit size
- Front wheel lock
- Starter system to spin roller (12V battery required)
- Automatic atmospheric conditions measurement
(absolute pressure, air temp, humidity)
- Installation, operation manuals and software included
- One year replacement parts warranty

Integrated Air/Fuel Ratio

The addition of the Air/Fuel Ratio Monitor can be used to accurately and effectively tune fuel-injected motorcycles equipped with a Dynojet Power Commander.

Air Brake Option

The Brake option can be added to the Dyno to quickly slow the drum after the run. This is recommended when testing two-stroke motorcycles which do not have as much engine braking.

200i Pit Model

The 200i is also available in pit configuration, shown here with optional power carriage, integrated fans and electronics cart.

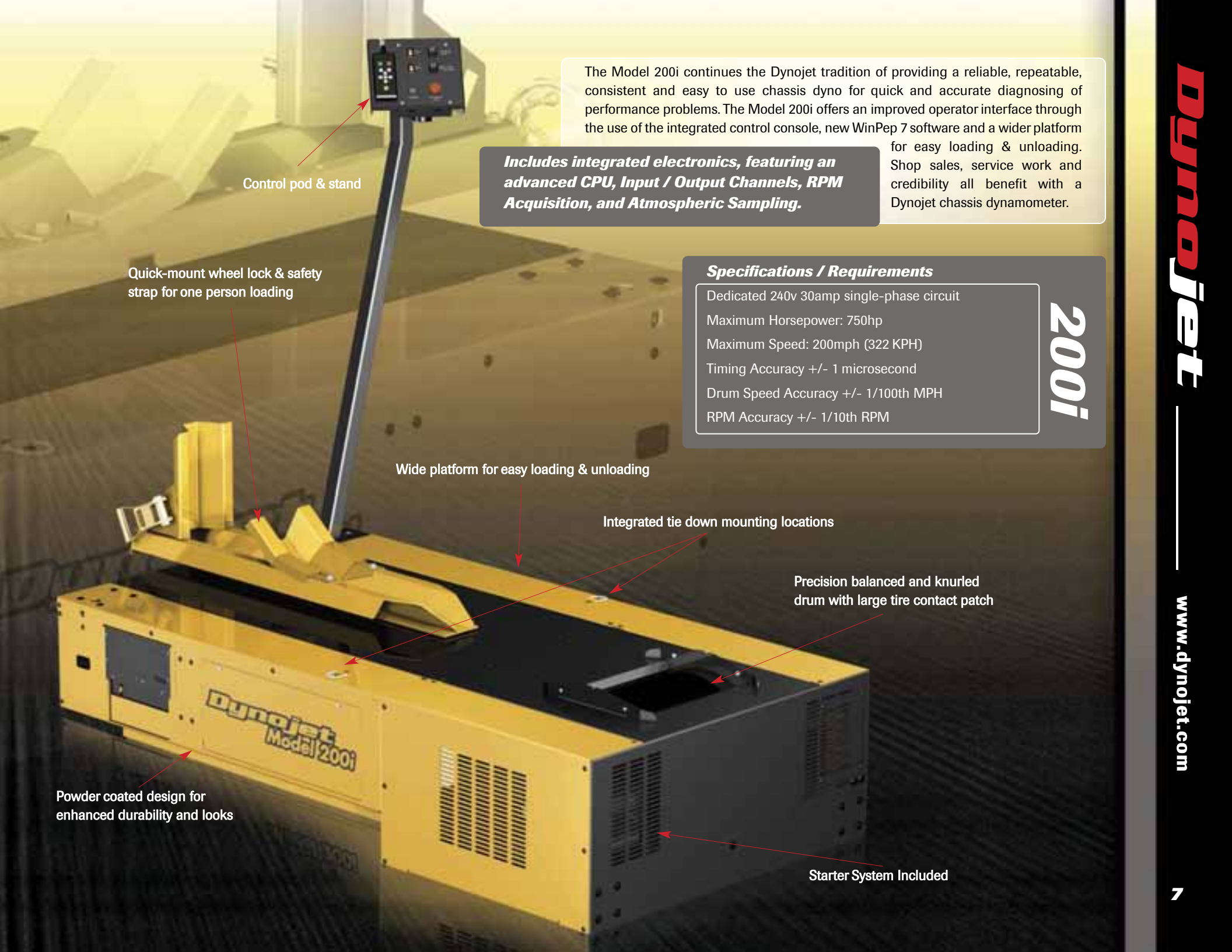
Options Available

Air/Fuel Ratio Module
Monitor Tray
Extended Carriage
Power Carriage
Folding Ramp
Torque Cell Module
250x powersports upgrade

Model 200i/200i pit

Dual Multi-Axis Cooling Fans
Air Brake/ EEC Safety
Power Clamp
Fat Boy Wheel Adapter
Analog Module
Eddy Current Load Absorption Unit

For details about optional accessories see page 10-11



Control pod & stand

Quick-mount wheel lock & safety strap for one person loading

Wide platform for easy loading & unloading

Integrated tie down mounting locations

Precision balanced and knurled drum with large tire contact patch

Powder coated design for enhanced durability and looks

Starter System Included

The Model 200i continues the Dynojet tradition of providing a reliable, repeatable, consistent and easy to use chassis dyno for quick and accurate diagnosing of performance problems. The Model 200i offers an improved operator interface through the use of the integrated control console, new WinPep 7 software and a wider platform

Includes integrated electronics, featuring an advanced CPU, Input / Output Channels, RPM Acquisition, and Atmospheric Sampling.

for easy loading & unloading. Shop sales, service work and credibility all benefit with a Dynojet chassis dynamometer.

Specifications / Requirements

- Dedicated 240v 30amp single-phase circuit
- Maximum Horsepower: 750hp
- Maximum Speed: 200mph (322 KPH)
- Timing Accuracy +/- 1 microsecond
- Drum Speed Accuracy +/- 1/100th MPH
- RPM Accuracy +/- 1/10th RPM

200i

The Powersports Chassis Dynamometer gives you the advanced technology, durability, and accuracy you need, all at an affordable price.

Dynojet's cutting-edge engineering delivers the precise horsepower measurements a technician needs to make quick and accurate evaluations of engine and drive-train performance. This allows you to maximize your shop's potential with increased sales, service efficiency, and shop credibility. The dyno's durable, low-maintenance construction ensures that you will be investing in many years of flawless tuning and troubleshooting.

By eliminating the need for engine removal, the vehicle mounting time is as little as 5 minutes. A technician can then perform a simple test and examine the results right in the shop. Utilizing the Dynojet WinPEP software, the dyno operator can evaluate the entire drive-train condition for the purpose of routine servicing or all-out performance development.

The same technology that has made the Dynojet Motorcycle Chassis Dynamometer the industry standard has led to the development of this dynamometer engineered for most other powersports platforms (ATV's, Side-by-Sides, Go-Karts, and Trikes). The Dynojet Powersports Dynamometer allows for complete drive-train testing by measuring performance at the drive wheels. Existing Model 200i or 250i owners can upgrade their equipment to increase capabilities.

Control pod , stand & optional monitor tray

Dual Multi-Axis Cooling Fan system (optional)

Quick-mount wheel lock & safety strap for one person loading

Wide platform for easy loading & unloading

Dual precision balanced and knurled drums

Eddy Current Load Absorption Unit capable of 858 lb/ft absorption

Integrated Air/Fuel Monitor (optional)

Options Available

Model 250ix/250ix pit

Air/Fuel Ratio Module
Monitor Tray
Power Carriage
Analog Module

Dual Multi-Axis Cooling Fan System
Extended Carriage
Fat Boy Wheel Adapter
Torque Cell Module

Model 250ix

Powersports Chassis Dyno

Specifications / Requirements

Dedicated 240v 30amp single-phase circuit
Maximum Horsepower: 750hp
Maximum Speed: 200mph (322 KPH)
Timing Accuracy +/- 1 microsecond
Drum Speed Accuracy +/- 1/100th MPH
RPM Accuracy +/- 1/10th RPM

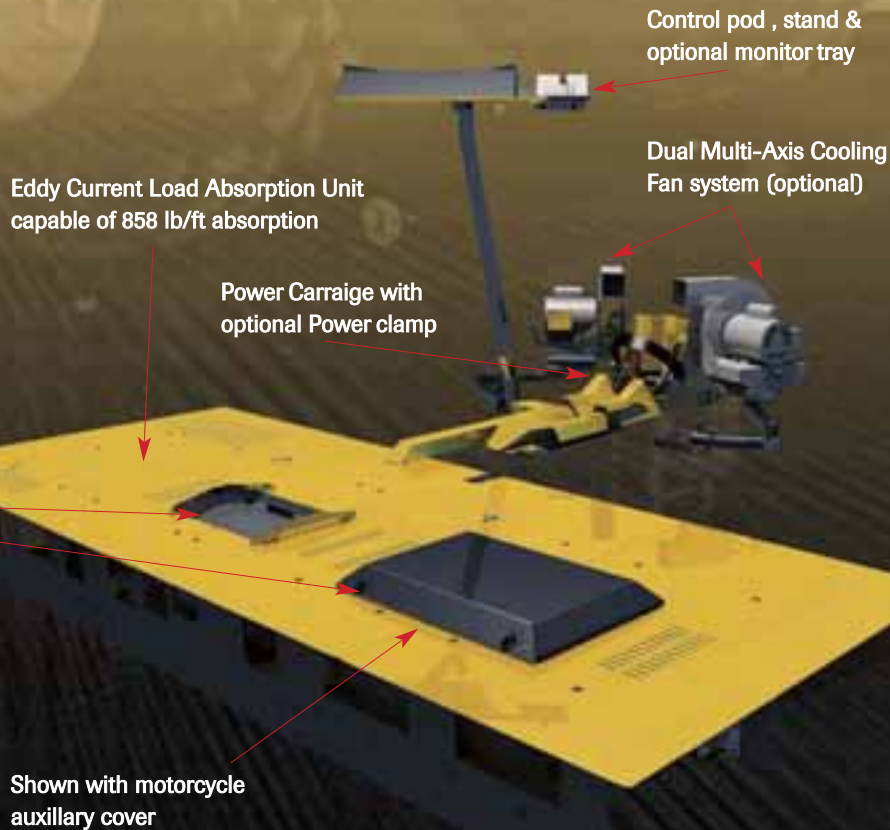
250ix

Above Ground Model Standard Features and Equipment

- Measures up to 750hp and 200mph
- Software and hardware to interface (PC, monitor, printer, not included)
- Dual precision balanced drums, main drum width (16.38), auxilliary drum width (22")
- Dynamometer chassis, outside-to-outside drum widths: Model 250ix (56") and inside width (17.63")
- Ignition wire inductive tachometer pickup leads
- Eddy Current Load Absorption Unit
- Automatic atmospheric conditions measurement (absolute pressure, air temp, humidity)
- Starter system to spin roller (12V battery required)
- Installation, operation manuals and software included
- One year replacement parts warranty

Pit Model Standard Features and Equipment

- Measures up to 750hp and 200mph
- Software and hardware to interface (PC, monitor, printer, not included)
- Dual precision balanced drums, main drum width (16.38), auxilliary drum width (22")
- Dynamometer chassis, outside-to-outside drum widths: Model 250ix (56") and inside width (17.63")
- Power carriage for button operated wheelbase adjustment
- Ignition wire inductive tachometer pickup leads
- Eddy Current Load Absorption Unit
- Automatic atmospheric conditions measurement (absolute pressure, air temp, humidity)
- Starter system to spin roller (12V battery required)
- Installation, operation manuals and software included
- One year replacement parts warranty



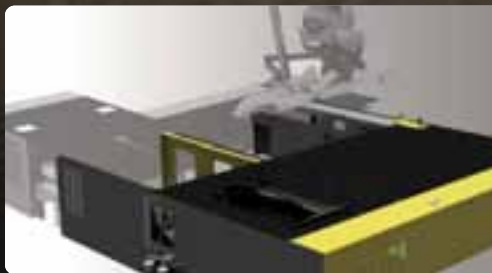
Model 250ix pit

Powersports Chassis Dyno

For details about optional accessories see page 10-11

Features & Options

| Features & Options | 200i | 200i Pit | 250i | 250i Pit | 250lx | 250lx Pit | X Upgrade |
|------------------------------------|------|----------|------|----------|-------|-----------|-----------|
| Air/Fuel Ratio Module | OPT | OPT | OPT | OPT | OPT | OPT | OPT |
| Dual Multi-Axis Cooling Fan System | OPT | OPT | OPT | OPT | OPT | OPT | OPT |
| Monitor Tray | OPT | OPT | OPT | OPT | OPT | OPT | OPT |
| Motorcycle Carriage | STD | STD | STD | STD | STD | STD | N/A |
| Air Brake/ EEC Safety | OPT | OPT | OPT | OPT | OPT | OPT | OPT |
| Extended Carriage | OPT | OPT | OPT | OPT | OPT | OPT | OPT |
| Power Clamp | OPT | OPT | OPT | OPT | OPT | OPT | OPT |
| Power Carriage | OPT | STD | OPT | STD | STD | STD | OPT |
| Fat Boy Wheel Adapter | OPT | OPT | OPT | OPT | OPT | OPT | OPT |
| Folding Ramp | OPT | N/A | OPT | N/A | OPT | N/A | OPT |
| Analog Module | OPT | OPT | OPT | OPT | OPT | OPT | OPT |
| Eddy Current Load Absorption Unit | OPT | OPT | STD | STD | STD | STD | OPT |
| Torque Cell Module | OPT | OPT | OPT | OPT | OPT | OPT | OPT |
| Dynojet Data Link Module | OPT | OPT | OPT | OPT | OPT | OPT | OPT |
| Thermocouple Amp | OPT | OPT | OPT | OPT | OPT | OPT | OPT |



Powersports Dynamometer X Upgrade

Upgrade an existing 200i or 250i to accommodate ATV's, Side-by-Sides, Go-Karts, and Trikes

Thermocouple Amp

Converts any type K thermocouple into a 0-5v based analog signal and connects right into the Analog Module. Available in a 0-500 degree F or 0-2000 degree F versions.



The Analog Module

This allows 4 additional 0-5v based sensors to be logged during dyno runs. Now you can display data such as boost, fuel pressure, and intake air temperature right along side your HP TRQ.

DJ Data-Link Module

Provides real-time data from Harley-Davidson Delphi ECM. Data is available to be viewed live in the dyno software WINPEP 7, and is recorded into the dyno run.





The Power Clamp/Carriage Option

This option allows the dyno operator to adjust the carriage length and clamp the front wheel from the control pod, while seated on the bike.

Extended Carriage Option

This option is necessary for testing long wheelbase motorcycles. Accommodates up to 102", measured from rear axle to front tire.



Integrated Air/Fuel Ratio

The addition of the Air/Fuel Ratio Monitor can be used to accurately and effectively tune fuel-injected motorcycles equipped with a Dynojet Power Commander.

Monitor Tray Option Attached to Control Pod

The Monitor Tray supports the monitor, keyboard and mouse. It is adjustable for optimum placement.



Air Brake

The Air brake can be added to the Model 200i to quickly slow the drum after the run. This is recommended when testing two-stroke motorcycles which do not have as much engine braking.

The Control Pod

This standard feature allows the operation of dyno accessories such as the cooling fans, power clamp, power carriage and air/fuel pump from the control pod.



The Folding Ramp Option

This option includes gas assist struts for one person operation.

Dual Multi-Axis Cooling Fan System

This integrated cooling fan system option has adjustable arms and can move 1,800 CFM from each fan. These fans are controlled from the control pod.



Eddy Current Load Absorption Unit

Allows load testing by close-looping on rpm, speed or percentage of load. Standard on the Model 250i & 250ix

Torque Module

The Torque Module is for measuring loaded roll-ons and real-time torque with the new WINPEP 7 software. Use the torque module while performing sweep, step and closed loop load tests to see the real-time power being produced.



Standard Dynamometer Hardware

Atmospheric Sensing Module:

The Atmospheric Sensing Module measures absolute pressure, air temperature, and relative humidity. These measurements are used by the WinPEP dynamometer software to correct power and torque measurements to standard atmospheric conditions according to an SAE, Standard, DIN, JIS, or EEC formula.

RPM Module:

The RPM Module receives and processes signals from up to 2 inductive pickups for measurement of engine RPM. Each input has an automatic gain circuit to compensate for a wide variance of ignition systems.

Dynamometer I/O Module:

The Dynamometer Input/Output Module sends and receives data from the dynamometer and the handheld pendant. The module also contains a buzzer and light which are activated when either the tire or dynamometer speed limit is approached.

CPU Module:

The CPU Module contains a 32-bit processor which acquires data from the expansion modules and communicates the data to the computer running the WinPEP software. The processor queries the expansion modules to determine which modules are connected. The CPU Module fastens to an attractive stand for placement on the computer or work bench. Each additional module then plugs conveniently into the one below it, providing expansion for future modules.

DynoWare Ex+ Standard Stack



Atmospheric Module



RPM Module



Dynamometer I/O Module



CPU Module



Installed on a 250i dynamometer

Optional Dynamometer Hardware

Air/Fuel Ratio Module

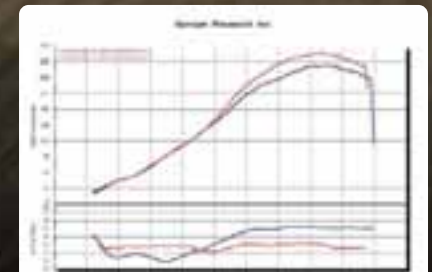
Tuning with a Dynojet dyno has never been easier! With the addition of our new air/fuel ratio module, every dyno run can show you not only horsepower and torque, but also exact air/fuel ratio. This takes the guesswork out of fueling adjustments. The air/fuel ratio graph shows a rich/lean condition at each RPM range during the dyno run.

Retrofittable to any existing Model 200 dynamometer, as well as any upgraded Model 100 or 150 dyno utilizing the new hardware upgrade and WinPEP software.



Requires installation or availability of shop air.

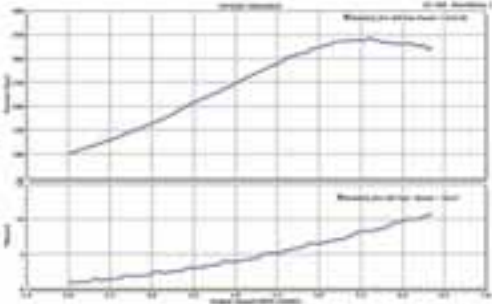
• Air/Fuel pump assembly shown here as upgrade module and installed in an i Series Dynamometer.



• Live Air/Fuel display during dyno run

Optional Dynamometer Hardware

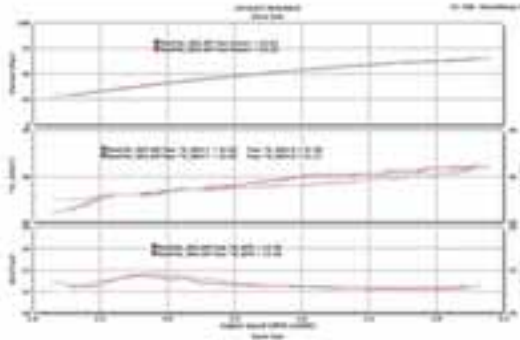
Graph Showing "Boost Pressure"



Analog Module

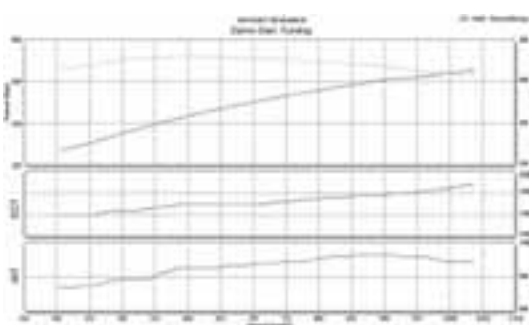
The Analog Module allows (4) additional 0-5v based sensors to be logged during dyno runs. Now you can display data such as boost, fuel pressure, and intake air temperature right along side your HP / TRQ.

WinPEP 7 has a built in sensor calibration routine that makes the set up simple. You can choose from various supported sensors, or input the data from any 0-5v sensor on the market. The module simply mounts to the top of the Dynoware EX+ System and also includes a 5v reference output.



Data-Link Module

The new DJ-DLM, provides real time data from the diagnostic port on all Harley-Davidson motorcycles equipped with a factory Delphi ECM. Data from the DJ-DLM is monitored, recorded, and reviewed using WinPEP 7 dynamometer software. You will now be able to review critical data, such as spark advance (front and rear cylinder), throttle position, head temperature, inlet air temperature, commanded AFR, and numerous other parameters right along side your dyno results. No need to guess if the bike is too hot, or perhaps if the ECM is retarding timing.



Thermocouple Amp

Enhancing the capabilities of the Analog module, the new Dynojet Thermocouple Amp Module is able to convert any Type K Thermocouple into a 0-5v based analog signal. The kit comes with the module, as well as a plug-n-play harness that connects to the Auxiliary Input Module. There are two different kits available, one that has a range of 0-500 degree F and then a 0-2000 degree F version. Set up is quick and easy, and as always, this device is fully supported in our innovative dynamometer control software, WinPEP 7.

WINPEP 7

Dynamometer Software

About WINPEP 7 Software

Dynojet's WinPEP (Windows® Performance Evaluation Program) uses a Windows® File Manager style selection window, as well as an outline selection window to access previous runs and store new ones. Runs are stored by Make, Model, and Name.

Objectives

The Software Engineers at Dynojet understand your need to attain the maximum performance from the vehicles you evaluate. For this reason, they have developed a user-friendly interface which will allow you to easily develop new dyno runs, view previously stored runs, and compare multiple runs with the click of a mouse button. Whether you are new to the benefits of dyno testing or an experienced performance leader, the repeatability and diagnostic tools of the WinPEP software will give you the professional results you are looking for.

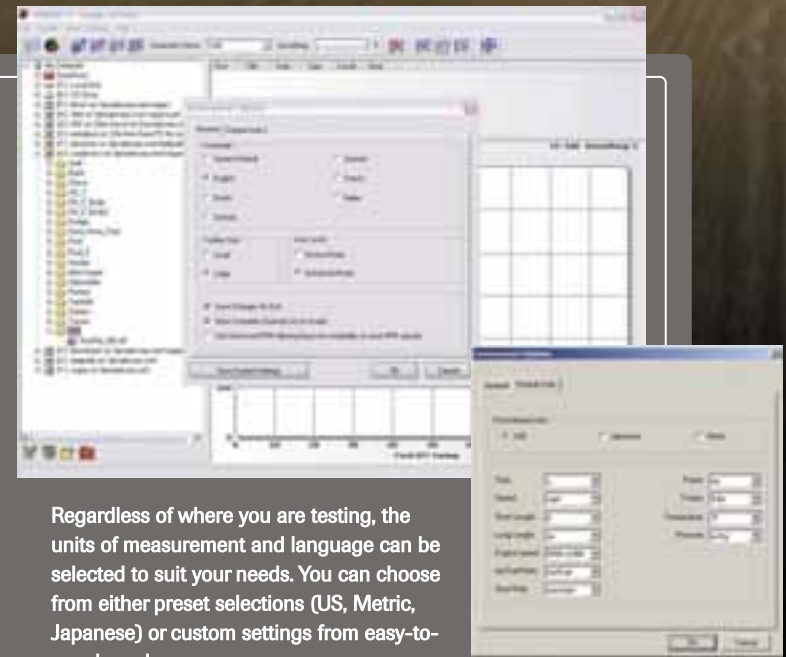
System Requirements

Dynojet recommends obtaining a computer system from a local supplier who will assemble the system from individual components. The benefit in doing this is twofold: 1) The components and software in a scratch-built system are usually of higher quality than the components used in mass-produced systems purchased from a typical computer superstore. 2.) When you obtain a computer from a local builder you also get their services should a problem arise. While problems may be few and far between, having a local source for assistance can be invaluable.

- Processor; Pentium 800 MHz (minimum)
- Hard Drive; 40 Gigabyte
- 30 Megabytes of free hard disk space is required to install WinPEP 7
- RAM; 512 Megabyte
- Monitor; 800 x 600, (SVGA), 256 color
- CD-ROM, RS232 serial port and 2 USB ports
- Software; Microsoft Windows XP/Vista
- Printer; (Must be color)



Dynojet's WINPEP 7 CD-ROM includes video tutorials to walk you through the features and functions of the software.



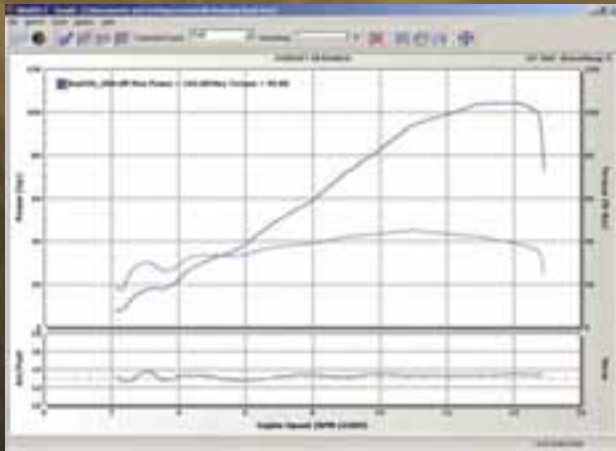
Regardless of where you are testing, the units of measurement and language can be selected to suit your needs. You can choose from either preset selections (US, Metric, Japanese) or custom settings from easy-to-use drop-down menus.



Use the "Export Graph" function to generate an image file in BMP, JPG, EMF or WMF file formats. This makes it possible for others to view run data without the need for special software.



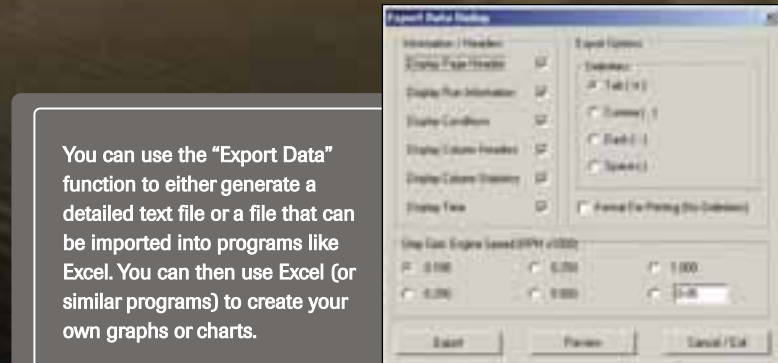
Detailed information about each run can be viewed with a simple "double-click" of a run file. Time, date, barometric pressure, humidity, etc. are all displayed.



In dual graph mode the graph screen is split horizontally. The split can be scaled to your liking. In this example Air/Fuel is scaled to 1/3rd of the screen under a power graph.



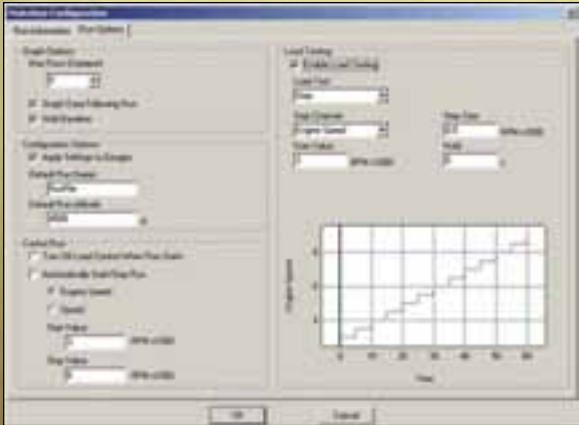
Printing options allow the user to add custom graphics such as your shop logo, which will be printed on the graphs given to your customers.



You can use the "Export Data" function to either generate a detailed text file or a file that can be imported into programs like Excel. You can then use Excel (or similar programs) to create your own graphs or charts.



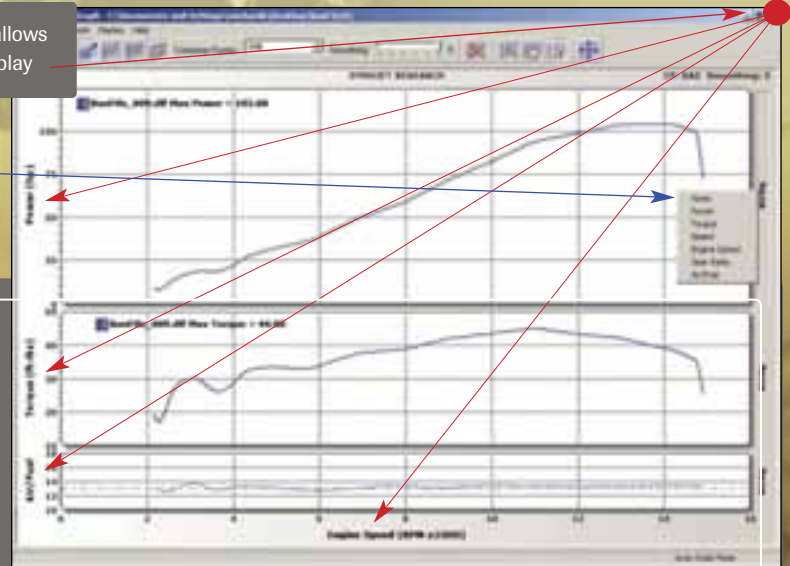
This is an example of text-based data export.



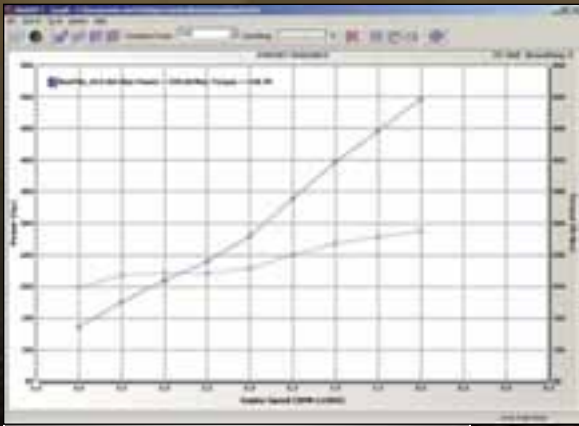
The make run configuration/run option screen allows you to select which type of load test you would like to perform. These settings show preparation for a step test, customized to suit your individual needs.
Optional Torque Cell required to perform step test

Clicking these areas allows you to choose the display

Then choose from the pop-up list.



WINPEP 7 supports up to a three graph split. Clicking the Axis tabs will display a pop-up list of choices. You can select the view type from this list.



This graph is an example of a "step" test. This test allows you to define specific RPM points. During this test, each of these points are held and torque and horsepower readings are taken. These points are depicted by the square boxes shown in the graph.

This is an example of the "load control" and "load testing" systems make run screen. Using the optional Torque Module, "real-time" torque can be displayed.

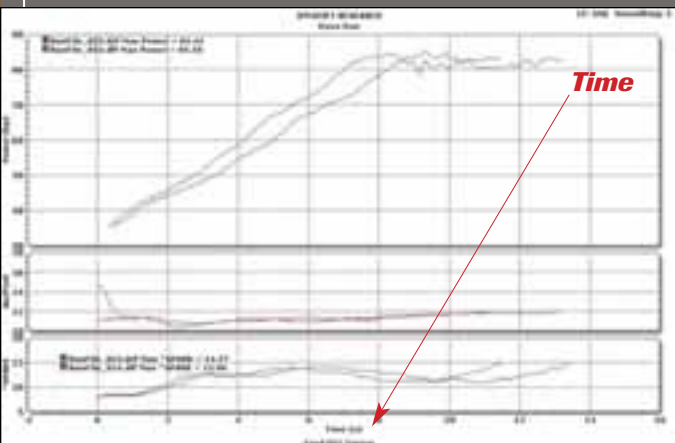
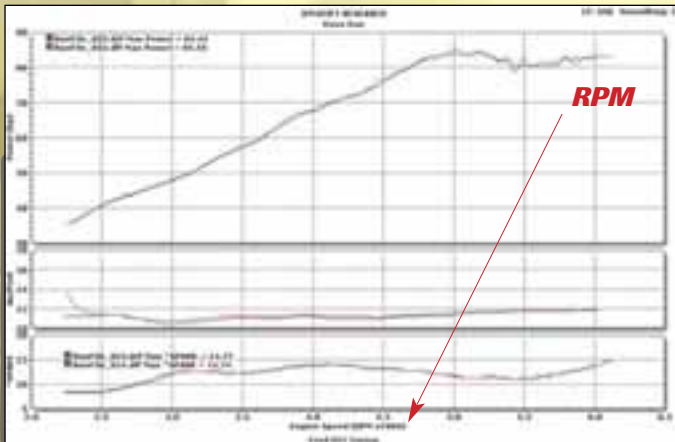


The "analog input" screen allows you to display data such as boost, fuel pressure, and intake air temperature right along side your HP / TRQ.
Optional Analog Input module required



WINPEP 7

Dynamometer Software

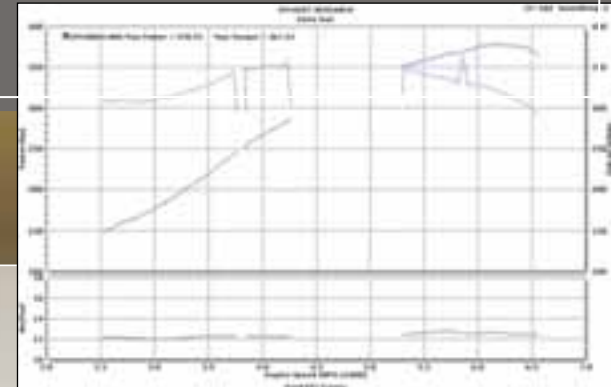


Notice the results when comparing results from an inertia dyno run with a loaded sweep test. The time to perform that test is dramatically different, but when viewed versus RPM, the results are the same in this case. If the vehicle maintains a level of consistency, you can count on the Dynojet load control system to yield consistent, repeatable results (notice the spark and AFR were identical on the loaded vs. inertia only run).

RPM Filter

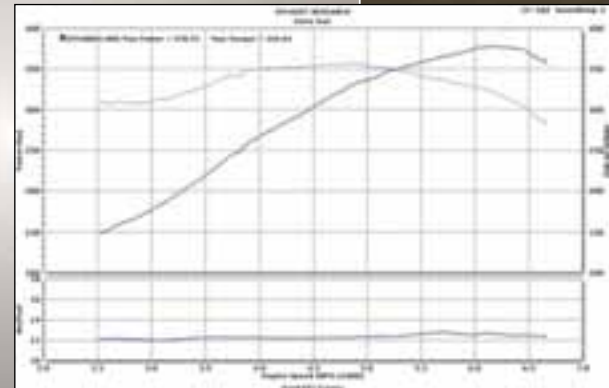
Using our Winpep software has just become easier! Engine RPM signals recorded by our inductive RPM cables can occasionally be very unsteady and difficult to graph correctly, especially with aftermarket ignition systems. This is due to excessive RF interference noise.

Dynojet now offers a solution for this! Introducing the RPM Filter:



Without filter

Notice the missing sections of the graph caused by a poor RPM signal.



With filter

As you can see by, enabling the RPM Filter in Winpep 7 fills these missing sections to provide a clear and easy to interpret graph! The filter is restricted to only fill small sections of unusable engine RPM.

Winpep 7 is available to all Dynojet Dynamometer owners. Current Winpep 7 users can download the update from our website, www.dynojet.com and dynamometer owners using Winpep 6 can also upgrade by purchasing Winpep 7. Please contact your Dynojet Dynamometer Sales Representative for details.



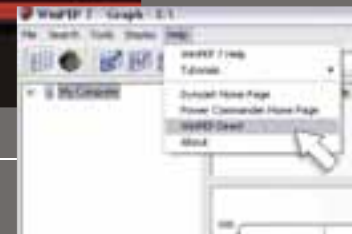
Online Parts Ordering

You can also visit the Dynojet Web site to order a variety of replacement parts: axle straps, RPM inductives, O2 sensors and more. Follow the links or type in: www.dynojet.com/replacement_parts.php



Winpep.com

A user support web site is accessible by selecting "WinPEP Direct" under the "Help" menu in WinPEP 7.



Technical Support

To provide our customers with industry leading support, 24 hours a day, 7 days a week, we have created www.winpep.com, a website that is available only to registered Dynojet Dynamometer owners. Once registered, you can download available Software Updates, read through FAQ's & Tech Tips, find RPM pickup locations and much more. The best thing about www.winpep.com is that our dynamometer owners contribute to the website. This guarantees that the information gained from the site applies to the "real world". Don't see what you're looking for? Email us and we'll get it for you and put it up on the site.

Contact Info

Email: **US / dynosales@dynojet.com**
International / intdynosales@dynojet.com
Phone: **Toll Free / 800-992-3525**
Local / 702-399-1423
Fax: **US / 702-399-6385**



Web Listing

The Dynojet Web site has a listing of all Dynojet dyno owners around the world. Find the closest shop at www.dynojet.com



Dynojet

Training Course



Current Dynojet dyno owners are also invited to attend this class to get up to date dyno information and techniques. Space permitting, contact your Dynojet representative for details

On-Site Training Also Available!

On-site training at your facility is available for an additional fee. Training includes a factory trained professional educating your staff on your dyno.

This is normally a two day set-up and training course at your facility. Please ask your Dynojet sales representative for more information.



Dynojet provides a "one day" class for one technician with every Dynamometer purchase.

Techniques for maximizing the profit potential of your Dynojet dynamometer will be discussed

Classes held monthly

Class hours will be 9:00AM to 5:00PM with 12:00 to 1:00 for lunch.

The Basic course covers Dynamometer operations including;

- * Model 200 & 200i operation
- * Model 250 & 250i operation
- Model 250ix operation
- * Dynamometer Safety, and room set-up
- * Dynamometer check and service
- * Vehicle Inspection, loading and unloading on the Dynamometer
- * WINPEP 7 software/computer usage
- * Basic Dynamometer runs including Roll-ons, All-gears, and Fast acceleration.

For further information about the Dynojet Dynamometer operations course, please contact the Dynojet Sales Representative at;

Phone: 800-992-3525

Email: dynosales@dynojet.com



The Era of Fuel Injection has arrived. Year after year, more bikes will come equipped with fuel injection systems. Dynojet has invested in the future and will offer the revolutionary Power Commander for many bikes.

Although the Power Commander is supplied with maps for many popular applications, there is a need for regional tuning centers, which can optimize the fuel and ignition curves for local customers as well as develop new maps for given combinations.

There are many advantages to becoming a "Dynojet Approved Power Commander Tuning Center," which include:

- A new profit center, which will draw new customers to your store
- Special pricing on all Power Commander purchases
- Shop listing inside every Power Commander package
- Shop listing and full page on www.powercommander.com

CALL A DYNOJET REPRESENTATIVE TODAY

Please note that the number and location of Dynojet Approved Power Commander Tuning Centers is at the sole discretion of Dynojet Research Inc.

How to become a "Dynojet Approved Power Commander Tuning Center"

- [1] Call a Dynojet sales representative at 800-992-3525.
- [2] Purchase or upgrade to a Dynojet Model 250, 250i or 250ix Load-Control Dynamometer. All Model 150, 200 and 200i Dynamometers can be upgraded.
- [3] Purchase the new Dynojet real-time Air/Fuel Ratio Module. This is probably the best Dyno accessory ever produced and can be used with any model Dynojet Dynamometer. All Model 150 Dynamometers can be upgraded along with the DynoWare EX+ upgrade.
- [4] Submit a Tuning Center application. A technician must complete and pass a three day Fuel Injection and Power Commander School course at Dynojet in Las Vegas.
- [5] Sign a Power Commander Tuning Center agreement with Dynojet Research.



Power Commander Control Center

The easy to use Power Commander Control Center Software is compatible with Windows® XP/Vista computers. The Advanced Features include Cylinder Trim Fuel Offset, Throttle Position Sensor Calibration and a Map Compare Feature.

Tuning Link

Power Commander Software Center

Tuning Link

The Dynojet Fuel Injection Tuning Link is an *innovative* piece of software that allows the *automatic* fuel curve optimization of a Power Commander equipped motorcycle. The Tuning Link software interfaces the Power Commander with a Model 250i Load Control Dynamometer.

The Tuning Link software controls *both* the Dynamometer and the Power Commander at the *same time*. The dyno operator simply follows the instructions on the screen.

By utilizing the Dynojet "Real Time" air/fuel ratio monitoring equipment and latest "load control" Dynamometer technology, the Tuning Link monitors the current air/fuel ratio at over one hundred and forty different points. At the same time, the Tuning Link automatically calculates the correct fuel adjustment to achieve the user desired air/fuel ratio. Once calculated, the Tuning Link uploads these new fuel values to the Power Commander and saves a copy of the file.

The Tuning Link has the ability to map fuel curves in both "static" and "dynamic" modes. This assures that the generated fuel curves are correct for both steady state cruising as well as during aggressive on/off throttle movements.



The Air/Fuel ratio can be set for Cruising and Power ranges. This technology allows the Dyno Operator to accurately "optimize" the bike in a very short time, regardless of the bike's modifications.

Tuning Link is available only to Dynojet Approved Power Commander Tuning Centers.



Operator simply follows instructions on screen.



This screen shows the software in action during a Dynamic 100% throttle roll-on test. Dynamic part throttle roll-ons can be accomplished with complete accuracy by utilizing the Dynojet Throttle stop.

Maximum Horsepower 750HP (373 KW)
Maximum Speed 200 MPH (322KPH)
Maximum Length 84 Inches (213cm)
 (Front of Front Wheel to
 Center of Rear Wheel)

Dimensions:
Drum Diameter 18 Inches (45.72cm)
 per wheel
Drum Width 16.38 Inches (42cm)
Drum Weight 500 pounds (227 Kg)
Drum Concentricity +/-0.001 Inch
 (+/-0.025mm)

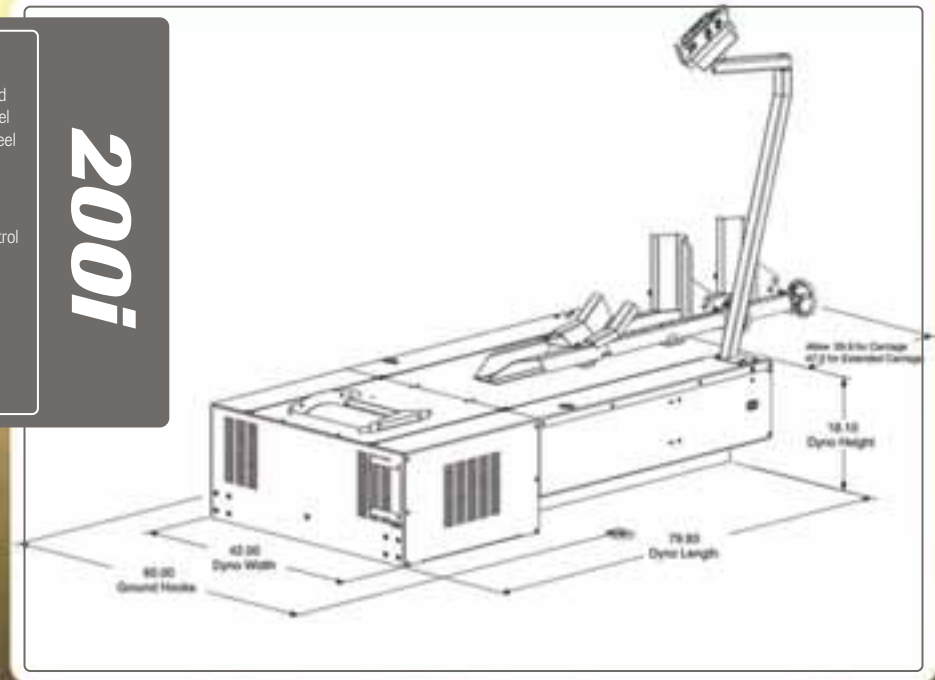
Weight:
Dynamometer 1850 pounds (839 Kg)
Crated Dynamometer 1950 pounds (885 Kg)

Material:
Drum A 106 Steel
Shaft 2 3/16 inch 1144 turned
 ground & polished steel
Frame 10 Gauge Cold Roll Steel

General:
Power Requirements 240v 30 amp
 single phase circuit
Remote Switches Remote Software Control

Hardware:
Hardware Timing Accuracy +/- 1 microsecond
Drum Speed Accuracy +/- 1/100 th MPH
RPM Accuracy +/- 1/10 th RPM

200i



Maximum Horsepower 750HP (373 KW)
Maximum Speed 200 MPH (322KPH)
Maximum Length 84 Inches (213cm)
 (Front of Front Wheel to
 Center of Rear Wheel)

Dimensions:
Drum Diameter 18 Inches (45.72cm)
 per wheel
Drum Width 16.38 Inches (42cm)
Drum Weight 500 pounds (227 Kg)
Drum Concentricity +/-0.001 Inch
 (+/-0.025mm)

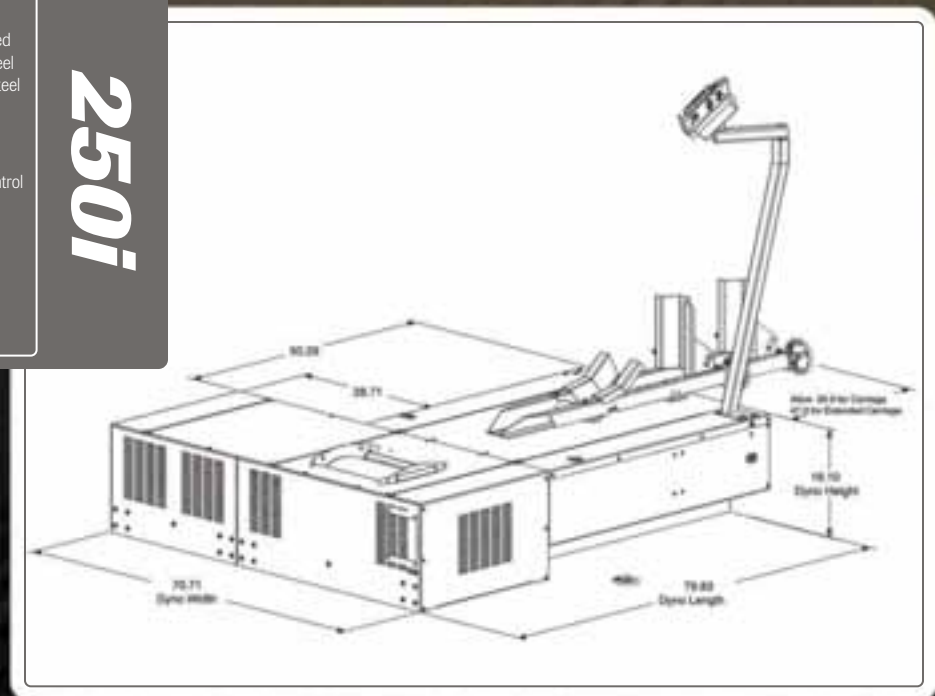
Weight:
Dynamometer 2750 pounds (1247 Kg)
Crated Dynamometer 2850 pounds (1293 Kg)

Material:
Drum A 106 Steel
Shaft 2 3/16 inch 1144 turned
 ground & polished steel
Frame 10 Gauge Cold Roll Steel

General:
Power Requirements 240v 30 amp
 single phase circuit
Remote Switches Remote Software Control

Hardware:
Hardware Timing Accuracy +/- 1 microsecond
Drum Speed Accuracy +/- 1/100 th MPH
RPM Accuracy +/- 1/10 th RPM

250i



Dynamometer

Specifications

Maximum Horsepower 750HP (373 KW)
 Maximum Speed 200 MPH (322KPH)
 Maximum Length 84 Inches (213cm)
 (Front of Front Wheel to
 Center of Rear Wheel)

Dimensions:

Drum Diameter 18 Inches (45.72cm)
 per wheel
 Drum Width 16.38 Inches (42cm)
 AUX Drum Width 20 Inches (50.80)cm
 Drum Weight 500 pounds (227 Kg)
 AUX Drum Weight 175 pounds (80 Kg)
 Drum Concentricity +/-0.001 Inch
 (+/-0.025mm)

Weight:

Dynamometer 3550 pounds (1609 Kg)
 Crated Dynamometer 3650 pounds (1655 Kg)

Material:

Drum A 106 Steel
 Shaft 2 3/16 inch 1144 turned
 ground & polished steel
 Frame 10 Gauge Cold Roll Steel

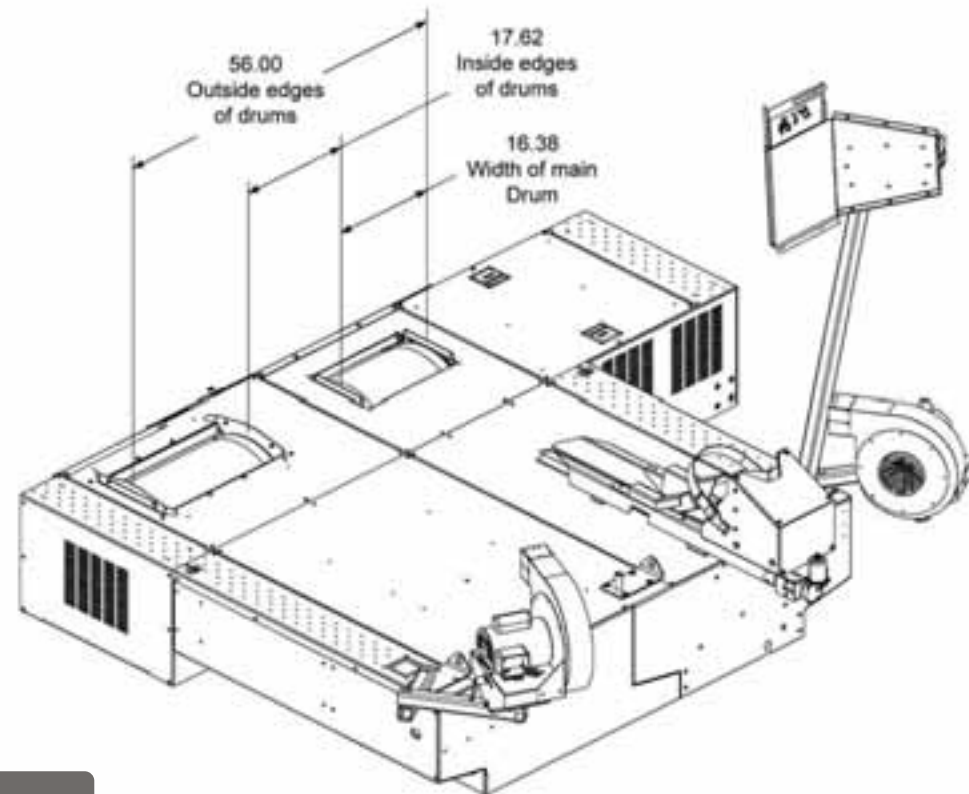
General:

Power Requirements 240v 30 amp
 single phase circuit
 Remote Switches Remote Software Control

Hardware:

Hardware Timing Accuracy +/- 1 microsecond
 Drum Speed Accuracy +/- 1/100 th MPH
 RPM Accuracy +/- 1/10 th RPM

250ix



Contact Info

Email: US / dynosales@dynojet.com
 International / intdynosales@dynojet.com

Phone: Toll Free / 800-992-3525
 Local / 702-399-1423

Fax: US / International / 702-399-6385



Dynojet Research

2191 Mendenhall Drive North Las Vegas, Nevada 89081

Tel: 800-992-3525

Local: 702-399-1423

Fax: 702-399-6385

Email: dynosales@dynojet.com

International Email: intdynosales@dynojet.com

www.dynojet.com

Dynojet Research, E.M.E.A.

***Kromstraat 88- E
5345 AD Oss, The Netherlands
Tel: +31 (0) 412 403770
Fax: +31 (0) 412 403636***

Dynojet Germany

***Neustr 44
47809 Krefeld, Germany
Tel: +49 (0) 2151535846
Fax: +49 (0) 2151535847***