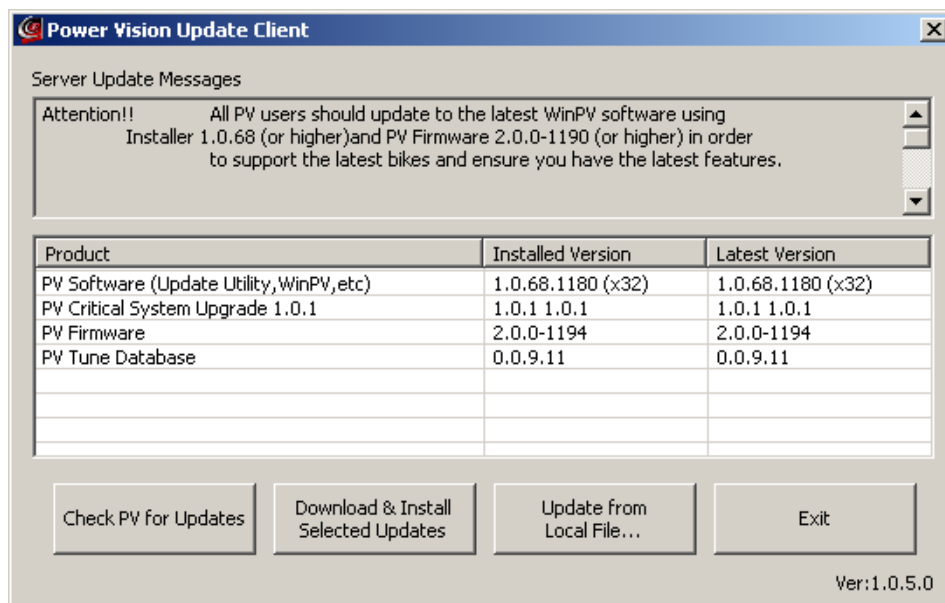


Power Vision Dual Tune License Program for Retail Customers

Overview: The Power Vision Dual Tune License Program is a provision that will allow a customer to tune multiple (2) H-D motorcycles with a single Power Vision. Once the Dual License is applied to the Power Vision, it will allow the Power Vision to Tune the second H-D Motorcycle.

***** Update! Update! Update! *****

The Power Vision and your computer both need to have the latest updates before beginning the Dual Tune License process. Plug the Power Vision into the computer you are going to use for this process, then run the PV Update Client (*Start, Programs or All Programs, Power Vision, PV Update*). Check **each** item on the list, the **Installed Version** needs to match the **Latest Version**. If any item does not match, click on that line, and then click on **Download and Install Selected Updates** button below. This will update that line item. Once all of the line items are up to date, you are ready to proceed.



Retrieving ECM information

- Information must be transferred from the Power Vision and saved before a Dual Tune License can be issued.
 1. Plug in the USB cable into the Power Vision.
 2. After the Power Vision boots up and says "PC Link Mode Active".



3. Launch the WinPV Software.
4. On the menu bar, go to "Power Vision", and choose "Diagnostic Test functions > Get ECM Data from PV".
5. Highlight "DiagnosticsHistory.txt" and click Get. Save it to the default directory, C:\My Documents\Power Vision\ Diagnostics.
6. Open a new email and attach the file acquired from the steps above. That file once again is, "DiagnosticsHistory.txt".
7. Send an email to PVtech@dynojet.com, with a subject of Dual Tune License, along with your full name, address, phone number, and valid email address. We'll contact you when the Dual License file is ready.

Applying License to the Power Vision

Overview: Once you've received your Dual License, please follow these steps.

Note: The Dual License will only work for the Power Vision it was generated for!

1. You will be sent an email with an attached file named something like "2nd Lock Slot Enable...". Open this file on a computer and find the PIN number. You will need this number in the next step.
2. With the Power Vision plugged into the bike and powered up, just go to "Settings > Enter Code". Enter the PIN number from the above step, and press Save.
3. The license has now been applied to the Power Vision and is ready to lock to a second bike.

Note: When you plug in the Power Vision to the second bike and flash a tune to it, a new original backup will save to the Power Vision. You will now have the original backup from the first bike, and the original backup from the second bike saved to the Power Vision. WinPV will prompt you to save the second original backup when you connect, choose "Yes" to ensure you save the new file.