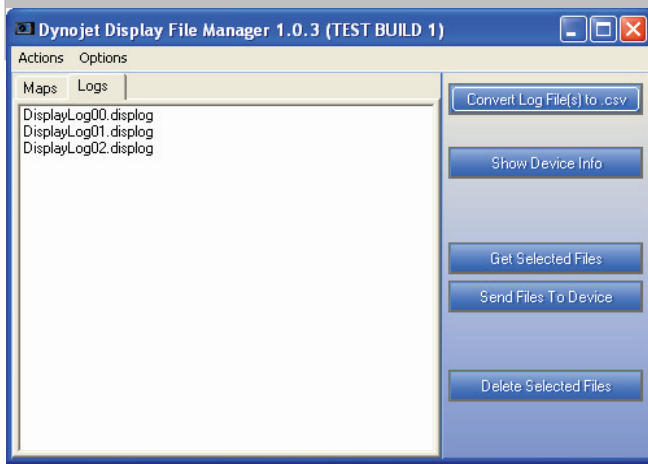




Display File Manager



The Display File Manager software allows you to move log files between the Display and your computer. The main interface contains a set of tabs, Maps and Logs. These tabs display the files that exist on the memory card in the corresponding directory.

The main interface has five buttons which are also accessible from the Actions menu. The main interface buttons and menu items are described below.

INSTALLING THE DISPLAY FILE MANAGER SOFTWARE

- 1 Insert the CD, included with the Display, in your CD-ROM drive. The launch program will run automatically.
Note: This software may also be downloaded at www.powercomander.com.
- 2 Click **LCD File Manager Software**.
- 3 Follow the on-screen instructions.
- 4 Connect the Display to your computer using the USB cable.

USING THE DISPLAY FILE MANAGER SOFTWARE

Data logging files have a .displog file extension. This is raw data. The Display File Manager converts these files into a format viewable in Excel with a .csv file extension.

Click **Options** ► **Log File Export Options** to set up the time interval between data samples for the .csv files created from data logging files. The default 1.0 will put one second between each line in the .csv file. Choose a value from the drop down list or type any valid real number directly into the field. By default, the software will automatically create .csv files for any logs pulled from the device. This can be disabled by deselecting Auto Convert Log Files.

Click **Actions** ► **Update Firmware** to update the Display firmware. Update Firmware will only be enabled when the Display is in bootloader mode.

Note: Updating the firmware is not necessary unless Dynojet has prompted you to do so.

- To enter bootloader you must have the three buttons on the Display depressed while you connect the USB to the Display. Once in bootloader mode, a blue screen with some basic device information is displayed.
- Click the **Actions** drop down menu in the Display File Manager software. Click **Update Firmware**.
- Find the desired firmware file (.djf) on your computer. The software will prepare the Display for the new firmware to send the file to it. A progress indicator will be displayed during this process. After a successful reprogram the software will start the new Display firmware automatically. Resume normal software operation.