

[POWER] [COMMANDER III]

CERTIFIED **USB**

New Accelerator Pump feature for all Power Commander III USB units Installation Instructions

Dynojet is pleased to announce a new "Accelerator Pump" feature for all USB Power Commanders. This is a FREE upgrade that can be installed into any USB Power Commander.

Step 1 - Download the Accelerator Pump utility file from www.powercommander.com.

Step 2 - Connect to the Power Commander and run the utility

Step 3 - Experiment with the settings to match your riding style.

You can adjust:

- A) The amount of fuel to add
- B) The number of engine revolutions during which fuel is added
- C) The sensitivity of throttle movement under which the accelerator pump is activated



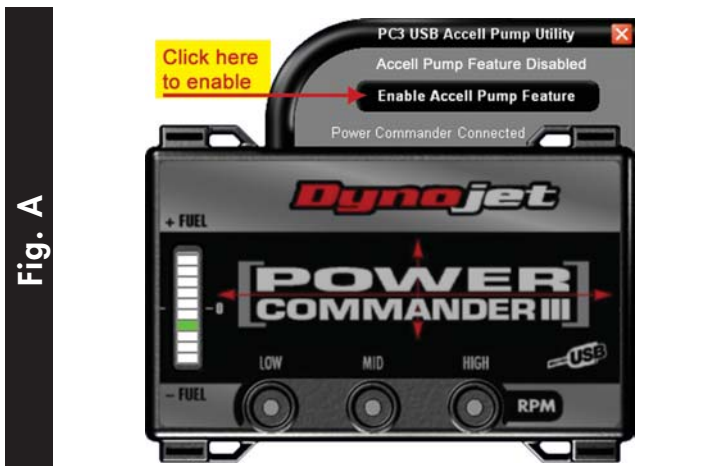


Fig. A

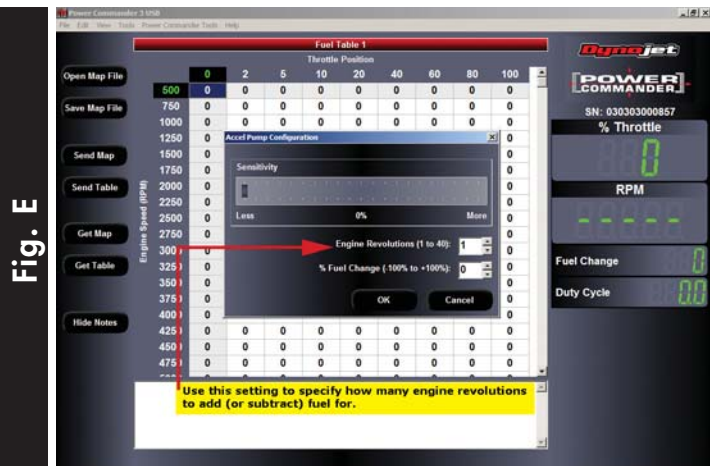


Fig. E

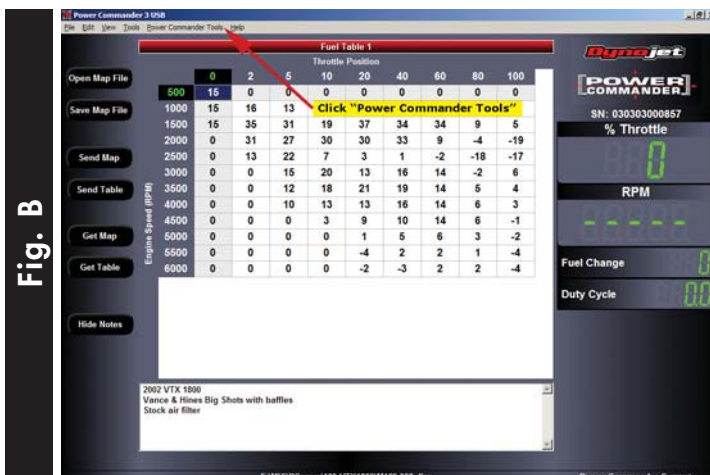


Fig. B

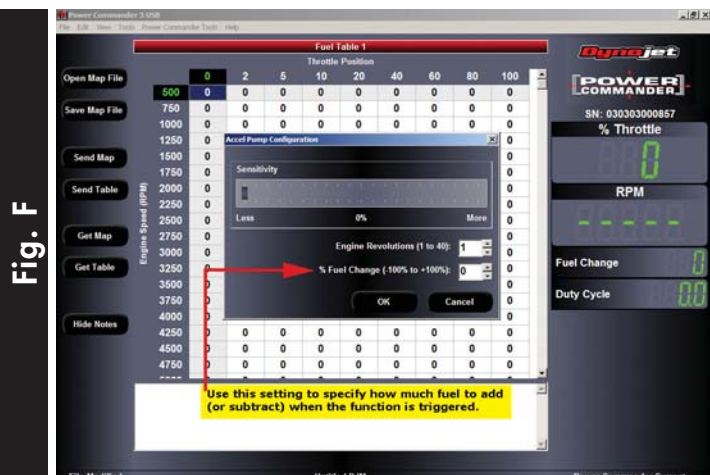


Fig. F

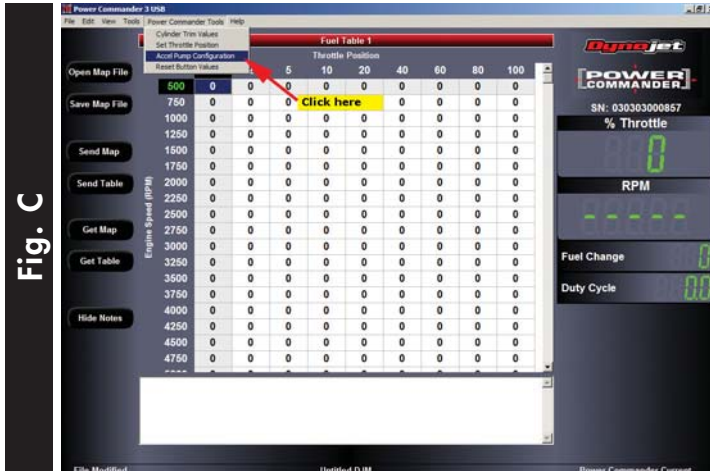


Fig. C

Frequently Asked Questions

Q. I have a Power Commander III. Can I use this utility?

A. No, the Power Commander II and III hardware cannot support this feature.

Q. What are the best settings for my bike?

A. There are no magical settings. Different riders on the same bike would choose different settings based on their riding style.

Some Racers have selected the following:

- 75% Sensitivity
- 20% Fuel Increase
- 15 Engine Revolutions

Some Street Riders have selected:

- 90% Sensitivity
- 15% Fuel Increase
- 20 Engine Revolutions

To use this feature, you will have to experiment with different settings to suit your riding style.



Fig. D