

REV		DESCRIPTION	DATE	APPROVED
12592	01	RELEASED	03/21/17	GLE

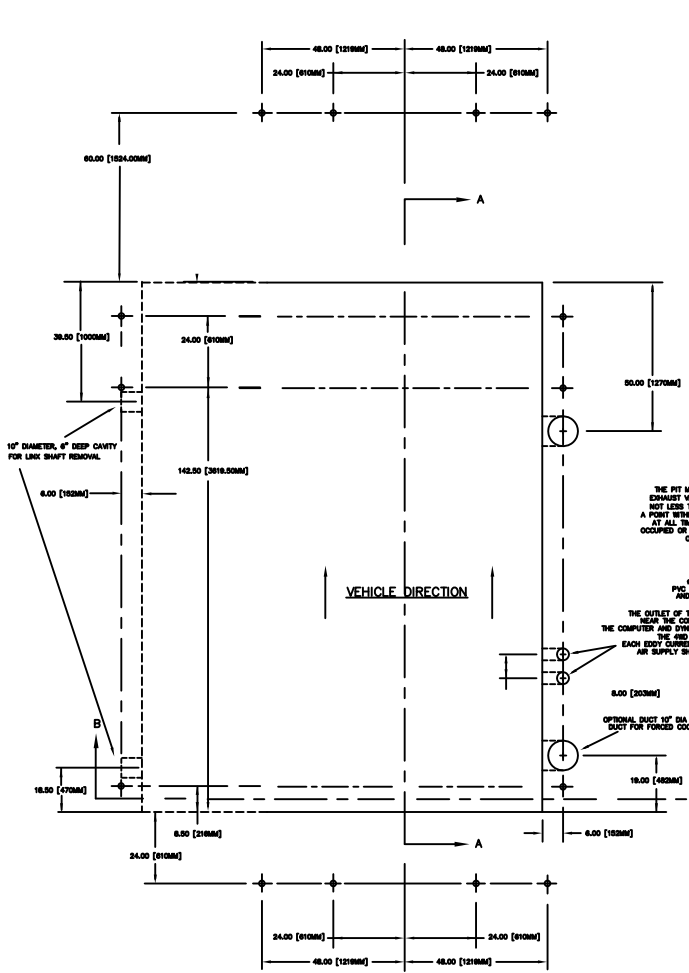
STANDARD WHEELBASE WITH LINX AND WITHOUT EDDY CURRENT BRAKE

NOTES:

1. ALL DIMENSIONS ARE NOMINAL TO FACE OF MASONRY OR TO FACE OF METAL STUD.
2. ALL WORK SHALL BE IN ACCORDANCE WITH LOCAL AND STATE AND OR ANY OTHER GOVERNING CODE REQUIREMENTS.
3. VERIFY ALL UNDERGROUND UTILITIES BEFORE EXCAVATION.

STRUCTURAL NOTES

1. CODES AND STANDARDS
THE PROJECT WAS DESIGNED IN ACCORDANCE WITH THE STANDARD BUILDING CODE 1991 EDITION.
2. FOUNDATION
ALL SITE PREPARATION AND EXCAVATION WORK IS TO BE PERFORMED IN STRICT ACCORDANCE WITH THE RECOMMENDATIONS ON SOILS AND FOUNDATIONS INVESTIGATION PREPARED BY AN APPROVED TESTING LABORATORY PRIOR TO FOUNDATION WORK.
BOTTOM OF FOOTINGS TO BEAR ON SOIL CAPABLE OF SAFELY SUPPORTING 2500 PSF.
SOILS SUPPORTING ALL FOOTINGS MUST BE INSPECTED AND APPROVED BY A REGISTERED SOIL ENGINEER BEFORE COMMENCING WORK. APPROVAL IN WRITING MUST INDICATE THE SOIL IS ADEQUATE TO SAFELY SUSTAIN SPECIFIED SOIL BEARING PRESSURE.
3. CONCRETE
ALL CONCRETE SHALL BE READY MIX, HAVE A MINIMUM COMPRESSIVE STRENGTH OF 2500 PSI @ 28 DAYS AND HAVE A MINIMUM OF 5% OF CEMENT PER CUBIC YARD.
ALL THE CONCRETE WORK SHALL COMPLY WITH THE REQUIREMENTS OF THE ACI BUILDING CODE (ACI 308/LATEST EDITION), THE ACI DETAILING MANUAL (ACI 305/LATEST EDITION), AND THE SPECIFICATIONS FOR STRUCTURAL CONCRETE FOR BUILDINGS (ACI 301/LATEST EDITION)
ALL REINFORCING STEEL SHALL BE MANUFACTURED FROM HIGH STRENGTH INLET STEEL CONFORMING TO ASTM DESIGNATION A 615 GRADE 80, SPICES TO LAP MIN 25". CONCRETE COVER MIN. 3" AGAINST EARTH OR SLAB
THE PIT WALLS CAN BE CONSTRUCTED FROM MASONRY BRICK AS ALWAYS CONSULT YOUR CONTRACTOR TO ENSURE THE WALLS WILL STILL MEET THE CODES AND STRUCTURAL STANDARDS
4. MASONRY
MASONRY UNITS SHALL BE ASTM C 90 GRADE N. ALL MORTAR SHALL BE TYPE S (OR TYPE M) IN ACCORDANCE WITH ASTM SPECIFICATION C270.
PROVIDE HOT DIPPED GALVANIZED TRUSS TYPE HORIZONTAL REINFORCEMENT (MIN 9 GA.) AT 16" ON CENTER VERTICAL IN ALL MASONRY WALLS. PROVIDE ONE TAB SLOT ANCHORS AT CONCRETE COLUMNS.



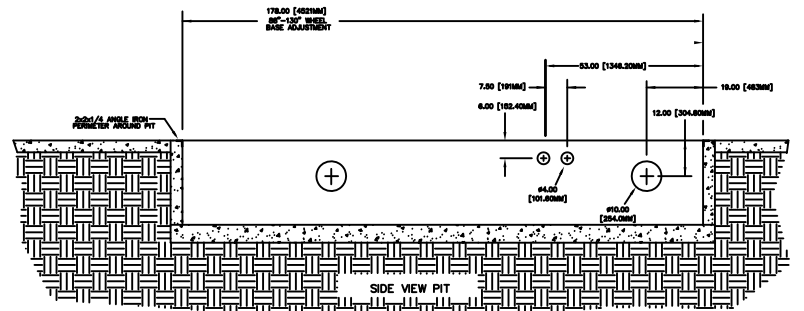
VEHICLES SHOULD BE LOADED FROM THIS END.

THE PIT MUST BE PROVIDED WITH EXHAUST VENTILATION AT A RATE OF NOT LESS THAN 250cfm TAKEN FROM A POINT WITHIN 2' (500MM) OF THE FLOOR AT ALL TIMES THAT THE BUILDING IS OCCUPIED OR WHEN VEHICLES ARE PARKED OVER THIS AREA.

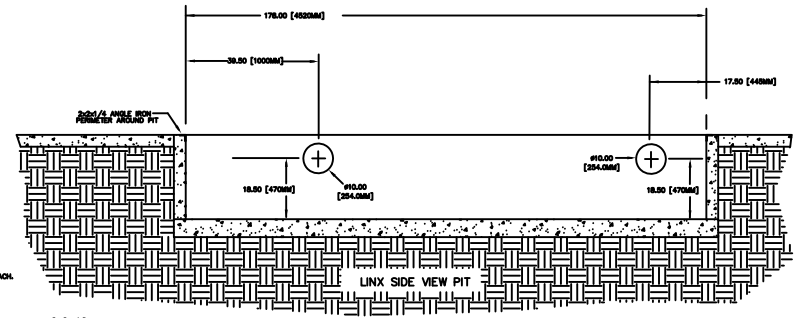
6.00 [152.40MM] PVC PIPES FOR AIR SUPPLY AND ELECTRICAL CABLES

THE OUTLET OF THESE CABLES SHOULD BE PLACED NEAR THE COMPUTER AND DYNO ELECTRONICS REQUIRE (1) 110V OUTLET EACH. THE #10 REQUIRE (1) 110V OUTLET. EACH EDDY CURRENT BRAKE REQUIRES A 200V-30A OUTLET. AIR SUPPLY SHOULD BE 120V 1/4 DRYER.

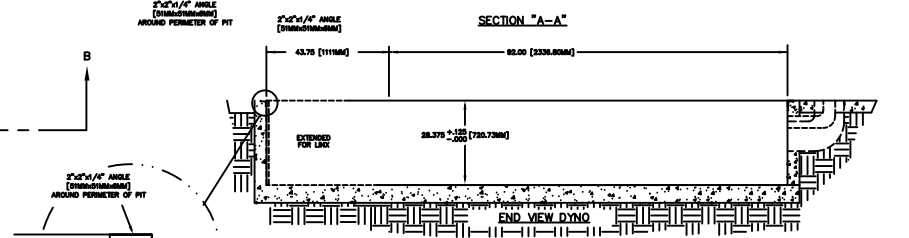
OPTIONAL DUCT 10" DIA. OR NEET DUCT FOR FORCED COOLING.



SECTION "A-A"



SECTION "A-A"



SECTION "B-B"

MATERIAL:	N/A	DYNOJET RESEARCH 200 ARDEN DRIVE, BELGRADE MT 59714			
FINISH:	N/A				
UNLESS OTHERWISE SPECIFIED:	TOLERANCES:	424-2 W/STD WB AND LINX PIT DIMENSIONS			
DECIMAL	± 0.10			FRACTIONAL	± 1/16
XXX ± 0.060				ANGULAR	± 5°
DO NOT SCALE THIS DRAWING					
CREATED:	CTS 01/13/06	SIZE	PART NO.		
LAST UPDATE:	GLE 04/05/17	D	98219120		
DESIGNED:	KAN	SCALE:	1:20		
APPROVED:		RELEASE DATE:			

ALL IDEAS, DESIGNS, ARRANGEMENTS AND PLANS INDICATED OR REPRESENTED BY THIS DRAWING ARE OWNED BY DYNOJET RESEARCH, INC. AND WERE CREATED, EVOLVED AND DEVELOPED FOR USE ON AND IN CONNECTION WITH THE SPECIFIED PROJECT. NONE OF SUCH IDEAS, DESIGNS, ARRANGEMENTS OR PLANS SHALL BE USED BY OR DISCLOSED TO ANY PERSON, FIRM OR CORPORATION FOR ANY PURPOSE WHATSOEVER WITHOUT THE WRITTEN PERMISSION OF DYNOJET RESEARCH, INC.

REV	01
SHEET	1 OF 5

REVISIONS				
ECR#	REV	DESCRIPTION	DATE	APPROVED
12592	01	RELEASED	03/21/17	GLE

NOTES:

- ALL DIMENSIONS ARE NOMINAL TO FACE OF MASONRY OR TO FACE OF METAL STUD.
- ALL WORK SHALL BE IN ACCORDANCE WITH LOCAL AND STATE AND OR ANY OTHER GOVERNING CODE REQUIREMENTS.
- VERIFY ALL UNDERGROUND UTILITIES BEFORE EXCAVATION.

STRUCTURAL NOTES

- CODES AND STANDARDS**

THE PROJECT WAS DESIGNED IN ACCORDANCE WITH THE STANDARD BUILDING CODE 1991 EDITION.
- FOUNDATION**

ALL SITE PREPARATION AND EXCAVATION WORK IS TO BE PERFORMED IN STRICT ACCORDANCE WITH THE RECOMMENDATIONS ON SOILS AND FOUNDATIONS INVESTIGATION PREPARED BY AN APPROVED TESTING LABORATORY PRIOR TO FOUNDATION WORK.

BOTTOM OF FOOTINGS TO BEAR ON SOIL CAPABLE OF SAFELY SUPPORTING 2500 PSF.

SOILS SUPPORTING ALL FOOTINGS MUST BE INSPECTED AND APPROVED BY A REGISTERED SOILS ENGINEER BEFORE COMMENCING WORK. APPROVAL IN WRITING MUST INDICATE THE SOIL IS ADEQUATE TO SAFELY SUSTAIN SPECIFIED SOIL BEARING PRESSURE.
- CONCRETE**

ALL CONCRETE SHALL BE READY MIX, HAVE A MINIMUM COMPRESSIVE STRENGTH OF 2800 PSI @ 28 DAYS AND HAVE A MINIMUM OF 517 LBS. OF CEMENT PER CUBIC YARD.

ALL THE CONCRETE WORK SHALL COMPLY WITH THE REQUIREMENTS OF THE ACI BUILDING CODE (ACI 318/LATEST EDITION), THE ACI DETAILING MANUAL (ACI 315/LATEST EDITION), AND THE SPECIFICATIONS FOR STRUCTURAL CONCRETE FOR BUILDINGS (ACI 301/LATEST EDITION)

ALL REINFORCING STEEL SHALL BE MANUFACTURED FROM HIGH STRENGTH BILLET STEEL CONFORMING TO ASTM DESIGNATION A 615 GRADE 60. SPLICES TO LAP MIN 25". CONCRETE COVER MIN. 3" AGAINST EARTH @ SLAB

THE PIT WALLS CAN BE CONSTRUCTED FROM MASONRY BRICK AS ALWAYS CONSULT YOUR CONTRACTOR TO ENSURE THE WALLS WILL STILL MEET THE CODES AND STRUCTURAL STANDARDS
- MASONRY**

MASONRY UNITS SHALL BE ASTM C 90 GRADE N. ALL MORTAR SHALL BE TYPE S (OR TYPE M) IN ACCORDANCE WITH ASTM SPECIFICATION C270.

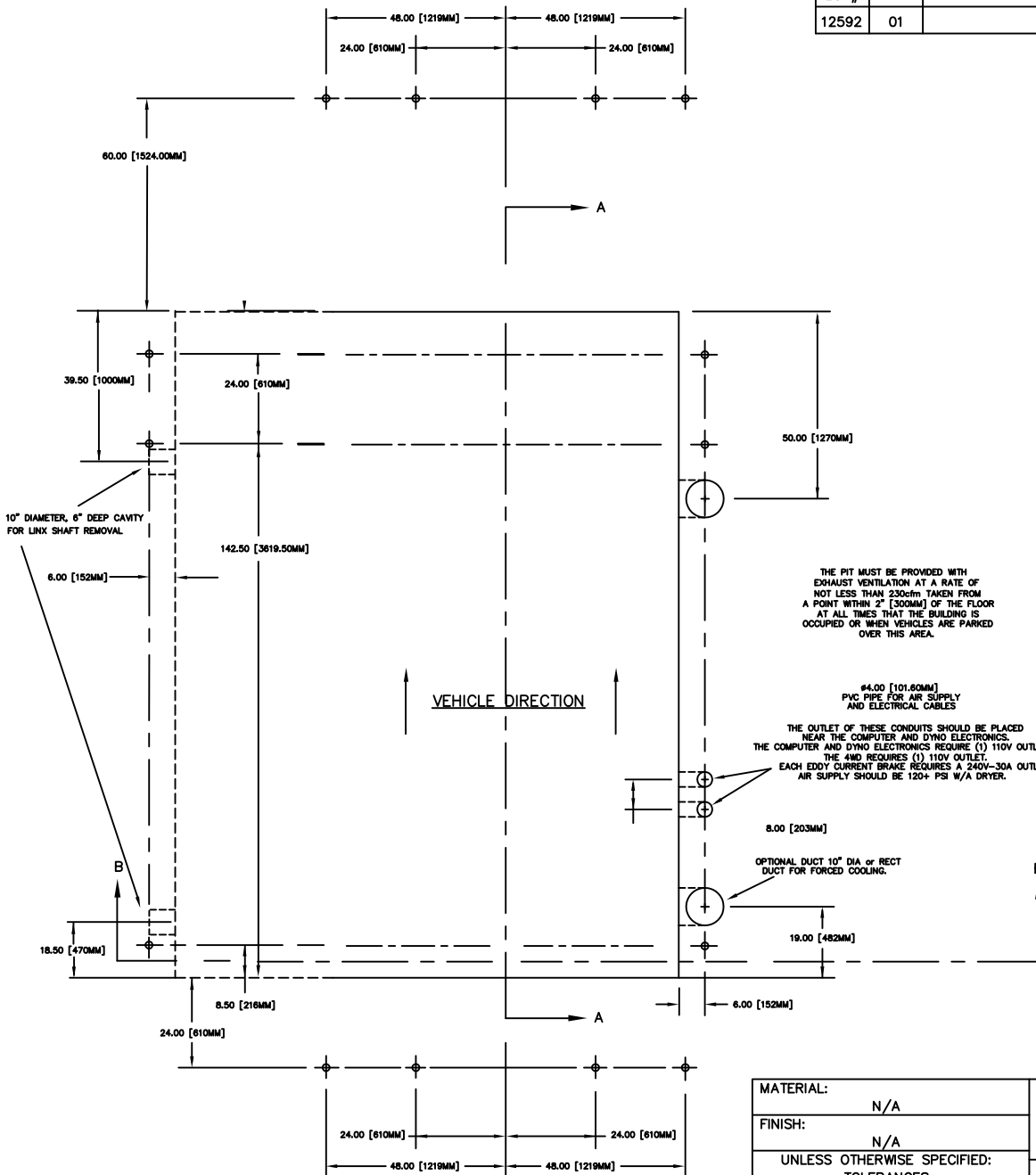
PROVIDE HOT DIPPED GALVANIZED TRUSS TYPE HORIZONTAL REINFORCEMENT (MIN 9 GA.) AT 16" ON CENTER VERTICFAL IN ALL MASONRY WALLS. PROVIDE DOVE TAIL SLOT ANCHORS AT CONCRETE COLUMNS.

MATERIAL: N/A		DYNOJET RESEARCH 200 ARDEN DRIVE, BELGRADE MT 59714		
FINISH: N/A				
UNLESS OTHERWISE SPECIFIED: TOLERANCES		424-2 W/STD WB AND LINX PIT DIMENSIONS		
DECIMAL X.XX ± 0.01 X.XXX ± 0.005	FRACTIONAL ± 1/16 ANGULAR ± 5°			
DO NOT SCALE THIS DRAWING				
CREATED: CTS	01/13/06			
LAST UPDATE: GLE	04/05/17	SIZE A	PART NO. 98219120	
DESIGNED: JE	APPROVED:	REV 01		
SCALE: X:X		RELEASE DATE:	SHEET 2 OF 5	

ALL IDEAS, DESIGNS, ARRANGEMENTS AND PLANS INDICATED OR REPRESENTED BY THIS DRAWING ARE OWNED BY DYNOJET RESEARCH INC. AND WERE CREATED, EVOLVED AND DEVELOPED FOR USE ON AND IN CONNECTION WITH THE SPECIFIED PROJECT. NONE SUCH IDEAS, DESIGNS, ARRANGEMENTS OR PLANS SHALL BE USED BY OR DISCLOSED TO ANY PERSON, FIRM, OR CORPORATION FOR ANY PURPOSE WHATSOEVER WITHOUT THE WRITTEN PERMISSION OF DYNOJET RESEARCH, INC.

DYNOJET RESEARCH, INC.

REVISIONS				
ECR#	REV	DESCRIPTION	DATE	APPROVED
12592	01	RELEASED	03/21/17	GLE



THE PIT MUST BE PROVIDED WITH EXHAUST VENTILATION AT A RATE OF NOT LESS THAN 230cfm TAKEN FROM A POINT WITHIN 2' [300MM] OF THE FLOOR AT ALL TIMES THAT THE BUILDING IS OCCUPIED OR WHEN VEHICLES ARE PARKED OVER THIS AREA.

#4.00 [101.60MM] PVC PIPE FOR AIR SUPPLY AND ELECTRICAL CABLES
 THE OUTLET OF THESE CONDUITS SHOULD BE PLACED NEAR THE COMPUTER AND DYNO ELECTRONICS. THE COMPUTER AND DYNO ELECTRONICS REQUIRE (1) 110V OUTLET EACH. THE 4WD REQUIRES (1) 110V OUTLET. EACH EDDY CURRENT BRAKE REQUIRES A 240V-30A OUTLET. AIR SUPPLY SHOULD BE 120+ PSI W/A DRYER.

OPTIONAL DUCT 10" DIA or RECT DUCT FOR FORCED COOLING.

VEHICLES SHOULD BE LOADED FROM THIS END.

MATERIAL:	N/A
FINISH:	N/A
UNLESS OTHERWISE SPECIFIED: TOLERANCES	
DECIMAL	FRACTIONAL
X.XX ± 0.01	± 1/16
X.XXX ± 0.005	ANGULAR ± 5°
DO NOT SCALE THIS DRAWING	
CREATED:	CTS 01/13/06
LAST UPDATE:	GLE 04/05/17
DESIGNED:	JE
APPROVED:	

DYNOJET RESEARCH

200 ARDEN DRIVE, BELGRADE MT 59714

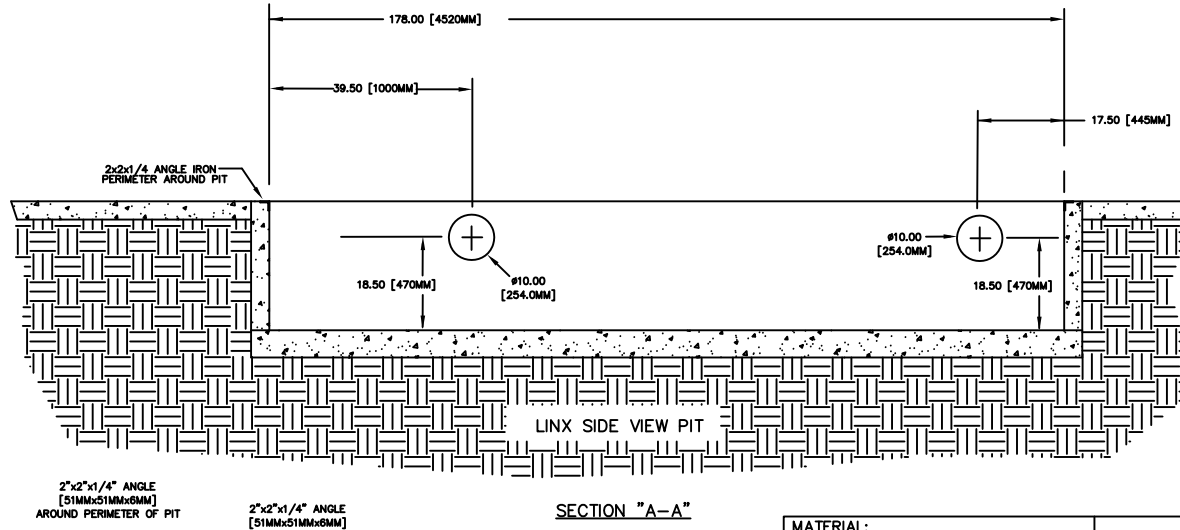
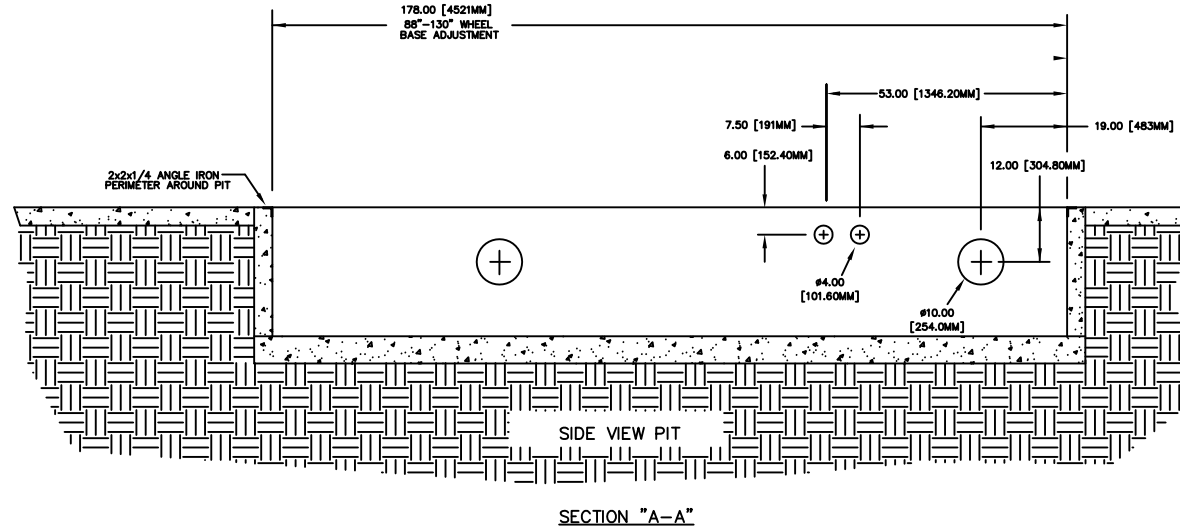
424-2 W/STD WB AND LINX PIT DIMENSIONS

ALL IDEAS, DESIGNS, ARRANGEMENTS AND PLANS INDICATED OR REPRESENTED BY THIS DRAWING ARE OWNED BY DYNOJET RESEARCH INC. AND WERE CREATED, EVOLVED AND DEVELOPED FOR USE ON AND IN CONNECTION WITH THE SPECIFIED PROJECT. NONE SUCH IDEAS, DESIGNS, ARRANGEMENTS OR PLANS SHALL BE USED BY OR DISCLOSED TO ANY PERSON, FIRM, OR CORPORATION FOR ANY PURPOSE WHATSOEVER WITHOUT THE WRITTEN PERMISSION OF DYNOJET RESEARCH, INC..

SIZE	PART NO.	REV
A	98219120	01
SCALE: X: X	RELEASE DATE:	SHEET 3 OF 5

REVISIONS				
ECR#	REV	DESCRIPTION	DATE	APPROVED
12592	01	RELEASED	03/21/17	GLE

STANDARD WHEELBASE WITH LINX AND
WITHOUT EDDY CURRENT BRAKE



2"x2"x1/4" ANGLE
[51MMx51MMx6MM]
AROUND PERIMETER OF PIT

2"x2"x1/4" ANGLE
[51MMx51MMx6MM]

SECTION "A-A"

MATERIAL:	N/A
FINISH:	N/A
UNLESS OTHERWISE SPECIFIED: TOLERANCES	
DECIMAL	FRACTIONAL
X.XX ± 0.01	± 1/16
X.XXX ± 0.005	ANGULAR ± 5°
DO NOT SCALE THIS DRAWING	
CREATED:	CTS 01/13/06
LAST UPDATE:	GLE 04/05/17
DESIGNED:	JE
APPROVED:	

DYNOJET RESEARCH

200 ARDEN DRIVE, BELGRADE MT 59714

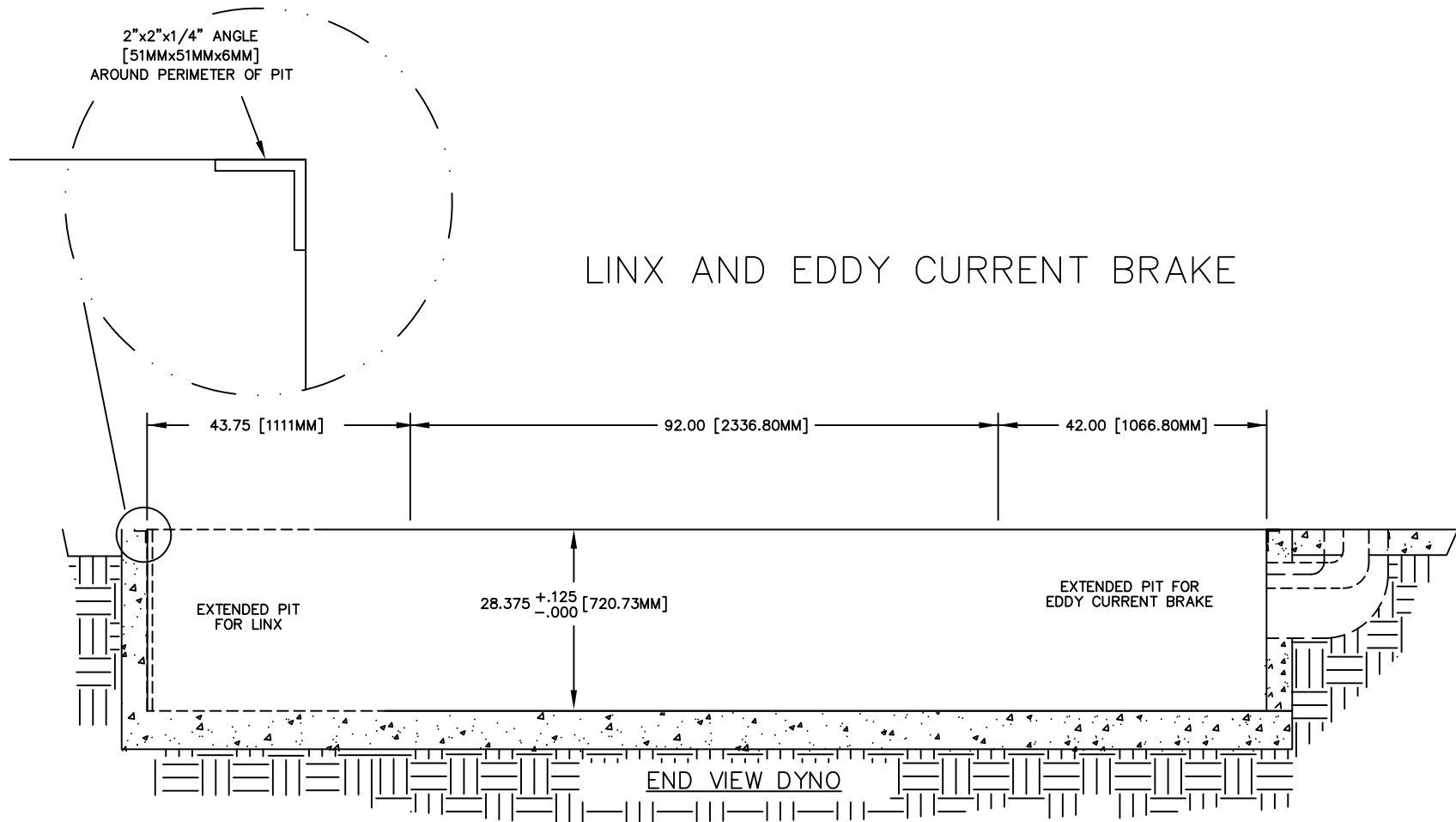
424-2 W/STD WB AND LINX
PIT DIMENSIONS

ALL IDEAS, DESIGNS, ARRANGEMENTS AND PLANS INDICATED OR REPRESENTED BY THIS DRAWING ARE OWNED BY DYNOJET RESEARCH INC. AND WERE CREATED, EVOLVED AND DEVELOPED FOR USE ON AND IN CONNECTION WITH THE SPECIFIED PROJECT. NONE SUCH IDEAS, DESIGNS, ARRANGEMENTS OR PLANS SHALL BE USED BY OR DISCLOSED TO ANY PERSON, FIRM, OR CORPORATION FOR ANY PURPOSE WHATSOEVER WITHOUT THE WRITTEN PERMISSION OF DYNOJET RESEARCH, INC.

DYNOJET RESEARCH, INC.

SIZE	PART NO.	REV
A	98219120	01
SCALE: X: X	RELEASE DATE:	SHEET 4 OF 5

REVISIONS				
ECR#	REV	DESCRIPTION	DATE	APPROVED
12592	01	RELEASE	03/21/17	GLE



SECTION "B-B"

MATERIAL:	N/A	DYNOJET RESEARCH 200 ARDEN DRIVE, BELGRADE MT 59714		
FINISH:	N/A			
UNLESS OTHERWISE SPECIFIED: TOLERANCES		424-2 W/STD WB AND LINX PIT DIMENSIONS		
DECIMAL	FRACTIONAL			
X.XX ± 0.01	± 1/16			
X.XXX ± 0.005	ANGULAR ± 5°			
DO NOT SCALE THIS DRAWING				
CREATED:	CTS 01/13/06			
LAST UPDATE:	GLE 04/05/17	SIZE	PART NO.	REV
DESIGNED:	JE	A	98219120	01
APPROVED:		SCALE: X:X	RELEASE DATE:	SHEET 5 OF 5

ALL IDEAS, DESIGNS, ARRANGEMENTS AND PLANS INDICATED OR REPRESENTED BY THIS DRAWING ARE OWNED BY DYNOJET RESEARCH INC. AND WERE CREATED, EVOLVED AND DEVELOPED FOR USE ON AND IN CONNECTION WITH THE SPECIFIED PROJECT. NONE SUCH IDEAS, DESIGNS, ARRANGEMENTS OR PLANS SHALL BE USED BY OR DISCLOSED TO ANY PERSON, FIRM, OR CORPORATION FOR ANY PURPOSE WHATSOEVER WITHOUT THE WRITTEN PERMISSION OF DYNOJET RESEARCH, INC..

DYNOJET RESEARCH, INC.