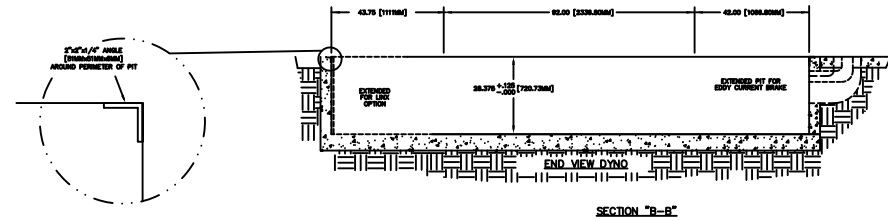
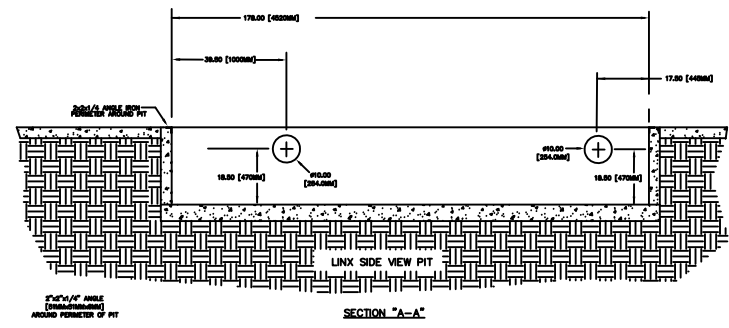
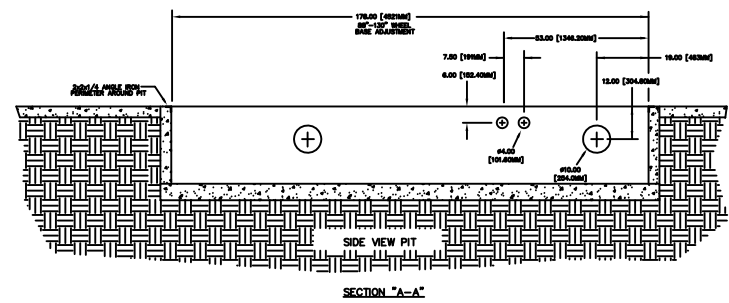
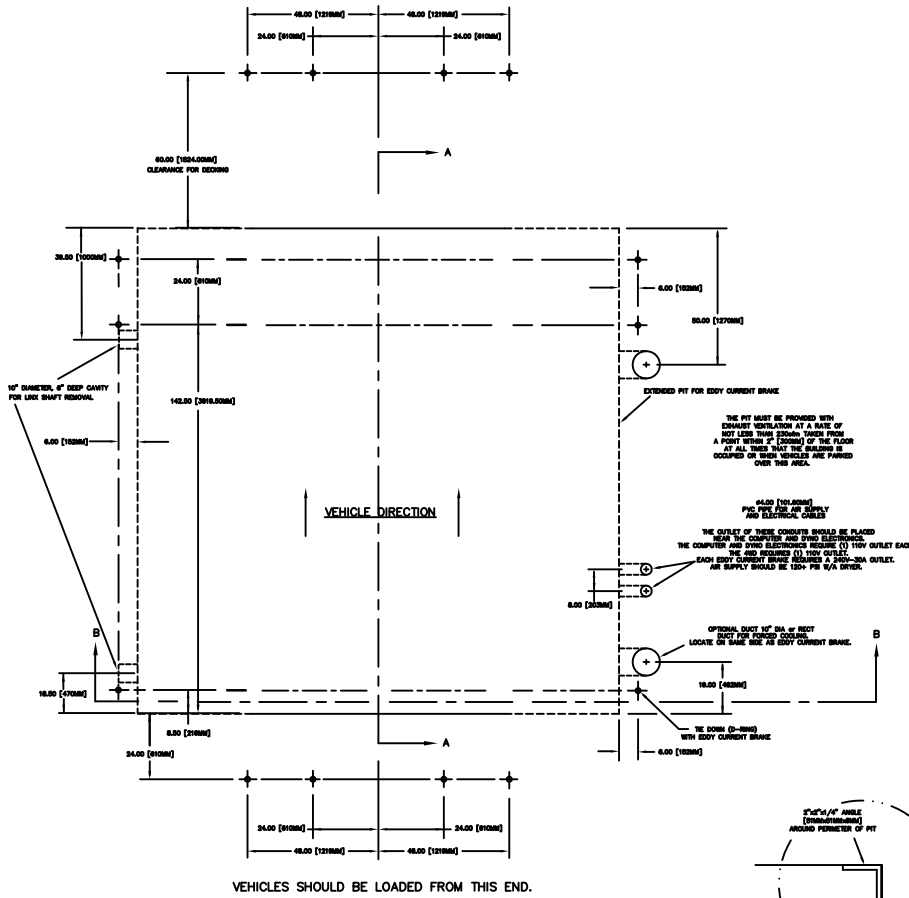


REV		DESCRIPTION	DATE	APPROVED
12592	01	RELEASED	03/21/17	GLE

STANDARD WHEELBASE WITH LINX AND EDDY CURRENT BRAKE



THE PIT MUST BE PROVIDED WITH DRAINAGE VENTILATION AT A RATE OF NOT LESS THAN 20000 CFM FROM A POINT 8 FEET (2.44M) OF THE FLOOR AT ALL TIMES THAT THE BRAKE IS OCCUPIED OR WHEN VEHICLES ARE PARKED OVER THIS AREA.

6.00 [235.02mm] FROM THE PIT TO AIR SUPPLY AND ELECTRICAL CABLES

THE OUTLET OF THESE CONDUITS SHOULD BE PLACED NEAR THE COMPUTER AND SWING ELECTRONICS. THE COMPUTER AND SWING ELECTRONICS REQUIRE (2) TRAY OUTLET EACH.

EACH EDDY CURRENT BRAKE REQUIRES 2 AIR-DRYER OUTLET. AIR SUPPLY SHOULD BE 120+ PSI M/A DRYER.

OPTIONAL DUCT 10" DIA. OF RECT DUCT FOR PORTABLE COOLING. LOCATE ON SAME SIDE AS EDDY CURRENT BRAKE.

TRIE DOWN (2-280) WITH EDDY CURRENT BRAKE

MATERIAL: N/A		<b>DYNOJET RESEARCH</b> 200 ARDEN DRIVE, BELGRADE MT 59714	
FINISH: N/A			
UNLESS OTHERWISE SPECIFIED: TOLERANCES		424-2 W/STD WB,LINX AND BRAKE PIT DIMENSIONS	
DECIMAL	FRACTIONAL		
XXXX ± 0.10	± 1/16		
XXXX ± 0.060	ANGULAR ± 5°		
DO NOT SCALE THIS DRAWING			
CREATED: CTS	01/13/06	SIZE	PART NO.
LAST UPDATE: GLE	04/04/17	D	98219114
DESIGNED: KAN		REV	01
APPROVED:		SCALE: 1:20	RELEASE DATE: SHEET 1 OF 5

ALL IDEAS, DESIGNS, ARRANGEMENTS AND PLANS INDICATED OR REPRESENTED BY THIS DRAWING ARE OWNED BY DYNOJET RESEARCH, INC. AND WERE CREATED, EVOLVED AND DEVELOPED FOR USE ON AND IN CONNECTION WITH THE SPECIFIED PROJECT. NONE OF SUCH IDEAS, DESIGNS, ARRANGEMENTS OR PLANS SHALL BE USED BY OR DISCLOSED TO ANY PERSON, FIRM OR CORPORATION FOR ANY PURPOSE WHATSOEVER WITHOUT THE WRITTEN PERMISSION OF DYNOJET RESEARCH, INC.

REVISIONS				
ECR#	REV	DESCRIPTION	DATE	APPROVED
12592	01	RELEASED	03/21/17	GLE

NOTES:

- ALL DIMENSIONS ARE NOMINAL TO FACE OF MASONRY OR TO FACE OF METAL STUD.
- ALL WORK SHALL BE IN ACCORDANCE WITH LOCAL AND STATE AND OR ANY OTHER GOVERNING CODE REQUIREMENTS.
- VERIFY ALL UNDERGROUND UTILITIES BEFORE EXCAVATION.

STRUCTURAL NOTES

- CODES AND STANDARDS**

THE PROJECT WAS DESIGNED IN ACCORDANCE WITH THE STANDARD BUILDING CODE 1991 EDITION.
- FOUNDATION**

ALL SITE PREPARATION AND EXCAVATION WORK IS TO BE PERFORMED IN STRICT ACCORDANCE WITH THE RECOMMENDATIONS ON SOILS AND FOUNDATIONS INVESTIGATION PREPARED BY AN APPROVED TESTING LABORATORY PRIOR TO FOUNDATION WORK.

BOTTOM OF FOOTINGS TO BEAR ON SOIL CAPABLE OF SAFELY SUPPORTING 2500 PSF.

SOILS SUPPORTING ALL FOOTINGS MUST BE INSPECTED AND APPROVED BY A REGISTERED SOILS ENGINEER BEFORE COMMENCING WORK. APPROVAL IN WRITING MUST INDICATE THE SOIL IS ADEQUATE TO SAFELY SUSTAIN SPECIFIED SOIL BEARING PRESSURE.
- CONCRETE**

ALL CONCRETE SHALL BE READY MIX, HAVE A MINIMUM COMPRESSIVE STRENGTH OF 2800 PSI @ 28 DAYS AND HAVE A MINIMUM OF 517 LBS. OF CEMENT PER CUBIC YARD.

ALL THE CONCRETE WORK SHALL COMPLY WITH THE REQUIREMENTS OF THE ACI BUILDING CODE (ACI 318/LATEST EDITION), THE ACI DETAILING MANUAL (ACI 315/LATEST EDITION), AND THE SPECIFICATIONS FOR STRUCTURAL CONCRETE FOR BUILDINGS (ACI 301/LATEST EDITION)

ALL REINFORCING STEEL SHALL BE MANUFACTURED FROM HIGH STRENGTH BILLET STEEL CONFORMING TO ASTM DESIGNATION A 615 GRADE 60. SPLICES TO LAP MIN 25". CONCRETE COVER MIN. 3" AGAINST EARTH @ SLAB

THE PIT WALLS CAN BE CONSTRUCTED FROM MASONRY BRICK AS ALWAYS CONSULT YOUR CONTRACTOR TO ENSURE THE WALLS WILL STILL MEET THE CODES AND STRUCTURAL STANDARDS
- MASONRY**

MASONRY UNITS SHALL BE ASTM C 90 GRADE N. ALL MORTAR SHALL BE TYPE S (OR TYPE M) IN ACCORDANCE WITH ASTM SPECIFICATION C270.

PROVIDE HOT DIPPED GALVANIZED TRUSS TYPE HORIZONTAL REINFORCEMENT (MIN 9 GA.) AT 16" ON CENTER VERTICFAL IN ALL MASONRY WALLS. PROVIDE DOVE TAIL SLOT ANCHORS AT CONCRETE COLUMNS.

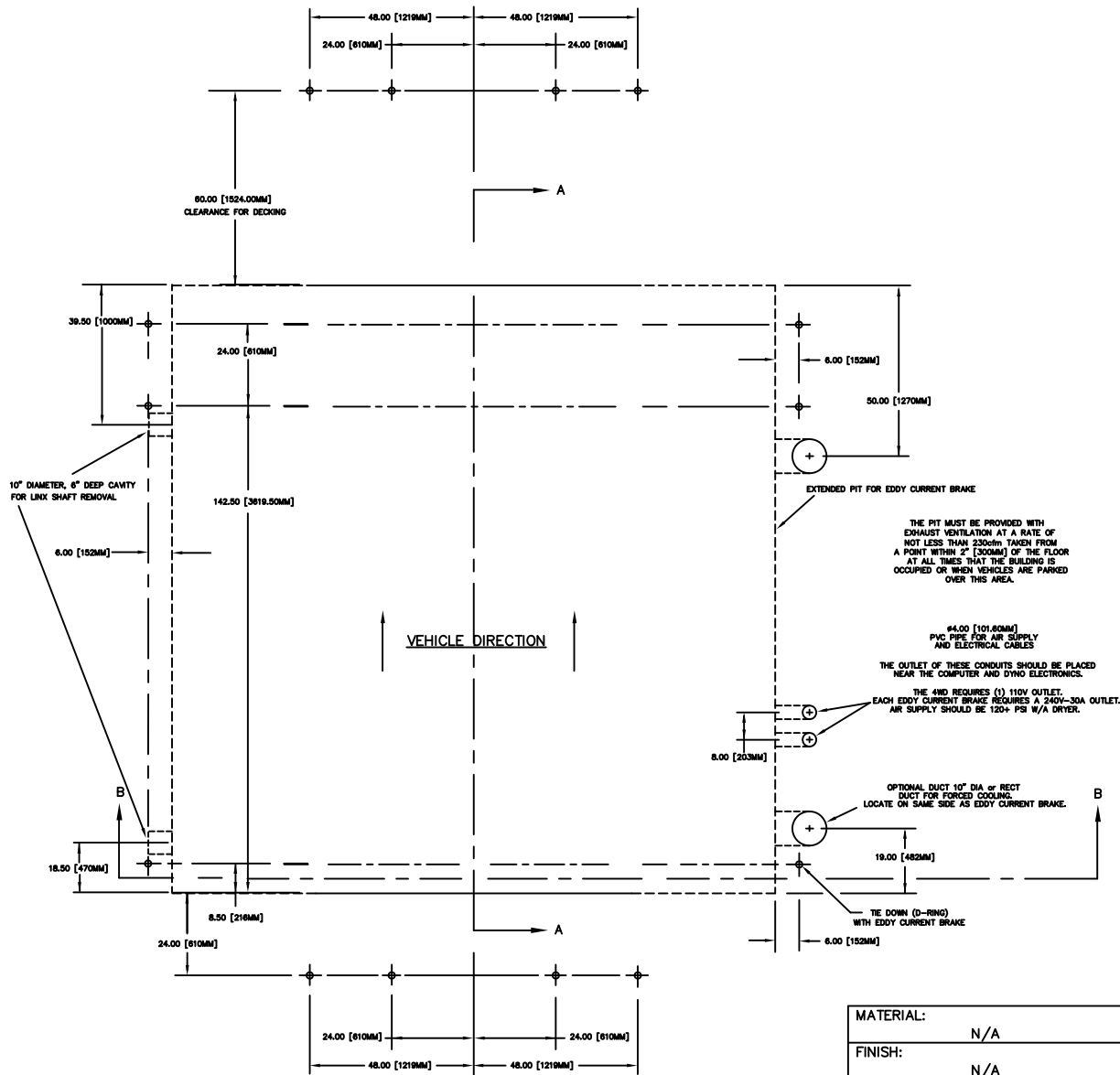
MATERIAL: N/A		<b>DYNOJET RESEARCH</b> 200 ARDEN DRIVE, BELGRADE MT 59714				
FINISH: N/A						
UNLESS OTHERWISE SPECIFIED: TOLERANCES		424-2 W/STD WB,LINX AND BRAKE PIT DIMENSIONS				
DECIMAL X.XX ± 0.01 X.XXX ± 0.005	FRACTIONAL ± 1/16 ANGULAR ± 5°					
DO NOT SCALE THIS DRAWING						
CREATED: CTS	01/13/06					
LAST UPDATE: GLE		04/04/17	SIZE A	PART NO. 98219114	REV 01	
DESIGNED: JE		APPROVED:		SCALE: X:X	RELEASE DATE:	SHEET 2 OF 5

ALL IDEAS, DESIGNS, ARRANGEMENTS AND PLANS INDICATED OR REPRESENTED BY THIS DRAWING ARE OWNED BY DYNOJET RESEARCH INC. AND WERE CREATED, EVOLVED AND DEVELOPED FOR USE ON AND IN CONNECTION WITH THE SPECIFIED PROJECT. NONE SUCH IDEAS, DESIGNS, ARRANGEMENTS OR PLANS SHALL BE USED BY OR DISCLOSED TO ANY PERSON, FIRM, OR CORPORATION FOR ANY PURPOSE WHATSOEVER WITHOUT THE WRITTEN PERMISSION OF DYNOJET RESEARCH, INC.

DYNOJET RESEARCH, INC.

STANDARD WHEELBASE WITH LINX AND EDDY CURRENT BRAKE

REVISIONS				
ECR#	REV	DESCRIPTION	DATE	APPROVED
12592	01	RELEASED	03/21/17	GLE



EXTENDED PIT FOR EDDY CURRENT BRAKE

THE PIT MUST BE PROVIDED WITH EXHAUST VENTILATION AT A RATE OF NOT LESS THAN 230CFM TAKEN FROM A POINT WITHIN 2' [300MM] OF THE FLOOR AT ALL TIMES THAT THE BUILDING IS OCCUPIED OR WHEN VEHICLES ARE PARKED OVER THIS AREA.

4.00 [101.60MM] PVC PIPE FOR AIR SUPPLY AND ELECTRICAL CABLES

THE OUTLET OF THESE CONDUITS SHOULD BE PLACED NEAR THE COMPUTER AND OTHER ELECTRONICS.

THE 4ND REQUIRES (1) 110V OUTLET. EACH EDDY CURRENT BRAKE REQUIRES A 240V-30A OUTLET. AIR SUPPLY SHOULD BE 120+ PSI W/A DRYER.

OPTIONAL DUCT 10" DIA or RECT DUCT FOR FORCED COOLING. LOCATE ON SAME SIDE AS EDDY CURRENT BRAKE.

TEE DOWN (D-RING) WITH EDDY CURRENT BRAKE

VEHICLES SHOULD BE LOADED FROM THIS END.

MATERIAL:	N/A
FINISH:	N/A
UNLESS OTHERWISE SPECIFIED: TOLERANCES	
DECIMAL	FRACTIONAL
X.XX ± 0.01	± 1/16
X.XXX ± 0.005	ANGULAR ± 5°
DO NOT SCALE THIS DRAWING	
CREATED:	CTS 01/13/06
LAST UPDATE:	GLE 04/04/17
DESIGNED:	JE
APPROVED:	

**DYNOJET RESEARCH**  
200 ARDEN DRIVE, BELGRADE MT 59714

424-2 W/STD WB,LINX AND BRAKE  
PIT DIMENSIONS

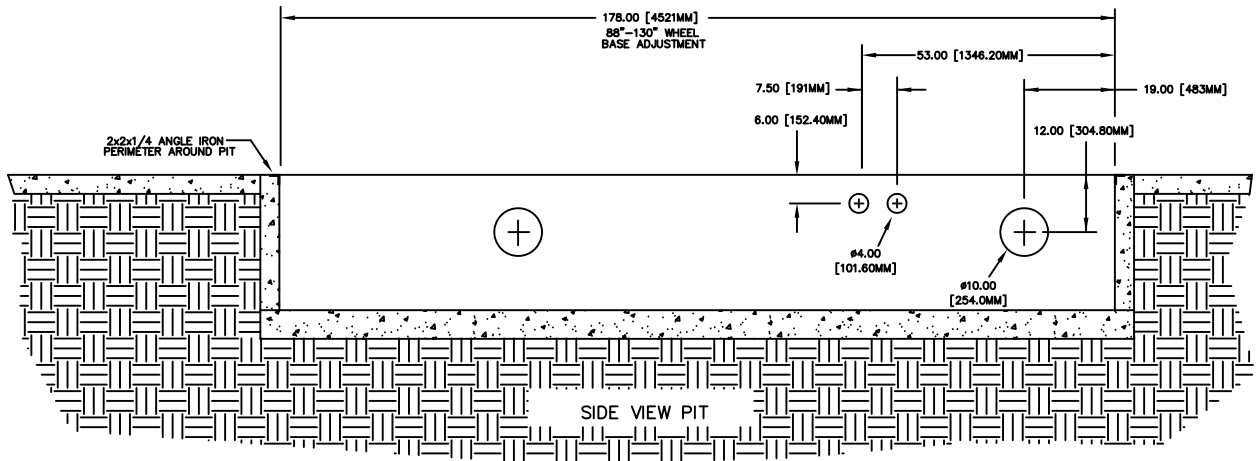
SIZE	PART NO.	REV
A	98219114	01
SCALE: X:X	RELEASE DATE:	SHEET 3 OF 5

ALL IDEAS, DESIGNS, ARRANGEMENTS AND PLANS INDICATED OR REPRESENTED BY THIS DRAWING ARE OWNED BY DYNOJET RESEARCH INC. AND WERE CREATED, EVOLVED AND DEVELOPED FOR USE ON AND IN CONNECTION WITH THE SPECIFIED PROJECT. NONE SUCH IDEAS, DESIGNS, ARRANGEMENTS OR PLANS SHALL BE USED BY OR DISCLOSED TO ANY PERSON, FIRM, OR CORPORATION FOR ANY PURPOSE WHATSOEVER WITHOUT THE WRITTEN PERMISSION OF DYNOJET RESEARCH, INC..

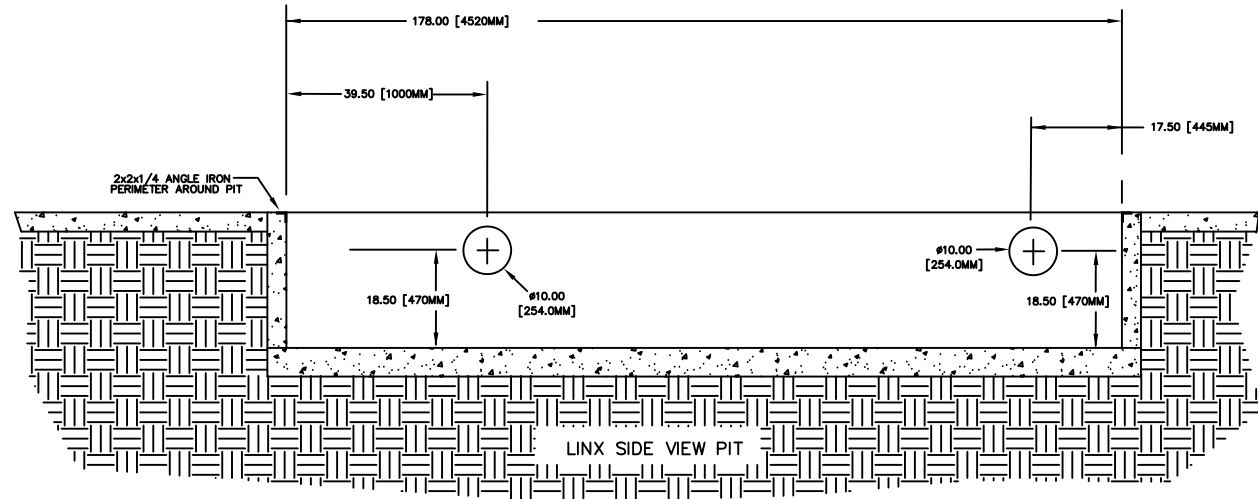
DYNOJET RESEARCH, INC.

# STANDARD WHEELBASE

REVISIONS				
ECR#	REV	DESCRIPTION	DATE	APPROVED
12592	01	RELEASED	03/21/17	GLE



SECTION "A-A"



SECTION "A-A"

2"x2"x1/4" ANGLE [51MMx51MMx6MM] AROUND PERIMETER OF PIT

MATERIAL:	N/A
FINISH:	N/A
UNLESS OTHERWISE SPECIFIED: TOLERANCES	
DECIMAL	FRACTIONAL
X.XX ± 0.01	± 1/16
X.XXX ± 0.005	ANGULAR ± 5°
DO NOT SCALE THIS DRAWING	
CREATED:	CTS 01/13/06
LAST UPDATE:	GLE 04/04/17
DESIGNED:	JE
APPROVED:	

**DYNOJET RESEARCH**  
200 ARDEN DRIVE, BELGRADE MT 59714

424-2 W/STD WB,LINX AND BRAKE PIT DIMENSIONS

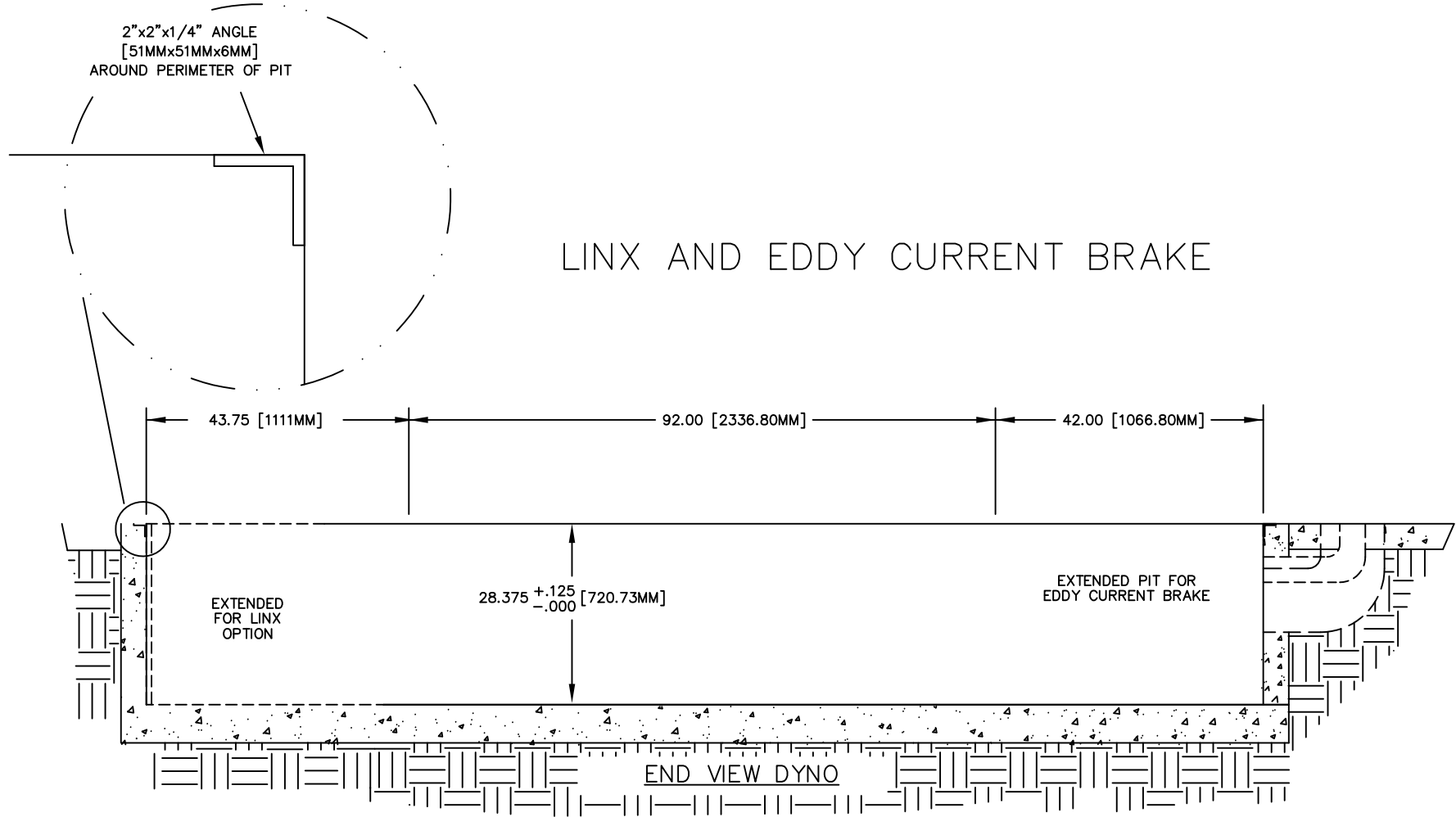
SIZE	PART NO.	REV
A	98219114	01

SCALE: X: X    RELEASE DATE:    SHEET 4 OF 5

ALL IDEAS, DESIGNS, ARRANGEMENTS AND PLANS INDICATED OR REPRESENTED BY THIS DRAWING ARE OWNED BY DYNOJET RESEARCH INC. AND WERE CREATED, EVOLVED AND DEVELOPED FOR USE ON AND IN CONNECTION WITH THE SPECIFIED PROJECT. NONE SUCH IDEAS, DESIGNS, ARRANGEMENTS OR PLANS SHALL BE USED BY OR DISCLOSED TO ANY PERSON, FIRM, OR CORPORATION FOR ANY PURPOSE WHATSOEVER WITHOUT THE WRITTEN PERMISSION OF DYNOJET RESEARCH, INC..

DYNOJET RESEARCH, INC.

REVISIONS				
ECR#	REV	DESCRIPTION	DATE	APPROVED
12592	01	RELEASE	03/21/17	GLE



MATERIAL:	N/A		<b>DYNOJET RESEARCH</b> 200 ARDEN DRIVE, BELGRADE MT 59714
FINISH:	N/A		
UNLESS OTHERWISE SPECIFIED: TOLERANCES			424-2 W/STD WB,LINX AND BRAKE PIT DIMENSIONS
DECIMAL	FRACTIONAL		
X.XX ± 0.01	± 1/16		
X.XXX ± 0.005	ANGULAR ± 5°		
DO NOT SCALE THIS DRAWING			
CREATED:	CTS	01/13/06	
LAST UPDATE:	GLE	04/04/17	SIZE
DESIGNED:	JE		A
APPROVED:			PART NO.
			98219114
			REV
			01
SCALE: X:X		RELEASE DATE:	SHEET 5 OF 5

ALL IDEAS, DESIGNS, ARRANGEMENTS AND PLANS INDICATED OR REPRESENTED BY THIS DRAWING ARE OWNED BY DYNOJET RESEARCH INC. AND WERE CREATED, EVOLVED AND DEVELOPED FOR USE ON AND IN CONNECTION WITH THE SPECIFIED PROJECT. NONE SUCH IDEAS, DESIGNS, ARRANGEMENTS OR PLANS SHALL BE USED BY OR DISCLOSED TO ANY PERSON, FIRM, OR CORPORATION FOR ANY PURPOSE WHATSOEVER WITHOUT THE WRITTEN PERMISSION OF DYNOJET RESEARCH, INC..

DYNOJET RESEARCH, INC.