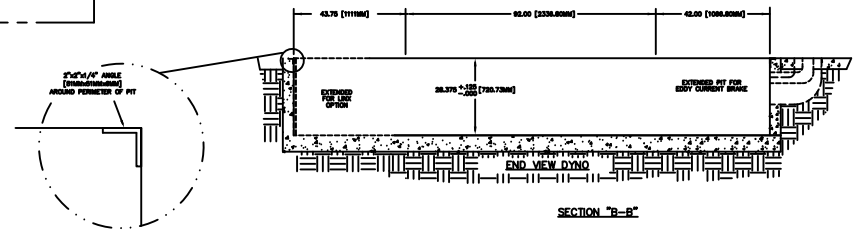
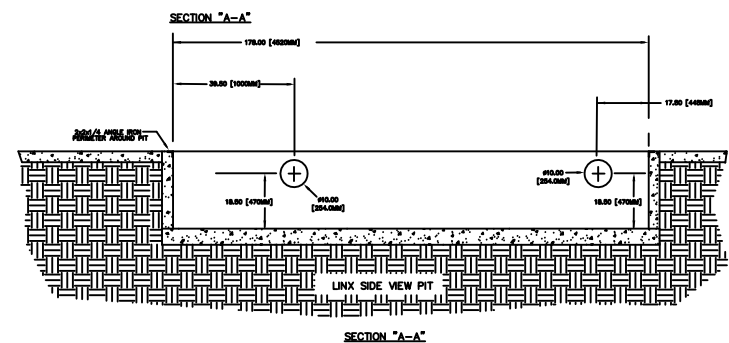
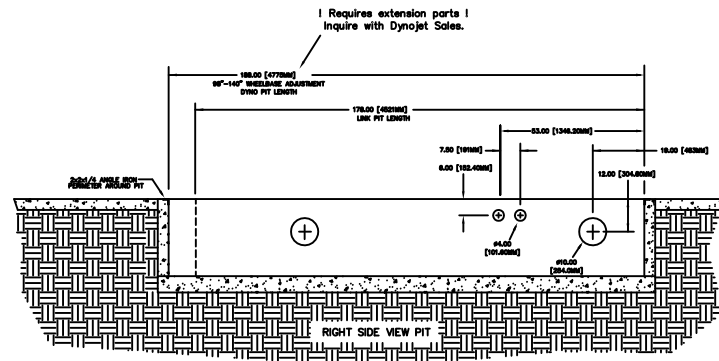
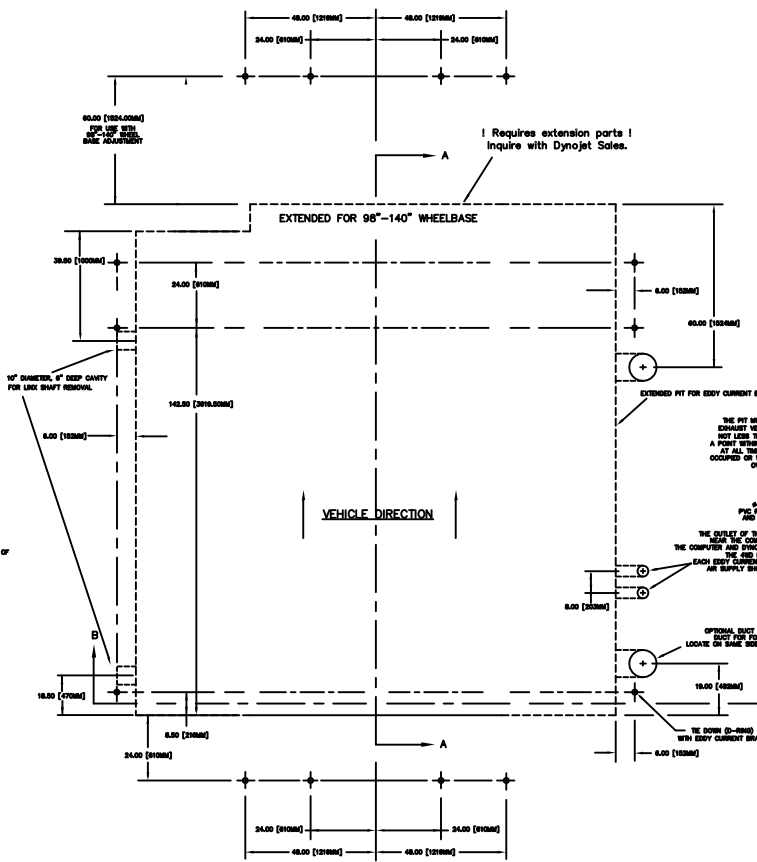


REV		DESCRIPTION	DATE	APPROVED
12592	01	RELEASED	03/21/17	GLE

EXTENDED WHEELBASE WITH LINX AND EDDY CURRENT BRAKE



NOTES:

1. ALL DIMENSIONS ARE NOMINAL TO FACE OF MASONRY OR TO FACE OF METAL STUD.
2. ALL WORK SHALL BE IN ACCORDANCE WITH LOCAL AND STATE AND OR ANY OTHER GOVERNING CODE REQUIREMENTS.
3. VERIFY ALL UNDERGROUND UTILITIES BEFORE EXCAVATION.

STRUCTURAL NOTES

1. CODES AND STANDARDS
THE PROJECT WAS DESIGNED IN ACCORDANCE WITH THE STANDARD BUILDING CODE 1991 EDITION.
2. FOUNDATION
ALL SITE PREPARATION AND EXCAVATION WORK IS TO BE PERFORMED IN STRICT ACCORDANCE WITH THE RECOMMENDATIONS ON SOILS AND FOUNDATIONS INTERPRETATION PROVIDED BY AN APPROVED TESTING LABORATORY PRIOR TO FOUNDATION WORK.
BOTTOM OF FOOTINGS TO BEAR ON SOIL CAPABLE OF SAFELY SUPPORTING 2500 PSF.
SOILS SUPPORTING ALL FOOTINGS MUST BE INSPECTED AND APPROVED BY A REGISTERED SOIL ENGINEER BEFORE COMMENCING WORK. APPROVAL IN WRITING MUST INDICATE THE SOIL IS ADEQUATE TO SAFELY SUSTAIN SPECIFIED SOIL BEARING PRESSURE.
3. CONCRETE
ALL CONCRETE SHALL BE READY MIX, HAVE A MINIMUM COMPRESSIVE STRENGTH OF 2800 PSI @ 28 DAYS AND HAVE A MINIMUM OF 8% AIR OF CONCRETE FOR CURE 1000.
ALL THE CONCRETE WORK SHALL COMPLY WITH THE REQUIREMENTS OF THE ACI BUILDING CODE (ACI 308) LATEST EDITION, THE ACI DESIGN MANUAL (ACI 318) LATEST EDITION, AND THE SPECIFICATIONS FOR STRUCTURAL CONCRETE FOR BUILDINGS (ACI 318) LATEST EDITION.
ALL REINFORCING STEEL SHALL BE MANUFACTURED FROM HIGH STRENGTH WELDED STEEL, CONFORMING TO ASTM SPECIFICATION A 615 GRADE 60, SPLICES TO LAP MIN 30\"/>
- 4. MASONRY
MASONRY UNITS SHALL BE ASTM C 90 GRADE N. ALL MORTAR SHALL BE TYPE S OR TYPE M IN ACCORDANCE WITH ASTM SPECIFICATION C 270.
PROVIDE HOT DIPPED GALVANIZED IRON TYPE HORIZONTAL REINFORCEMENT (RIB # 3) AT 48\"/>

VEHICLES SHOULD BE LOADED FROM THIS END.

10' DIAMETER, 6\"/>

EXTENDED PIT FOR EDDY CURRENT BRAKE

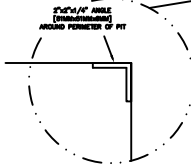
THE PIT MUST BE PROVIDED WITH EXHAUST VENTILATION AT A RATE OF NOT LESS THAN 2500 CFM FROM A POINT 18\"/>

6.00 (152MM) PIT FOR THE COMPUTER AND DYNO ELECTRODS. THE COMPUTER AND DYNO ELECTRODS REQUIRE 1\"/>

OPTIONAL DUCT 10\"/>

LOCATE ON SAME SIDE AS EDDY CURRENT BRAKE.

THE EDDY (R-100) WITH EDDY CURRENT BRAKE



MATERIAL:	N/A	DYNOJET RESEARCH 200 ARDEN DRIVE, BELGRADE MT 59714	
FINISH:	N/A		
UNLESS OTHERWISE SPECIFIED:		424-2 W/EXT WB, LINX AND BRAKE PIT DIMENSIONS	
TOLERANCES			
DECIMAL	FRACTIONAL		
XXXX ± 0.10	± 1/16		
XXXX ± 0.060	ANGULAR ± 5'	8219113	
DO NOT SCALE THIS DRAWING		REV 01	
CREATED:	CTS 01/13/06	SIZE	PART NO.
LAST UPDATE:	GLE 04/04/17	D	98219113
DESIGNED:	KAN	SCALE:	1:20
APPROVED:		RELEASE DATE:	

ALL IDEAS, DESIGNS, ARRANGEMENTS AND PLANS INDICATED OR REPRESENTED BY THIS DRAWING ARE OWNED BY DYNOJET RESEARCH, INC. AND WERE CREATED, EVOLVED AND DEVELOPED FOR USE ON AND IN CONNECTION WITH THE SPECIFIED PROJECT. NONE OF SUCH IDEAS, DESIGNS, ARRANGEMENTS OR PLANS SHALL BE USED BY OR DISCLOSED TO ANY PERSON, FIRM OR CORPORATION FOR ANY PURPOSE WHATSOEVER WITHOUT THE WRITTEN PERMISSION OF DYNOJET RESEARCH, INC.

DYNOJET RESEARCH, INC.

SHEET 1 OF 5

REVISIONS				
ECR#	REV	DESCRIPTION	DATE	APPROVED
12592	01	RELEASED	03/21/17	GLE

NOTES:

1. ALL DIMENSIONS ARE NOMINAL TO FACE OF MASONRY OR TO FACE OF METAL STUD.
2. ALL WORK SHALL BE IN ACCORDANCE WITH LOCAL AND STATE AND OR ANY OTHER GOVERNING CODE REQUIREMENTS.
3. VERIFY ALL UNDERGROUND UTILITIES BEFORE EXCAVATION.

STRUCTURAL NOTES

1. CODES AND STANDARDS

THE PROJECT WAS DESIGNED IN ACCORDANCE WITH THE STANDARD BUILDING CODE 1991 EDITION.
2. FOUNDATION

ALL SITE PREPARATION AND EXCAVATION WORK IS TO BE PERFORMED IN STRICT ACCORDANCE WITH THE RECOMMENDATIONS ON SOILS AND FOUNDATIONS INVESTIGATION PREPARED BY AN APPROVED TESTING LABORATORY PRIOR TO FOUNDATION WORK.

BOTTOM OF FOOTINGS TO BEAR ON SOIL CAPABLE OF SAFELY SUPPORTING 2500 PSF.

SOILS SUPPORTING ALL FOOTINGS MUST BE INSPECTED AND APPROVED BY A REGISTERED SOILS ENGINEER BEFORE COMMENCING WORK. APPROVAL IN WRITING MUST INDICATE THE SOIL IS ADEQUATE TO SAFELY SUSTAIN SPECIFIED SOIL BEARING PRESSURE.
3. CONCRETE

ALL CONCRETE SHALL BE READY MIX, HAVE A MINIMUM COMPRESSIVE STRENGTH OF 2800 PSI @ 28 DAYS AND HAVE A MINIMUM OF 517 LBS. OF CEMENT PER CUBIC YARD.

ALL THE CONCRETE WORK SHALL COMPLY WITH THE REQUIREMENTS OF THE ACI BUILDING CODE (ACI 318/LATEST EDITION), THE ACI DETAILING MANUAL (ACI 315/LATEST EDITION), AND THE SPECIFICATIONS FOR STRUCTURAL CONCRETE FOR BUILDINGS (ACI 301/LATEST EDITION)

ALL REINFORCING STEEL SHALL BE MANUFACTURED FROM HIGH STRENGTH BILLET STEEL CONFORMING TO ASTM DESIGNATION A 615 GRADE 60. SPLICES TO LAP MIN 25". CONCRETE COVER MIN. 3" AGAINST EARTH @ SLAB

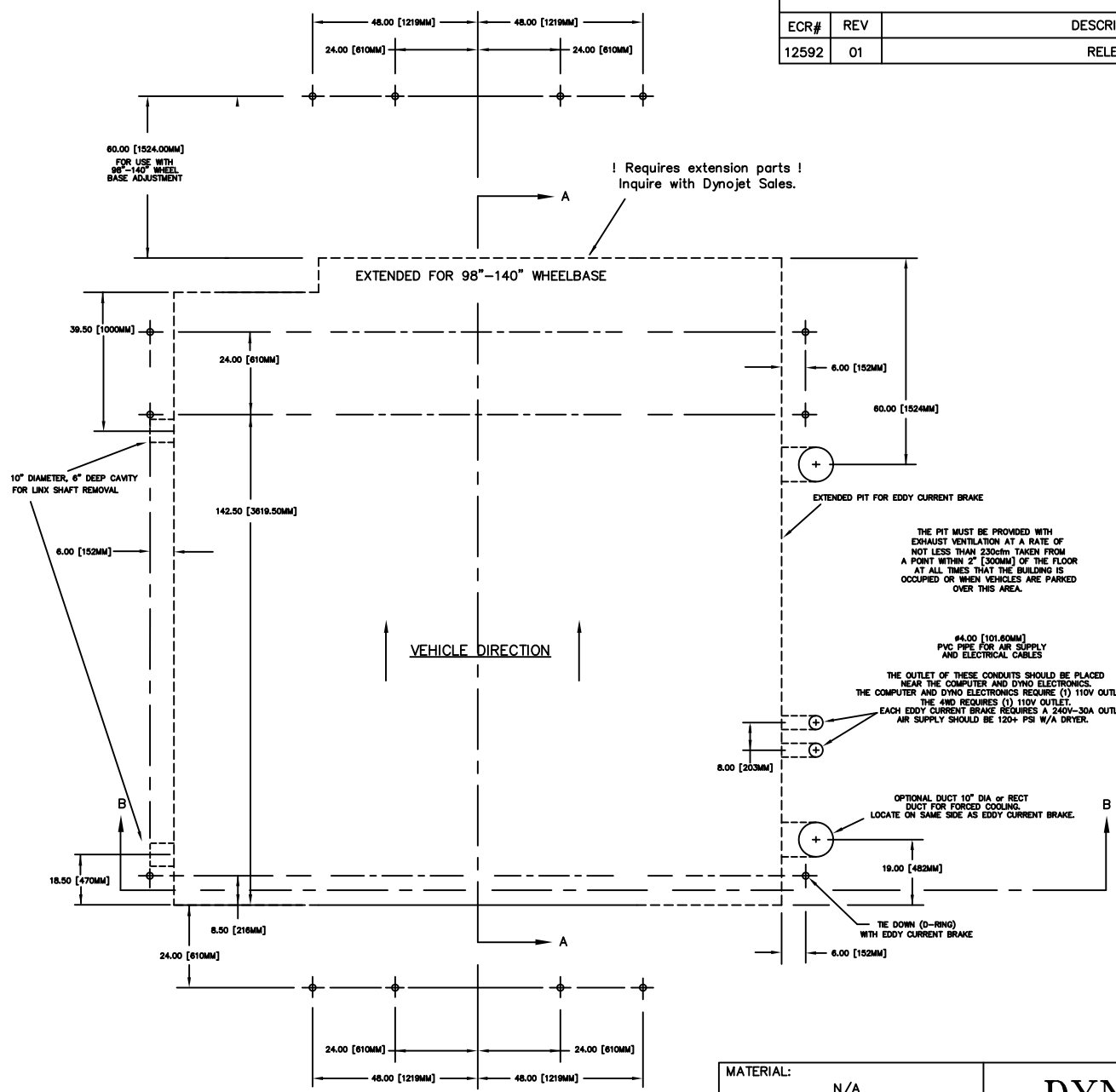
THE PIT WALLS CAN BE CONSTRUCTED FROM MASONRY BRICK AS ALWAYS CONSULT YOUR CONTRACTOR TO ENSURE THE WALLS WILL STILL MEET THE CODES AND STRUCTURAL STANDARDS
4. MASONRY

MASONRY UNITS SHALL BE ASTM C 90 GRADE N. ALL MORTAR SHALL BE TYPE S (OR TYPE M) IN ACCORDANCE WITH ASTM SPECIFICATION C270.

PROVIDE HOT DIPPED GALVANIZED TRUSS TYPE HORIZONTAL REINFORCEMENT (MIN 9 GA.) AT 16" ON CENTER VERTICFAL IN ALL MASONRY WALLS. PROVIDE DOVE TAIL SLOT ANCHORS AT CONCRETE COLUMNS.

MATERIAL: N/A		DYNOJET RESEARCH 200 ARDEN DRIVE, BELGRADE MT 59714			
FINISH: N/A					
UNLESS OTHERWISE SPECIFIED: TOLERANCES		424-2 W/EXT WB,LINX AND BRAKE PIT DIMENSIONS			
DECIMAL X.XX ± 0.01 X.XXX ± 0.005	FRACTIONAL ± 1/16 ANGULAR ± 5'				
DO NOT SCALE THIS DRAWING					
CREATED: CTS	01/13/06				
LAST UPDATE: GLE	04/04/17	SIZE A	PART NO. 98219113		
DESIGNED: JE	APPROVED:	SCALE: X:X		REV 01	
ALL IDEAS, DESIGNS, ARRANGEMENTS AND PLANS INDICATED OR REPRESENTED BY THIS DRAWING ARE OWNED BY DYNOJET RESEARCH INC. AND WERE CREATED, EVOLVED AND DEVELOPED FOR USE ON AND IN CONNECTION WITH THE SPECIFIED PROJECT. NONE SUCH IDEAS, DESIGNS, ARRANGEMENTS OR PLANS SHALL BE USED BY OR DISCLOSED TO ANY PERSON, FIRM, OR CORPORATION FOR ANY PURPOSE WHATSOEVER WITHOUT THE WRITTEN PERMISSION OF DYNOJET RESEARCH, INC.		DYNOJET RESEARCH, INC.		RELEASE DATE:	SHEET 2 OF 5

REVISIONS				
ECR#	REV	DESCRIPTION	DATE	APPROVED
12592	01	RELEASED	03/21/17	GLE



VEHICLES SHOULD BE LOADED FROM THIS END.

MATERIAL:	N/A
FINISH:	N/A
UNLESS OTHERWISE SPECIFIED: TOLERANCES	
DECIMAL	FRACTIONAL
X.XX ± 0.01	± 1/16
X.XXX ± 0.005	ANGULAR ± 5°
DO NOT SCALE THIS DRAWING	
CREATED:	CTS 01/13/06
LAST UPDATE:	GLE 04/04/17
DESIGNED:	JE
APPROVED:	

DYNOJET RESEARCH

200 ARDEN DRIVE, BELGRADE MT 59714

424-2 W/EXT WB,LINX AND BRAKE PIT DIMENSIONS

ALL IDEAS, DESIGNS, ARRANGEMENTS AND PLANS INDICATED OR REPRESENTED BY THIS DRAWING ARE OWNED BY DYNOJET RESEARCH INC. AND WERE CREATED, EVOLVED AND DEVELOPED FOR USE ON AND IN CONNECTION WITH THE SPECIFIED PROJECT. NONE SUCH IDEAS, DESIGNS, ARRANGEMENTS OR PLANS SHALL BE USED BY OR DISCLOSED TO ANY PERSON, FIRM, OR CORPORATION FOR ANY PURPOSE WHATSOEVER WITHOUT THE WRITTEN PERMISSION OF DYNOJET RESEARCH, INC..

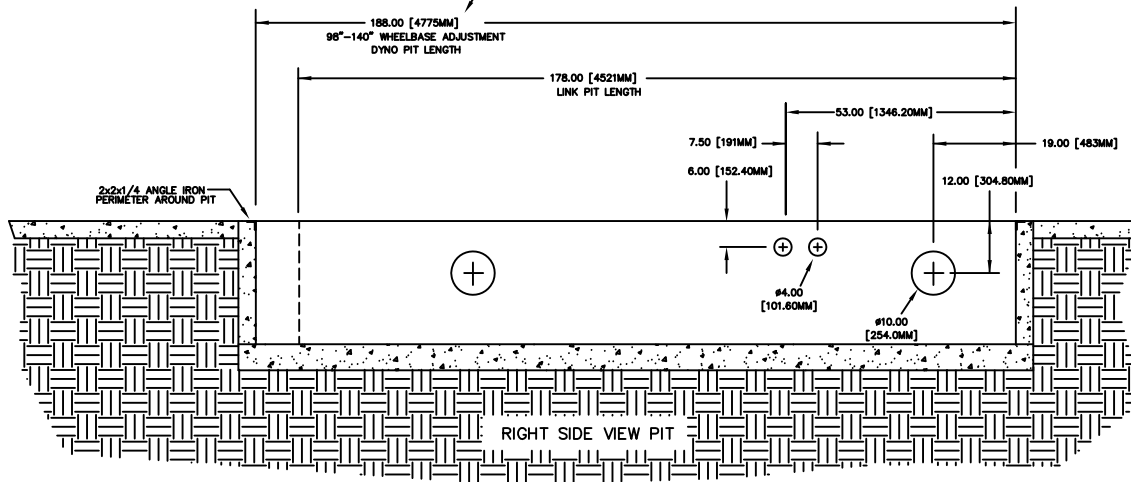
DYNOJET RESEARCH, INC.

SIZE	PART NO.	REV
A	98219113	01
SCALE: X: X	RELEASE DATE:	SHEET 3 OF 5

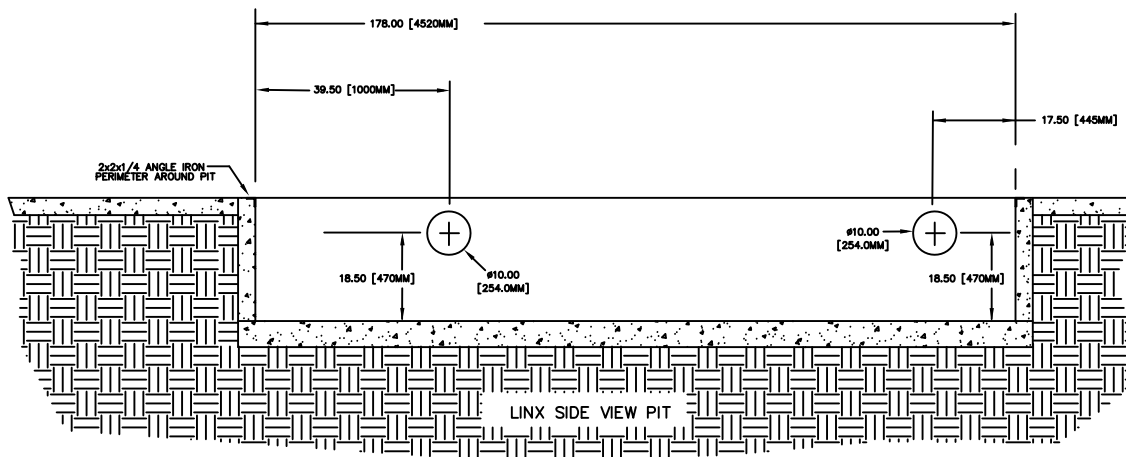
EXTENDED WHEELBASE

! Requires extension parts !
Inquire with Dynojet Sales.

REVISIONS				
ECR#	REV	DESCRIPTION	DATE	APPROVED
12592	01	RELEASED	03/21/17	GLE



SECTION "A-A"



SECTION "A-A"

MATERIAL:	N/A
FINISH:	N/A
UNLESS OTHERWISE SPECIFIED: TOLERANCES	
DECIMAL	FRACTIONAL
X.XX ± 0.01	± 1/16
X.XXX ± 0.005	ANGULAR ± 5°
DO NOT SCALE THIS DRAWING	
CREATED:	CTS 01/13/06
LAST UPDATE:	GLE 04/04/17
DESIGNED:	JE
APPROVED:	

DYNOJET RESEARCH

200 ARDEN DRIVE, BELGRADE MT 59714

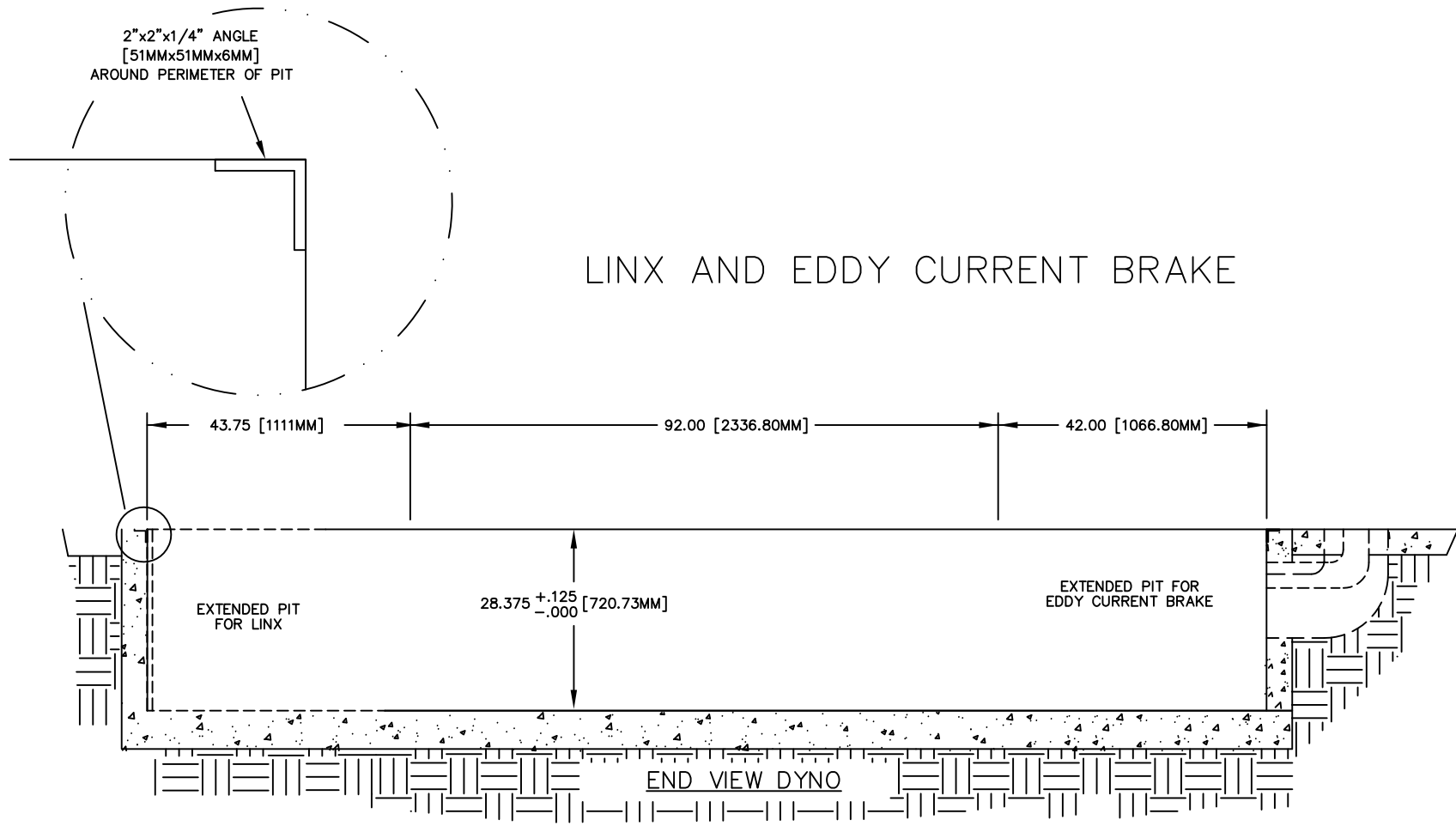
424-2 W/EXT WB,LINX AND BRAKE
PIT DIMENSIONS

ALL IDEAS, DESIGNS, ARRANGEMENTS AND PLANS INDICATED OR REPRESENTED BY THIS DRAWING ARE OWNED BY DYNOJET RESEARCH INC. AND WERE CREATED, EVOLVED AND DEVELOPED FOR USE ON AND IN CONNECTION WITH THE SPECIFIED PROJECT. NONE SUCH IDEAS, DESIGNS, ARRANGEMENTS OR PLANS SHALL BE USED BY OR DISCLOSED TO ANY PERSON, FIRM, OR CORPORATION FOR ANY PURPOSE WHATSOEVER WITHOUT THE WRITTEN PERMISSION OF DYNOJET RESEARCH, INC.

DYNOJET RESEARCH, INC.

SIZE	PART NO.	REV
A	98219113	01
SCALE: X: X	RELEASE DATE:	SHEET 4 OF 5

REVISIONS				
ECR#	REV	DESCRIPTION	DATE	APPROVED
12592	01	RELEASE	03/21/17	GLE



SECTION "B-B"

MATERIAL:	N/A	DYNOJET RESEARCH 200 ARDEN DRIVE, BELGRADE MT 59714		
FINISH:	N/A			
UNLESS OTHERWISE SPECIFIED: TOLERANCES		424-2 W/EXT WB,LINX AND BRAKE PIT DIMENSIONS		
DECIMAL	FRACTIONAL			
X.XX ± 0.01	± 1/16			
X.XXX ± 0.005	ANGULAR ± 5°			
DO NOT SCALE THIS DRAWING				
CREATED:	CTS 01/13/06			
LAST UPDATE:	GLE 04/04/17	SIZE	PART NO.	REV
DESIGNED:	JE	A	98219113	01
APPROVED:		SCALE: X:X	RELEASE DATE:	SHEET 5 OF 5

ALL IDEAS, DESIGNS, ARRANGEMENTS AND PLANS INDICATED OR REPRESENTED BY THIS DRAWING ARE OWNED BY DYNOJET RESEARCH INC. AND WERE CREATED, EVOLVED AND DEVELOPED FOR USE ON AND IN CONNECTION WITH THE SPECIFIED PROJECT. NONE SUCH IDEAS, DESIGNS, ARRANGEMENTS OR PLANS SHALL BE USED BY OR DISCLOSED TO ANY PERSON, FIRM, OR CORPORATION FOR ANY PURPOSE WHATSOEVER WITHOUT THE WRITTEN PERMISSION OF DYNOJET RESEARCH, INC..

DYNOJET RESEARCH, INC.