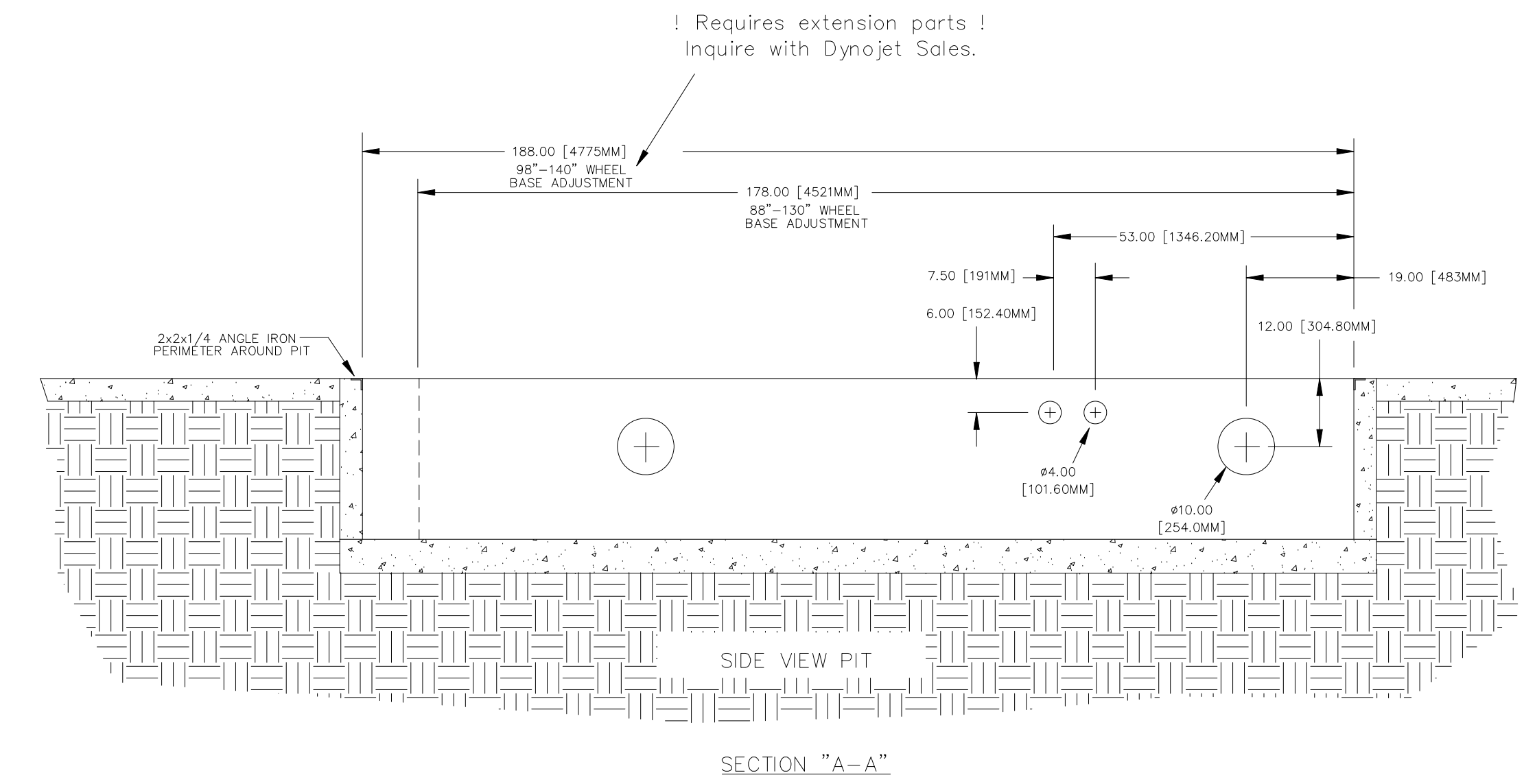
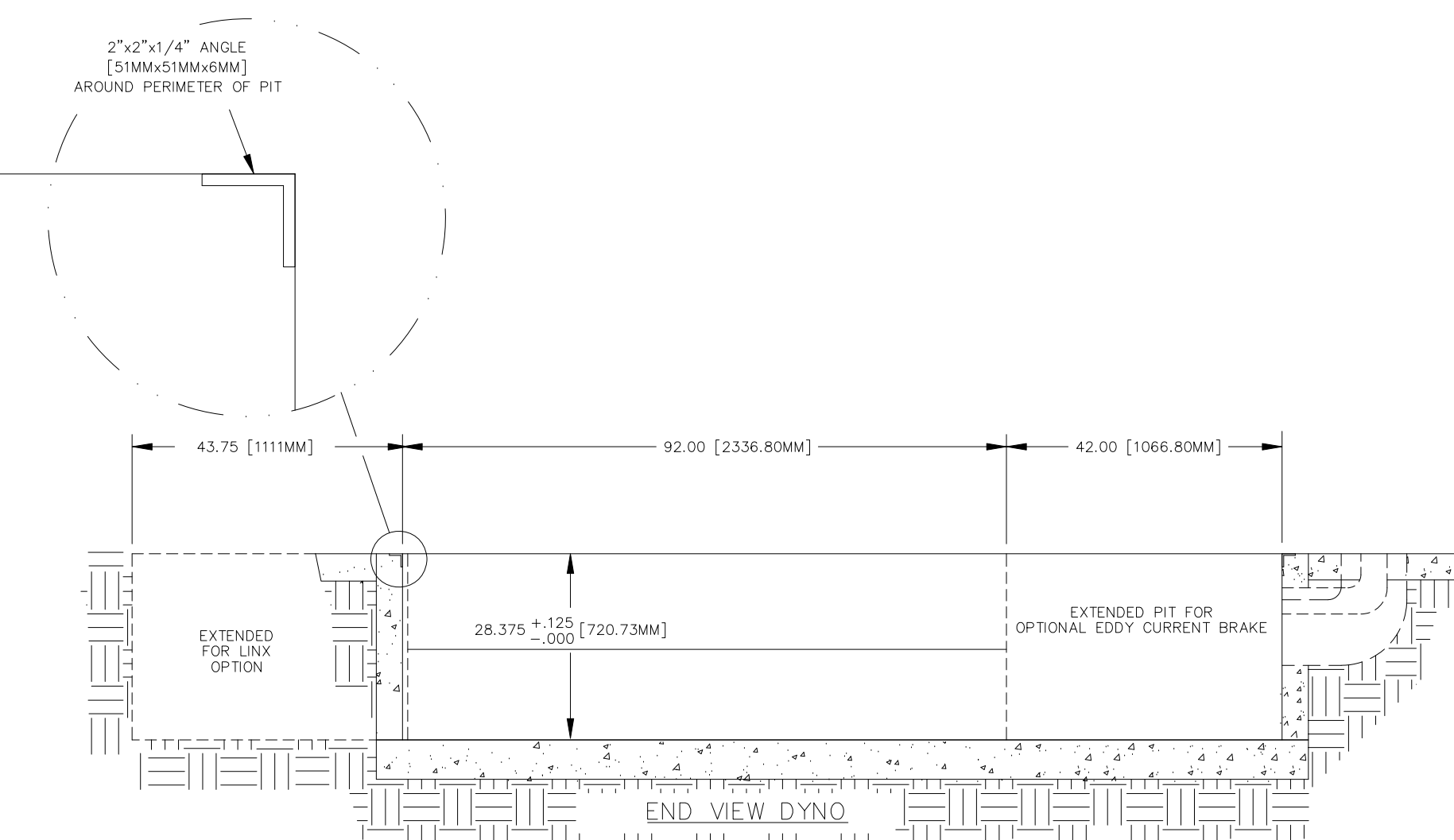
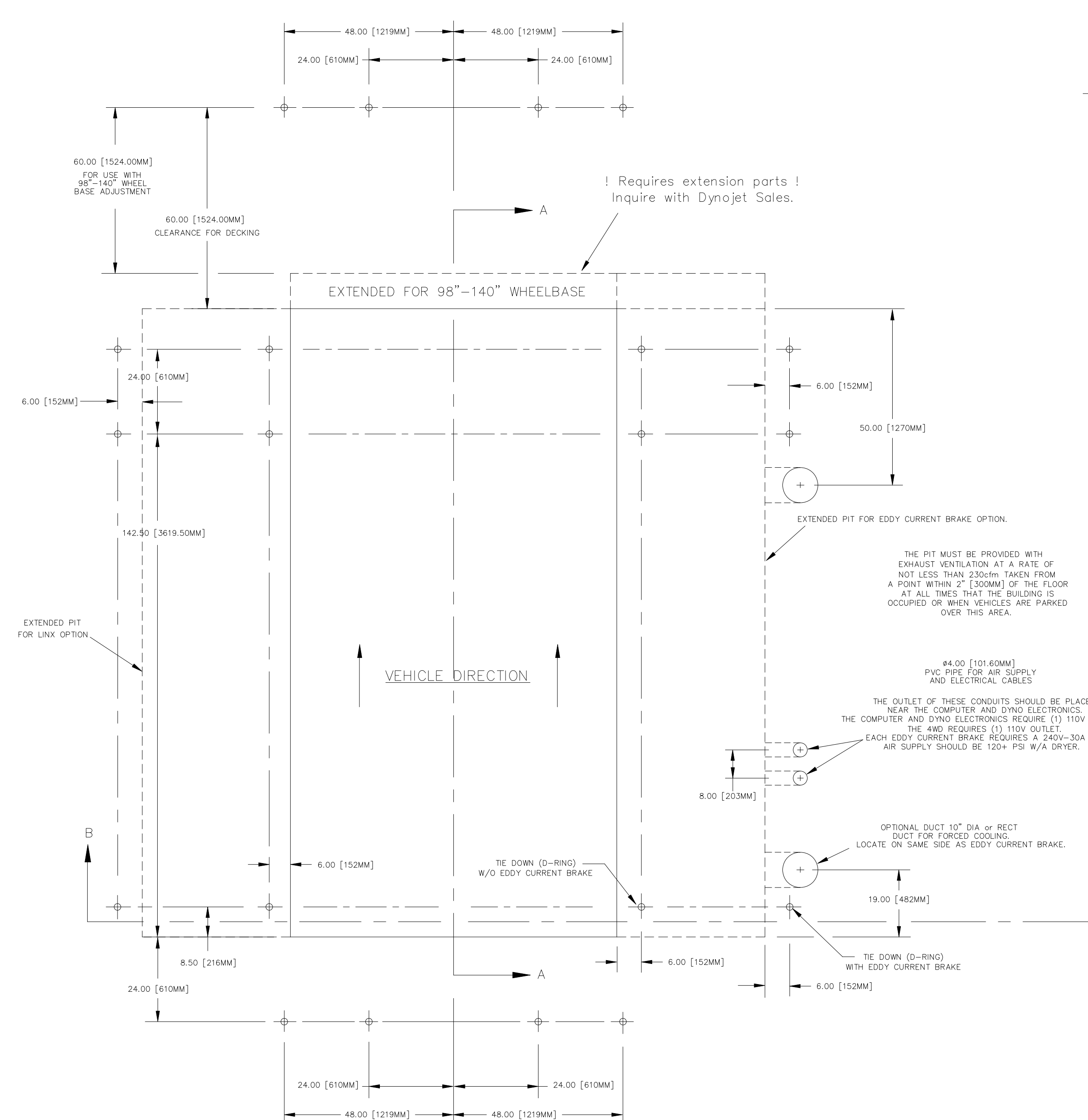


REVISIONS				
ECR #	REV	DESCRIPTION	DATE	APPROVED
2795	02	UPDATE DIMENSIONS FOR USE W/EXTENDED WHEELBASE	03/22/06	JFE
3082	03	UPDATE DIMENSION LOCATION(TOP TO SECTION VIEW) FOR CLARITY	08/02/06	JFE
6348	04	ADDITION OF LINX OPTION AND VENTILATION NOTE	11/19/08	JFE
7250	05	ADDITION OF "REQUIRES EXTENSION PARTS" NOTE	06/17/10	JFE
7786	06	ADD 1.75" TO THE WIDTH OF THE LINX SECTION OF THE PIT	02/03/11	JFE



- NOTES:**
- ALL DIMENSIONS ARE NOMINAL TO FACE OF MASONRY OR TO FACE OF METAL STUD.
 - ALL WORK SHALL BE IN ACCORDANCE WITH LOCAL AND STATE AND OR ANY OTHER GOVERNING CODE REQUIREMENTS.
 - VERIFY ALL UNDERGROUND UTILITIES BEFORE EXCAVATION.
- STRUCTURAL NOTES**
- CODES AND STANDARDS
THE PROJECT WAS DESIGNED IN ACCORDANCE WITH THE STANDARD BUILDING CODE 1991 EDITION.
 - FOUNDATION
ALL SITE PREPARATION AND EXCAVATION WORK IS TO BE PERFORMED IN STRICT ACCORDANCE WITH THE RECOMMENDATIONS ON SOILS AND FOUNDATIONS INVESTIGATION PREPARED BY AN APPROVED TESTING LABORATORY PRIOR TO FOUNDATION WORK.
BOTTOM OF FOOTINGS TO BEAR ON SOIL CAPABLE OF SAFELY SUPPORTING 2500 PSF.
SOILS SUPPORTING ALL FOOTINGS MUST BE INSPECTED AND APPROVED BY A REGISTERED SOILS ENGINEER BEFORE COMMENCING WORK. APPROVAL IN WRITING MUST INDICATE THE SOIL IS ADEQUATE TO SAFELY SUSTAIN SPECIFIED SOIL BEARING PRESSURE.
 - CONCRETE
ALL CONCRETE SHALL BE READY MIX, HAVE A MINIMUM COMPRESSIVE STRENGTH OF 2800 PSI @ 28 DAYS AND HAVE A MINIMUM OF 517 LBS. OF CEMENT PER CUBIC YARD.
ALL THE CONCRETE WORK SHALL COMPLY WITH THE REQUIREMENTS OF THE ACI BUILDING CODE (ACI 318/LATEST EDITION), THE ACI DETAILING MANUAL (ACI 315/LATEST EDITION), AND THE SPECIFICATIONS FOR STRUCTURAL CONCRETE FOR BUILDINGS (ACI 301/LATEST EDITION)
ALL REINFORCING STEEL SHALL BE MANUFACTURED FROM HIGH STRENGTH BILLET STEEL CONFORMING TO ASTM DESIGNATION A 615 GRADE 60. SPLICES TO LAP MIN 25". CONCRETE COVER MIN. 3" AGAINST EARTH @ SLAB
THE PIT WALLS CAN BE CONSTRUCTED FROM MASONRY BRICK AS ALWAYS CONSULT YOUR CONTRACTOR TO ENSURE THE WALLS WILL STILL MEET THE CODES AND STRUCTURAL STANDARDS
 - MASONRY
MASONRY UNITS SHALL BE ASTM C 90 GRADE N. ALL MORTAR SHALL BE TYPE S (OR TYPE M) IN ACCORDANCE WITH ASTM SPECIFICATION C270.
PROVIDE HOT DIPPED GALVANIZED TRUSS TYPE HORIZONTAL REINFORCEMENT (MIN 9 GA.) AT 16" ON CENTER VERTICAL IN ALL MASONRY WALLS. PROVIDE DOVE TAIL SLOT ANCHORS AT CONCRETE COLUMNS.

VEHICLES SHOULD BE LOADED FROM THIS END.

ALL IDEAS, DESIGNS, ARRANGEMENTS AND PLANS INDICATED OR REPRESENTED BY THIS DRAWING ARE OWNED BY DYNOJET RESEARCH, INC. AND WERE CREATED, EVOLVED AND DEVELOPED FOR USE ON AND IN CONNECTION WITH THE SPECIFIED PROJECT. NONE OF SUCH IDEAS, DESIGNS, ARRANGEMENTS OR PLANS SHALL BE USED BY OR DISCLOSED TO ANY PERSON, FIRM OR CORPORATION FOR ANY PURPOSE WHATSOEVER WITHOUT THE WRITTEN PERMISSION OF DYNOJET RESEARCH, INC.

MATERIAL:	N/A
FINISH:	N/A
UNLESS OTHERWISE SPECIFIED:	TOLERANCES
DECIMAL	FRACTIONAL
X.XX ± 0.10	± 1/16
X.XXX ± 0.060	ANGULAR ± 5'
DO NOT SCALE THIS DRAWING	
CREATED:	CTS 01/13/06
LAST UPDATE:	JE 02/03/11
DESIGNED:	KAN
APPROVED:	

DYNOJET RESEARCH
200 ARDEN DRIVE, BELGRADE MT 59714

424-2
PIT DIMENSIONS

SIZE	PART NO.	REV
D	98219111	06
SCALE: 1:20	RELEASE DATE:	SHEET 1 OF 1

NOTES:

1. ALL DIMENSIONS ARE NOMINAL TO FACE OF MASONRY OR TO FACE OF METAL STUD.
2. ALL WORK SHALL BE IN ACCORDANCE WITH LOCAL AND STATE AND OR ANY OTHER GOVERNING CODE REQUIREMENTS.
3. VERIFY ALL UNDERGROUND UTILITIES BEFORE EXCAVATION.

STRUCTURAL NOTES

1. **CODES AND STANDARDS**
 THE PROJECT WAS DESIGNED IN ACCORDANCE WITH THE STANDARD BUILDING CODE 1991 EDITION.
2. **FOUNDATION**
 ALL SITE PREPARATION AND EXCAVATION WORK IS TO BE PERFORMED IN STRICT ACCORDANCE WITH THE RECOMMENDATIONS ON SOILS AND FOUNDATIONS INVESTIGATION PREPARED BY AN APPROVED TESTING LABORATORY PRIOR TO FOUNDATION WORK.

 BOTTOM OF FOOTINGS TO BEAR ON SOIL CAPABLE OF SAFELY SUPPORTING 2500 PSF.

 SOILS SUPPORTING ALL FOOTINGS MUST BE INSPECTED AND APPROVED BY A REGISTERED SOILS ENGINEER BEFORE COMMENCING WORK. APPROVAL IN WRITING MUST INDICATE THE SOIL IS ADEQUATE TO SAFELY SUSTAIN SPECIFIED SOIL BEARING PRESSURE.
3. **CONCRETE**
 ALL CONCRETE SHALL BE READY MIX, HAVE A MINIMUM COMPRESSIVE STRENGTH OF 2800 PSI @ 28 DAYS AND HAVE A MINIMUM OF 517 LBS. OF CEMENT PER CUBIC YARD.

 ALL THE CONCRETE WORK SHALL COMPLY WITH THE REQUIREMENTS OF THE ACI BUILDING CODE (ACI 318/LATEST EDITION), THE ACI DETAILING MANUAL (ACI 315/LATEST EDITION), AND THE SPECIFICATIONS FOR STRUCTURAL CONCRETE FOR BUILDINGS (ACI 301/LATEST EDITION)

 ALL REINFORCING STEEL SHALL BE MANUFACTURED FROM HIGH STRENGTH BILLET STEEL CONFORMING TO ASTM DESIGNATION A 615 GRADE 60. SPLICES TO LAP MIN 25". CONCRETE COVER MIN. 3" AGAINST EARTH @ SLAB

 THE PIT WALLS CAN BE CONSTRUCTED FROM MASONARY BRICK AS ALWAYS CONSULT YOUR CONTRACTOR TO ENSURE THE WALLS WILL STILL MEET THE CODES AND STRUCTURAL STANDARDS
4. **MASONRY**
 MASONRY UNITS SHALL BE ASTM C 90 GRADE N. ALL MORTAR SHALL BE TYPE S (OR TYPE M) IN ACCORDANCE WITH ASTM SPECIFICATION C270.

 PROVIDE HOT DIPPED GALVANIZED TRUSS TYPE HORIZONTAL REINFORCEMENT (MIN 9 GA.) AT 16" ON CENTER VERTICFAL IN ALL MASONRY WALLS. PROVIDE DOVE TAIL SLOT ANCHORS AT CONCRETE COLUMNS.

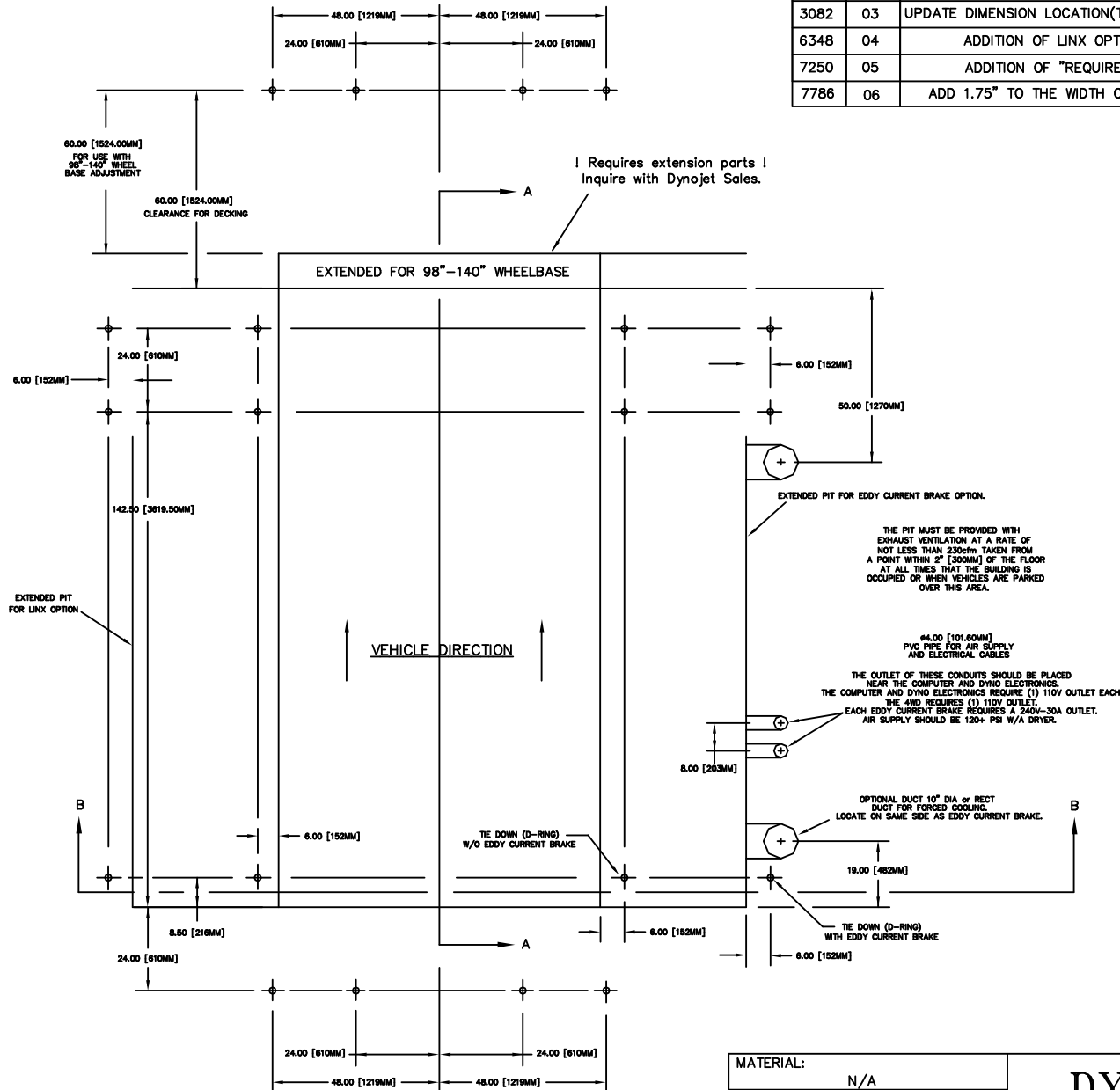
REVISIONS				
ECR#	REV	DESCRIPTION	DATE	APPROVED
2795	02	UPDATE DIMENSIONS FOR USE W/EXTENDED WHEELBASE	03/22/06	JFE
3082	03	UPDATE DIMENSION LOCATION(TOP TO SECTION VIEW) FOR CLARITY	08/02/06	JFE
6348	04	ADDITION OF LINX OPTION AND VENTILATION NOTE	11/19/08	JFE
7250	05	ADDITION OF "REQUIRES EXTENSION PARTS" NOTE	06/17/10	JFE
7786	06	ADD 1.75" TO THE WIDTH OF THE LINX SECTION OF THE PIT	02/03/11	JFE

MATERIAL: N/A		DYNOJET RESEARCH 200 ARDEN DRIVE, BELGRADE MT 59714		
FINISH: N/A				
UNLESS OTHERWISE SPECIFIED: TOLERANCES		424-2 PIT DIMENSIONS		
DECIMAL X.XX ± 0.01 X.XXX ± 0.005	FRACTIONAL ± 1/16 ANGULAR ± 5°			
DO NOT SCALE THIS DRAWING				
CREATED: CTS	01/13/06			
LAST UPDATE: JE	02/03/11	SIZE A	PART NO. 98219111	REV 06
DESIGNED: JE		APPROVED:	SCALE: X: X	RELEASE DATE:
		SHEET 1 OF 4		

ALL IDEAS, DESIGNS, ARRANGEMENTS AND PLANS INDICATED OR REPRESENTED BY THIS DRAWING ARE OWNED BY DYNOJET RESEARCH INC. AND WERE CREATED, EVOLVED AND DEVELOPED FOR USE ON AND IN CONNECTION WITH THE SPECIFIED PROJECT. NONE SUCH IDEAS, DESIGNS, ARRANGEMENTS OR PLANS SHALL BE USED BY OR DISCLOSED TO ANY PERSON, FIRM, OR CORPORATION FOR ANY PURPOSE WHATSOEVER WITHOUT THE WRITTEN PERMISSION OF DYNOJET RESEARCH, INC.

DYNOJET RESEARCH, INC.

REVISIONS				
ECR#	REV	DESCRIPTION	DATE	APPROVED
2795	02	UPDATE DIMENSIONS FOR USE W/EXTENDED WHEELBASE	03/22/06	JFE
3082	03	UPDATE DIMENSION LOCATION(TOP TO SECTION VIEW) FOR CLARITY	08/02/06	JFE
6348	04	ADDITION OF LINX OPTION AND VENTILATION NOTE	11/19/08	JFE
7250	05	ADDITION OF "REQUIRES EXTENSION PARTS" NOTE	06/17/10	JFE
7786	06	ADD 1.75" TO THE WIDTH OF THE LINX SECTION OF THE PIT	02/03/11	JFE



MATERIAL:	N/A
FINISH:	N/A
UNLESS OTHERWISE SPECIFIED:	TOLERANCES
DECIMAL	FRACTIONAL
X.XX ± 0.01	± 1/16
X.XXX ± 0.005	ANGULAR ± 5'
DO NOT SCALE THIS DRAWING	
CREATED:	CTS 01/13/06
LAST UPDATE:	JE 02/03/11
DESIGNED:	JE
APPROVED:	

DYNOJET RESEARCH

200 ARDEN DRIVE, BELGRADE MT 59714

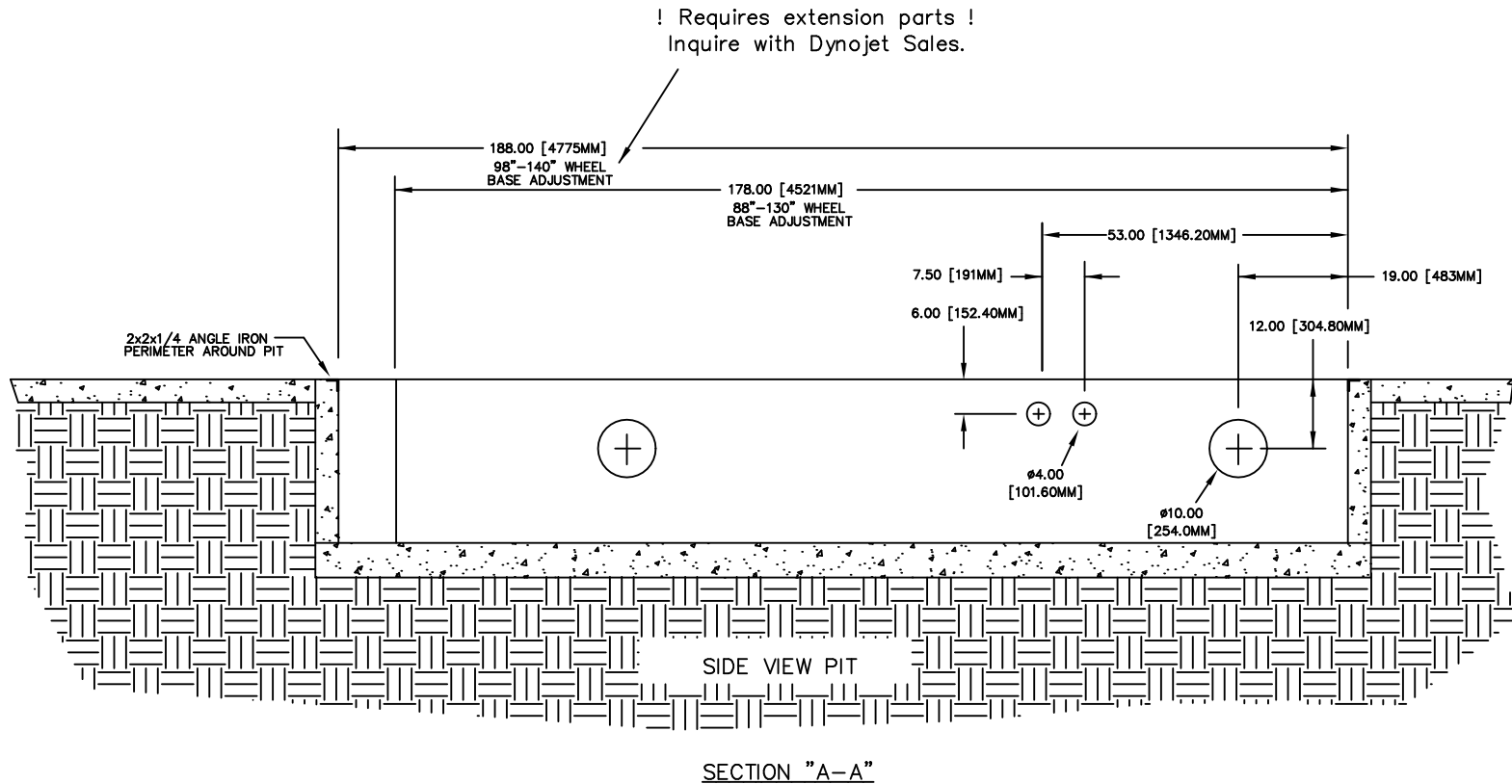
424-2 PIT DIMENSIONS

SIZE	PART NO.	REV
A	98219111	06
SCALE: X:X	RELEASE DATE:	SHEET 2 OF 4

ALL IDEAS, DESIGNS, ARRANGEMENTS AND PLANS INDICATED OR REPRESENTED BY THIS DRAWING ARE OWNED BY DYNOJET RESEARCH INC. AND WERE CREATED, EVOLVED AND DEVELOPED FOR USE ON AND IN CONNECTION WITH THE SPECIFIED PROJECT. NONE SUCH IDEAS, DESIGNS, ARRANGEMENTS OR PLANS SHALL BE USED BY OR DISCLOSED TO ANY PERSON, FIRM, OR CORPORATION FOR ANY PURPOSE WHATSOEVER WITHOUT THE WRITTEN PERMISSION OF DYNOJET RESEARCH, INC.

DYNOJET RESEARCH, INC.

REVISIONS				
ECR#	REV	DESCRIPTION	DATE	APPROVED
2795	02	UPDATE DIMENSIONS FOR USE W/EXTENDED WHEELBASE	03/22/06	JFE
3082	03	UPDATE DIMENSION LOCATION(TOP TO SECTION VIEW) FOR CLARITY	08/02/06	JFE
6348	04	ADDITION OF LINX OPTION AND VENTILATION NOTE	11/19/08	JFE
7250	05	ADDITION OF "REQUIRES EXTENSION PARTS" NOTE	06/17/10	JFE
7786	06	ADD 1.75" TO THE WIDTH OF THE LINX SECTION OF THE PIT	02/03/11	JFE



MATERIAL:	N/A	
FINISH:	N/A	
UNLESS OTHERWISE SPECIFIED:	TOLERANCES	
DECIMAL	FRACATIONAL	
X.XX ± 0.01	± 1/16	
X.XXX ± 0.005	ANGULAR	± 5°
DO NOT SCALE THIS DRAWING		
CREATED:	CTS	01/13/06
LAST UPDATE:	JE	02/03/11
DESIGNED:	JE	
APPROVED:		

DYNOJET RESEARCH

200 ARDEN DRIVE, BELGRADE MT 59714

424-2 PIT DIMENSIONS

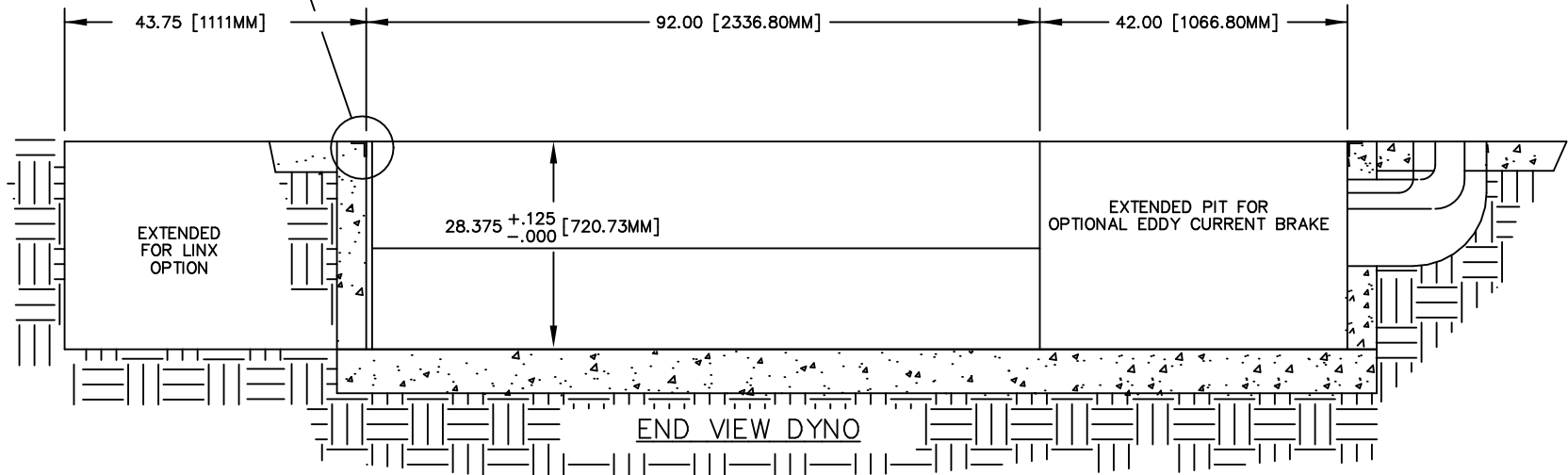
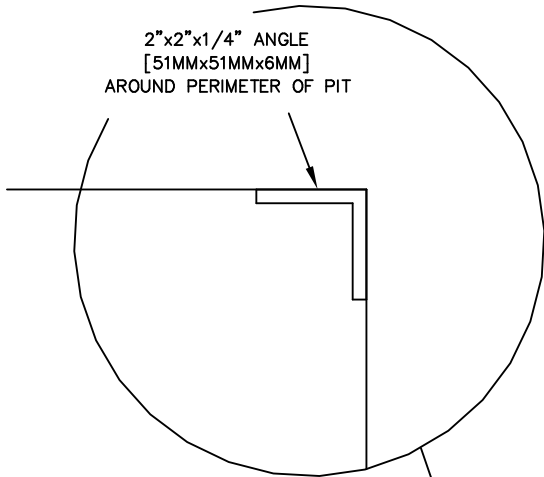
SIZE	PART NO.
A	98219111
APPROVED:	

REV	06
SCALE: X:X	RELEASE DATE:
SHEET 3	OF 4

ALL IDEAS, DESIGNS, ARRANGEMENTS AND PLANS INDICATED OR REPRESENTED BY THIS DRAWING ARE OWNED BY DYNOJET RESEARCH INC. AND WERE CREATED, EVOLVED AND DEVELOPED FOR USE ON AND IN CONNECTION WITH THE SPECIFIED PROJECT. NONE SUCH IDEAS, DESIGNS, ARRANGEMENTS OR PLANS SHALL BE USED BY OR DISCLOSED TO ANY PERSON, FIRM, OR CORPORATION FOR ANY PURPOSE WHATSOEVER WITHOUT THE WRITTEN PERMISSION OF DYNOJET RESEARCH, INC.

DYNOJET RESEARCH, INC.

REVISIONS				
ECR#	REV	DESCRIPTION	DATE	APPROVED
2795	02	UPDATE DIMENSIONS FOR USE W/EXTENDED WHEELBASE	03/22/06	JFE
3082	03	UPDATE DIMENSION LOCATION(TOP TO SECTION VIEW) FOR CLARITY	08/02/06	JFE
6348	04	ADDITION OF LINX OPTION AND VENTILATION NOTE	11/19/08	JFE
7250	05	ADDITION OF "REQUIRES EXTENSION PARTS" NOTE	06/17/10	JFE
7786	06	ADD 1.75" TO THE WIDTH OF THE LINX SECTION OF THE PIT	02/03/11	JFE



SECTION "B-B"

MATERIAL:	N/A
FINISH:	N/A
UNLESS OTHERWISE SPECIFIED: TOLERANCES	
DECIMAL X.XX ± 0.01	FRACTIONAL ± 1/16
X.XXX ± 0.005	ANGULAR ± 5°
DO NOT SCALE THIS DRAWING	
CREATED:	CTS 01/13/06

DYNOJET RESEARCH

200 ARDEN DRIVE, BELGRADE MT 59714

424-2 PIT DIMENSIONS

LAST UPDATE:	JE 02/03/11
DESIGNED:	JE
APPROVED:	

SIZE	PART NO.	REV
A	98219111	06
SCALE: X:X	RELEASE DATE:	SHEET 4 OF 4

ALL IDEAS, DESIGNS, ARRANGEMENTS AND PLANS INDICATED OR REPRESENTED BY THIS DRAWING ARE OWNED BY DYNOJET RESEARCH INC. AND WERE CREATED, EVOLVED AND DEVELOPED FOR USE ON AND IN CONNECTION WITH THE SPECIFIED PROJECT. NONE SUCH IDEAS, DESIGNS, ARRANGEMENTS OR PLANS SHALL BE USED BY OR DISCLOSED TO ANY PERSON, FIRM, OR CORPORATION FOR ANY PURPOSE WHATSOEVER WITHOUT THE WRITTEN PERMISSION OF DYNOJET RESEARCH, INC.

DYNOJET RESEARCH, INC.