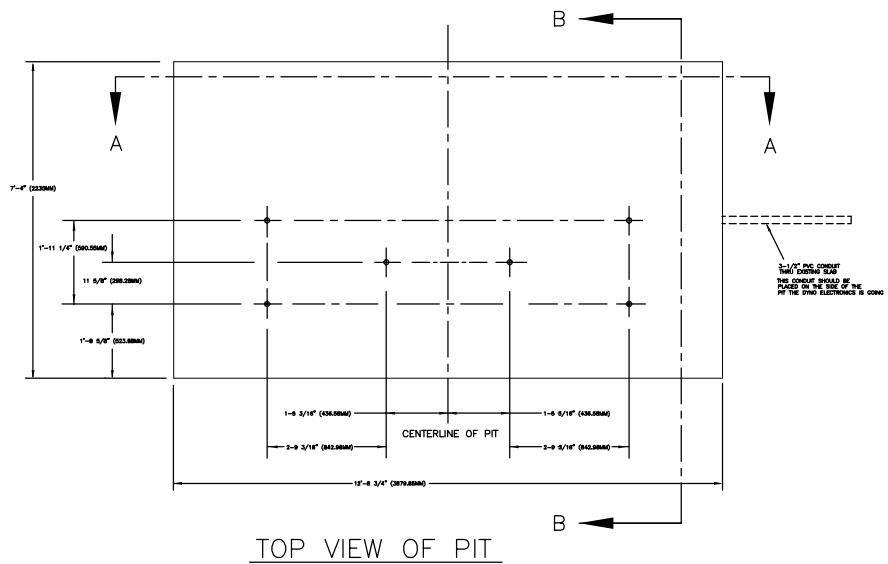
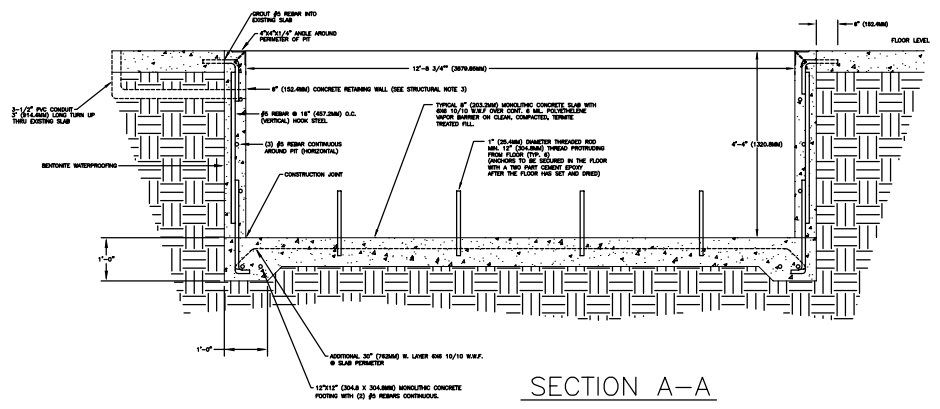


- NOTES, UNLESS OTHERWISE SPECIFIED:
1. ALL DIMENSIONS ARE IN DECIMAL INCHES.
  2. REMOVE ALL BURRS & SHARP EDGES.
  3. REMOVE ALL TOOLING MARKS.
  4. DIMENSIONS & TOLERANCES SHALL BE HELD AFTER PLATING OR FINISH.

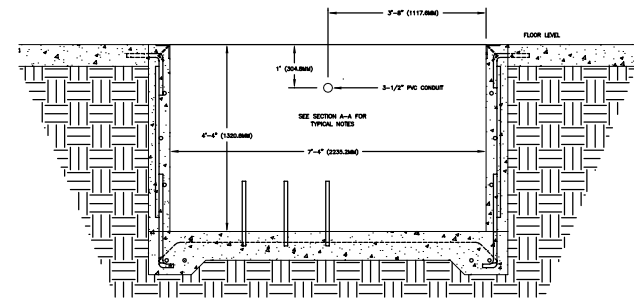
REVISIONS				
ECR#	REV	DESCRIPTION	DATE	APPROVED



TOP VIEW OF PIT



SECTION A-A



SECTION B-B

NOTES:

1. ALL DIMENSIONS ARE NOMINAL TO FACE OF MASONRY OR TO FACE OF METAL STUD.
  2. ALL WORK SHALL BE IN ACCORDANCE WITH LOCAL AND STATE AND OR ANY OTHER GOVERNING CODE REQUIREMENTS.
  3. VERIFY ALL UNDERGROUND UTILITIES BEFORE EXCAVATION.
- STRUCTURAL NOTES**
1. CODES AND STANDARDS  
THE PROJECT WAS DESIGNED IN ACCORDANCE WITH THE STANDARD BUILDING CODE 1991 EDITION.
  2. FOUNDATION  
ALL SITE PREPARATION AND EXCAVATION WORK IS TO BE PERFORMED IN STRICT ACCORDANCE WITH THE RECOMMENDATIONS ON SOILS AND FOUNDATIONS INVESTIGATION PREPARED BY AN APPROVED TESTING LABORATORY PRIOR TO FOUNDATION WORK.  
BOTTOM OF FOOTINGS TO BEAR ON SOIL CAPABLE OF SAFELY SUPPORTING 2500 PSF.  
SOILS SUPPORTING ALL FOOTINGS MUST BE INSPECTED AND APPROVED BY A REGISTERED SOILS ENGINEER BEFORE COMMENCING WORK. APPROVAL IN WRITING MUST INDICATE THE SOIL IS ADEQUATE TO SAFELY SUSTAIN SPECIFIED SOIL BEARING PRESSURE.

STRUCTURAL NOTES:

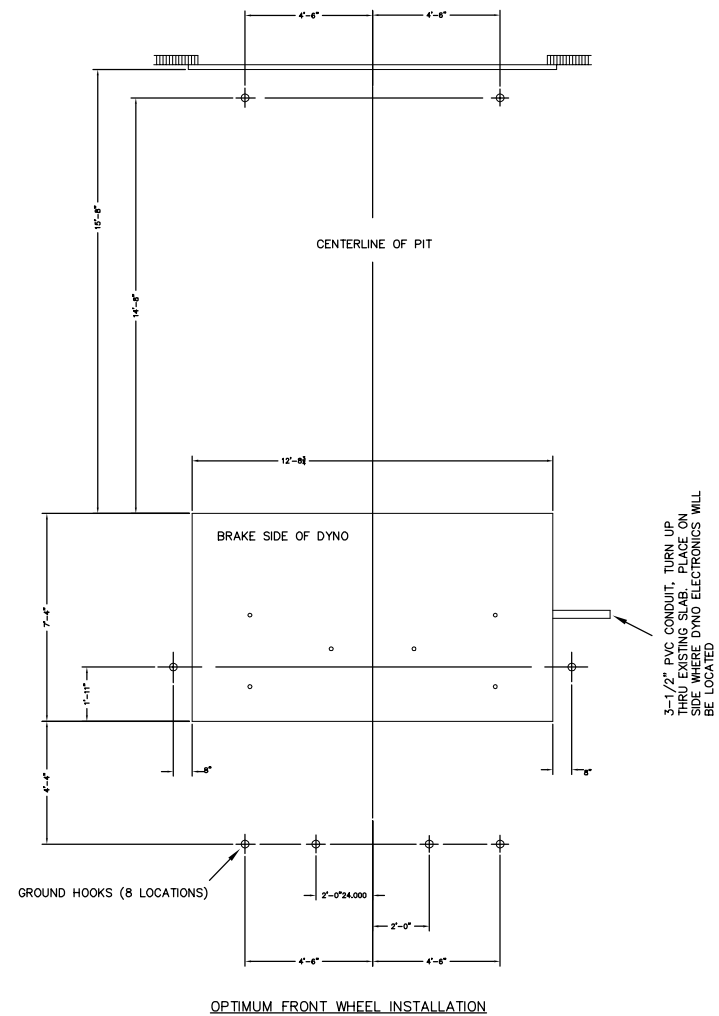
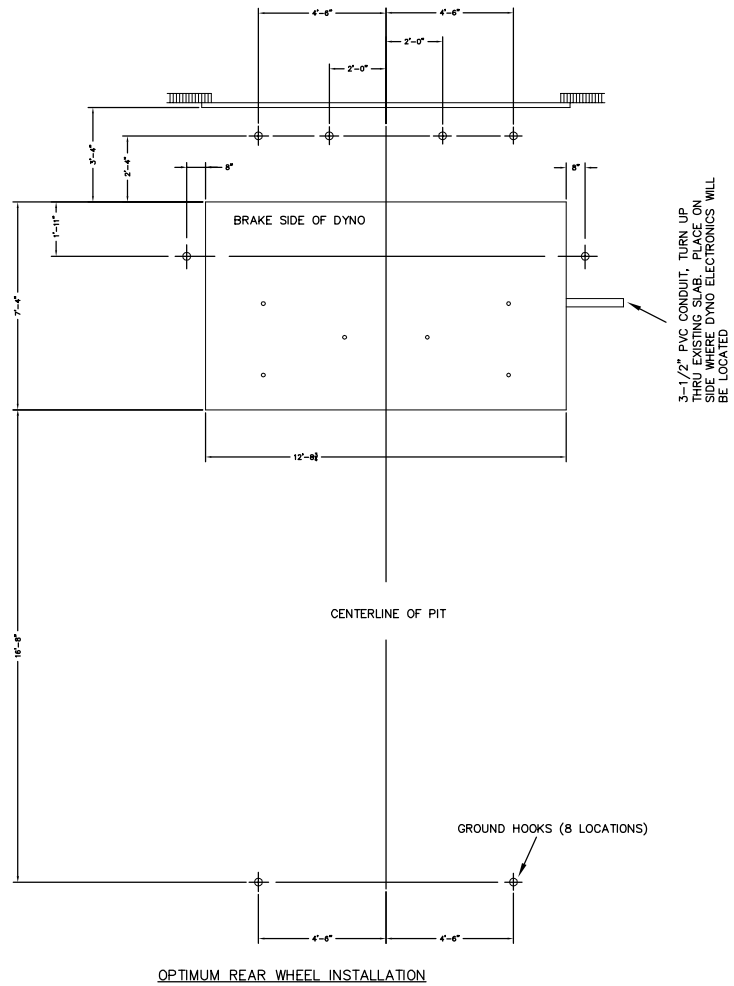
3. CONCRETE  
ALL CONCRETE SHALL BE READY MIX, HAVE A MINIMUM COMPRESSIVE STRENGTH OF 2800 PSI @ 28 DAYS AND HAVE A MINIMUM OF 517 LBS. OF CEMENT PER CUBIC YARD.  
ALL THE CONCRETE WORK SHALL COMPLY WITH THE REQUIREMENTS OF THE ACI BUILDING CODE (ACI 318/LATEST EDITION), THE ACI DETAILING MANUAL (ACI 315/LATEST EDITION), AND THE SPECIFICATIONS FOR STRUCTURAL CONCRETE FOR BUILDINGS (ACI 301/LATEST EDITION).  
ALL REINFORCING STEEL SHALL BE MANUFACTURED FROM HIGH STRENGTH BILLET STEEL CONFORMING TO ASTM DESIGNATION A 615 GRADE 80, SPLICES TO LAP MIN 25". CONCRETE COVER MIN. 3" AGAINST EARTH @ SLAB.  
THE PIT WALLS CAN BE CONSTRUCTED FROM MASONRY BRICK AS ALWAYS CONSULT YOUR CONTRACTOR TO ENSURE THE WALLS WILL STILL MEET THE CODES AND STRUCTURAL STANDARDS.
4. MASONRY  
MASONRY UNITS SHALL BE ASTM C 90 GRADE N. ALL MORTAR SHALL BE TYPE S (OR TYPE M) IN ACCORDANCE WITH ASTM SPECIFICATION C270.  
PROVIDE HOT DIPPED GALVANIZED TRUSS TYPE HORIZONTAL REINFORCEMENT (MIN 9 GA.) AT 16" ON CENTER VERTICAL IN ALL MASONRY WALLS. PROVIDE DOVE TAIL SLOT ANCHORS AT CONCRETE COLUMNS.

MATERIAL:	N/A	<b>DYNOJET RESEARCH</b> 200 ARDEN DRIVE, BELGRADE MT 59714	
FINISH:	N/A		
UNLESS OTHERWISE SPECIFIED: TOLERANCES		WIDE AUTO DYNAMOMETER FINISHED PIT DIMENSIONS	
DECIMAL	FRACTIONAL		
X.XX ± 0.01	± 1/16		
X.XXX ± 0.005	ANGULAR	SIZE PART NO. D 98219110	
± 5"			
DO NOT SCALE THIS DRAWING		REV 01	
CREATED:	CTS 05/01/01	SCALE: NONE	RELEASE DATE:
LAST UPDATE:	CTS 09/21/01	SHEET 1 OF 2	
DESIGNED:	JFE	APPROVED:	

ALL IDEAS, DESIGNS, ARRANGEMENTS AND PLANS INDICATED OR REPRESENTED BY THIS DRAWING ARE OWNED BY DYNOJET RESEARCH, INC. AND WERE CREATED, EVOLVED AND DEVELOPED FOR USE ON AND IN CONNECTION WITH THE SPECIFIED PROJECT. NONE OF SUCH IDEAS, DESIGNS, ARRANGEMENTS OR PLANS SHALL BE USED BY OR DISCLOSED TO ANY PERSON, FIRM OR CORPORATION FOR ANY PURPOSE WHATSOEVER WITHOUT THE WRITTEN PERMISSION OF DYNOJET RESEARCH, INC.

- NOTES, UNLESS OTHERWISE SPECIFIED:
1. ALL DIMENSIONS ARE IN DECIMAL INCHES.
  2. REMOVE ALL BURRS & SHARP EDGES.
  3. REMOVE ALL TOOLING MARKS.
  4. DIMENSIONS & TOLERANCES SHALL BE HELD AFTER PLATING OR FINISH.

REVISIONS				
ECR#	REV	DESCRIPTION	DATE	APPROVED



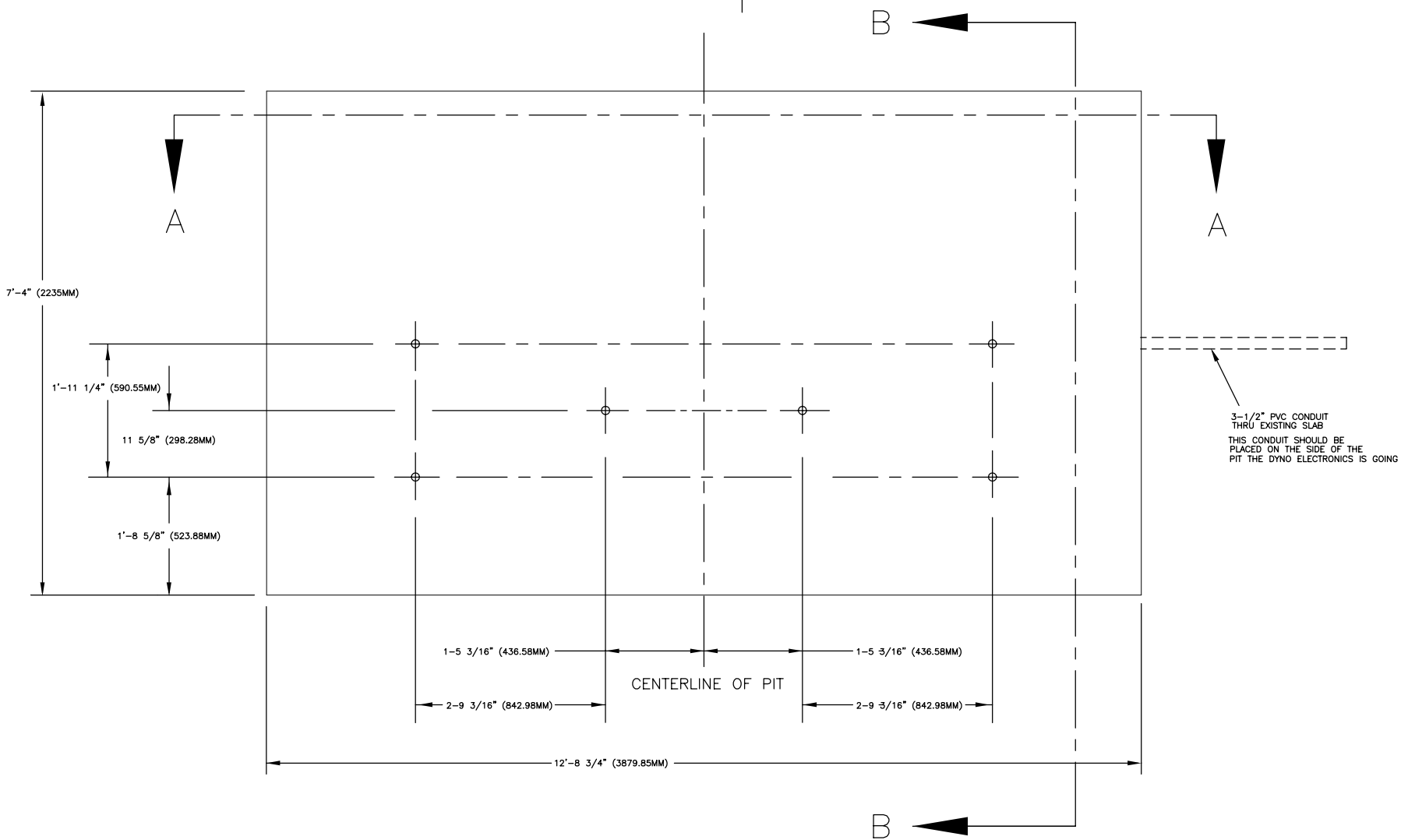
THE TWO DYNO LOCATIONS SHOWN ABOVE ARE COMMONLY USED. IF NEITHER OF THESE CONFIGURATIONS WILL WORK FOR YOUR SITUATION PLEASE CONTACT DYNOJET. DYNOJET CAN HELP IN THE OPTIMUM LAYOUT FOR YOUR SITUATION AND NEEDS. MAKE SURE WHEN INSTALLING THE GROUND HOOKS, THE HOOK SWIVELS UP AND DOWN TOWARDS THE DYNO, THUS THE HOOKS ON EACH SIDE OF THE DYNO ARE TURNED 90° COMPARED TO THE HOOKS IN FRONT AND BACK OF THE DYNO.

MATERIAL:	N/A
FINISH:	N/A
UNLESS OTHERWISE SPECIFIED:	TOLERANCES
DECIMAL	FRACTIONAL
X.XX ± 0.01	± 1/16
X.XXX ± 0.005	ANGULAR
	± 5°
DO NOT SCALE THIS DRAWING	
CREATED:	CTS 05/01/01
LAST UPDATE:	XXX X/XX/XX
DESIGNED:	XXX
APPROVED:	

<b>DYNOJET RESEARCH</b>	
200 ARDEN DRIVE, BELGRADE MT 59714	
WIDE AUTO DYNAMOMETER DYNO LOCATION GUIDE	
SIZE	PART NO.
D	98219110
REV	01
SCALE: X:X	RELEASE DATE:
	SHEET 1 OF 1

ALL IDEAS, DESIGNS, ARRANGEMENTS AND PLANS INDICATED OR REPRESENTED BY THIS DRAWING ARE OWNED BY DYNOJET RESEARCH, INC. AND WERE CREATED, EVOLVED AND DEVELOPED FOR USE ON AND IN CONNECTION WITH THE SPECIFIED PROJECT. NONE OF SUCH IDEAS, DESIGNS, ARRANGEMENTS OR PLANS SHALL BE USED BY OR DISCLOSED TO ANY PERSON, FIRM OR CORPORATION FOR ANY PURPOSE WHATSOEVER WITHOUT THE WRITTEN PERMISSION OF DYNOJET RESEARCH, INC.

REVISIONS				
ECR#	REV	DESCRIPTION	DATE	APPROVED



3-1/2" PVC CONDUIT  
THRU EXISTING SLAB  
THIS CONDUIT SHOULD BE  
PLACED ON THE SIDE OF THE  
PIT THE DYNO ELECTRONICS IS GOING

TOP VIEW OF PIT

MATERIAL: N/A	
FINISH: N/A	
UNLESS OTHERWISE SPECIFIED: TOLERANCES	
DECIMAL X.XX ± 0.01 X.XXX ± 0.005	FRACTIONAL ± 1/16 ANGULAR ± 5°
DO NOT SCALE THIS DRAWING	
CREATED: CTS	04/04/02
LAST UPDATE: XXX	X/XX/XX
DESIGNED: XXX	
APPROVED: _____	

**DYNOJET RESEARCH**

200 ARDEN DRIVE, BELGRADE MT 59714

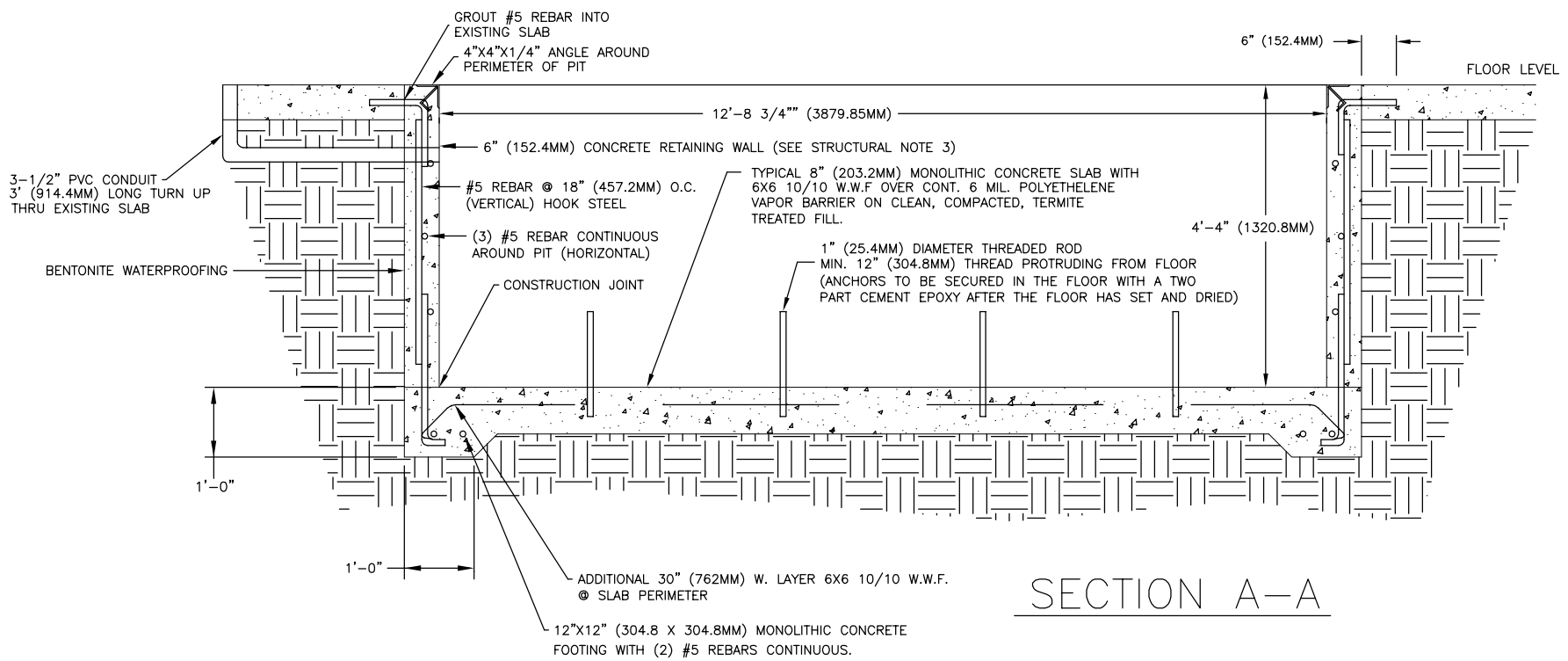
PIT DIMENSIONS  
WIDE AUTO DYNAMOMETER

ALL IDEAS, DESIGNS, ARRANGEMENTS AND PLANS INDICATED OR REPRESENTED BY THIS DRAWING ARE OWNED BY DYNOJET RESEARCH INC. AND WERE CREATED, EVOLVED AND DEVELOPED FOR USE ON AND IN CONNECTION WITH THE SPECIFIED PROJECT. NONE SUCH IDEAS, DESIGNS, ARRANGEMENTS OR PLANS SHALL BE USED BY OR DISCLOSED TO ANY PERSON, FIRM, OR CORPORATION FOR ANY PURPOSE WHATSOEVER WITHOUT THE WRITTEN PERMISSION OF DYNOJET RESEARCH, INC.

DYNOJET RESEARCH, INC.

SIZE A	PART NO. WIDEPIT	REV C
SCALE: NONE	RELEASE DATE:	SHEET 1 OF 4

REVISIONS				
ECR#	REV	DESCRIPTION	DATE	APPROVED



SECTION A-A

MATERIAL:	N/A
FINISH:	N/A
UNLESS OTHERWISE SPECIFIED: TOLERANCES	
DECIMAL	FRACTIONAL
X.XX ± 0.01	± 1/16
X.XXX ± 0.005	ANGULAR ± 5°
DO NOT SCALE THIS DRAWING	
CREATED:	CTS 04/04/02
LAST UPDATE:	XXX X/XX/XX
DESIGNED:	XXX
APPROVED:	

DYNOJET RESEARCH

200 ARDEN DRIVE, BELGRADE MT 59714

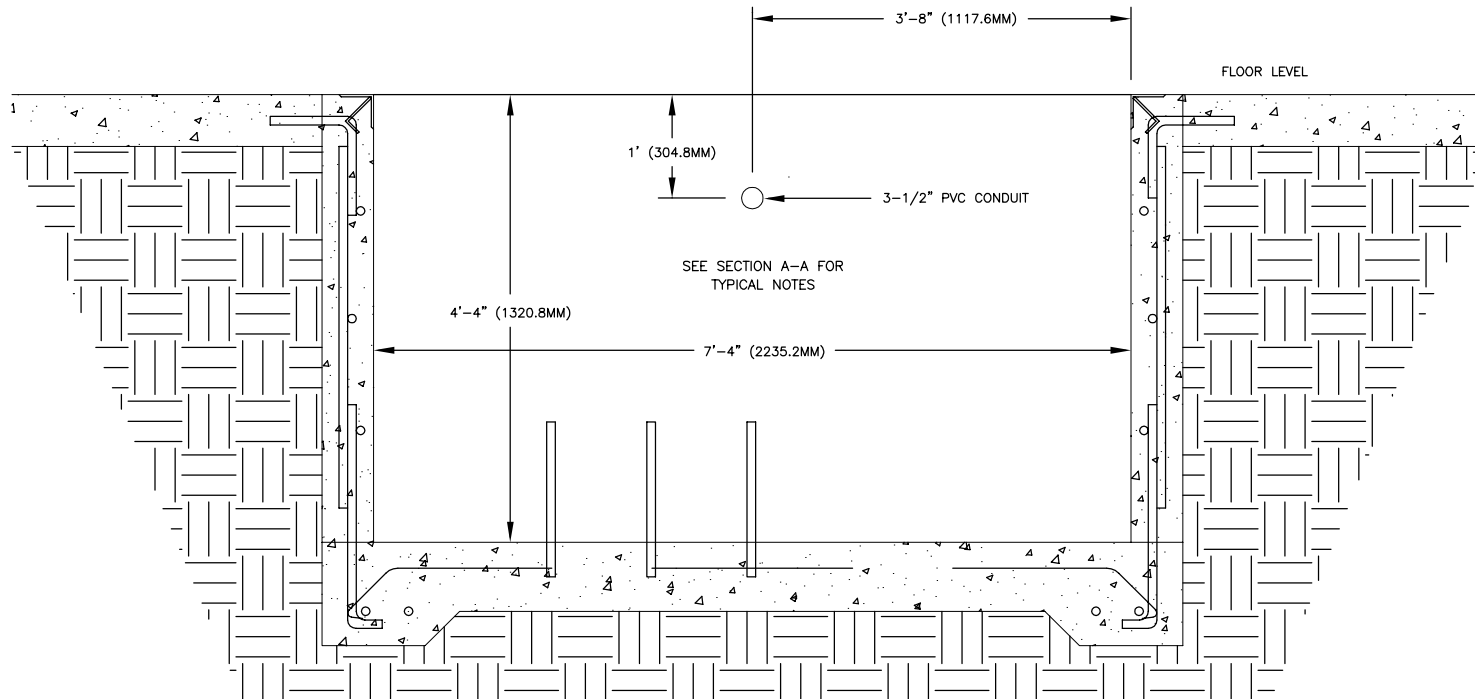
PIT DIMENSIONS – SECTION A  
WIDE AUTO DYNAMOMETER

ALL IDEAS, DESIGNS, ARRANGEMENTS AND PLANS INDICATED OR REPRESENTED BY THIS DRAWING ARE OWNED BY DYNOJET RESEARCH INC. AND WERE CREATED, EVOLVED AND DEVELOPED FOR USE ON AND IN CONNECTION WITH THE SPECIFIED PROJECT. NONE SUCH IDEAS, DESIGNS, ARRANGEMENTS OR PLANS SHALL BE USED BY OR DISCLOSED TO ANY PERSON, FIRM, OR CORPORATION FOR ANY PURPOSE WHATSOEVER WITHOUT THE WRITTEN PERMISSION OF DYNOJET RESEARCH, INC.

DYNOJET RESEARCH, INC.

SIZE	PART NO.	REV
A	WIDEPIT	C
SCALE: NONE	RELEASE DATE:	SHEET 2 OF 4

REVISIONS				
ECR#	REV	DESCRIPTION	DATE	APPROVED



SECTION B-B

MATERIAL:	N/A			<b>DYNOJET RESEARCH</b> 200 ARDEN DRIVE, BELGRADE MT 59714
FINISH:	N/A			
UNLESS OTHERWISE SPECIFIED: TOLERANCES				PIT DIMENSIONS – SECTION B WIDE AUTO DYNAMOMETER
DECIMAL	FRACTIONAL			
X.XX ± 0.01	± 1/16			
X.XXX ± 0.005	ANGULAR ± 5°			
DO NOT SCALE THIS DRAWING				
CREATED:	CTS	04/04/02		
LAST UPDATE:	XXX	X/XX/XX		
DESIGNED:	XXX			
APPROVED:				
SIZE		PART NO.		REV
A		WIDEPIT		C
SCALE: NONE		RELEASE DATE:		SHEET 3 OF 4

ALL IDEAS, DESIGNS, ARRANGEMENTS AND PLANS INDICATED OR REPRESENTED BY THIS DRAWING ARE OWNED BY DYNOJET RESEARCH INC. AND WERE CREATED, EVOLVED AND DEVELOPED FOR USE ON AND IN CONNECTION WITH THE SPECIFIED PROJECT. NONE SUCH IDEAS, DESIGNS, ARRANGEMENTS OR PLANS SHALL BE USED BY OR DISCLOSED TO ANY PERSON, FIRM, OR CORPORATION FOR ANY PURPOSE WHATSOEVER WITHOUT THE WRITTEN PERMISSION OF DYNOJET RESEARCH, INC..

DYNOJET RESEARCH, INC.

REVISIONS				
ECR#	REV	DESCRIPTION	DATE	APPROVED

**NOTES:**

- ALL DIMENSIONS ARE NOMINAL TO FACE OF MASONRY OR TO FACE OF METAL STUD.
- ALL WORK SHALL BE IN ACCORDANCE WITH LOCAL AND STATE AND OR ANY OTHER GOVERNING CODE REQUIREMENTS.
- VERIFY ALL UNDERGROUND UTILITIES BEFORE EXCAVATION.

**STRUCTURAL NOTES**

- CODES AND STANDARDS  
  
THE PROJECT WAS DESIGNED IN ACCORDANCE WITH THE STANDARD BUILDING CODE 1991 EDITION.
- FOUNDATION  
  
ALL SITE PREPARATION AND EXCAVATION WORK IS TO BE PERFORMED IN STRICT ACCORDANCE WITH THE RECOMMENENDATIONS ON SOILS AND FOUNDATIONS INVESTIGATION PREPARED BY AN APPROVED TESTING LABORATORY PROIR TO FOUNDATION WORK.  
  
BOTTOM OF FOOTINGS TO BEAR ON SOIL CAPABLE OF SAFELY SUPPORTING 2500 PSF.  
  
SOILS SUPPORTING ALL FOOTINGS MUST BE INSPECTED AND APPROVED BY A REGISTERED SOILS ENGINEER BEFORE COMMENCING WORK. APPROVAL IN WRITING MUST INDICATE THE SOIL IS ADEQUATE TO SAFELY SUSTAIN SPECIFIED SOIL BEARING PRESSURE.

**STRUCTURAL NOTES:**

- CONCRETE  
  
ALL CONCRETE SHALL BE READY MIX, HAVE A MINIMUM COMPRESSIVE STRENGTH OF 2800 PSI @ 28 DAYS AND HAVE A MINIMUM OF 517 LBS. OF CEMENT PER CUBIC YARD.  
  
ALL THE CONCRETE WORK SHALL COMPLY WITH THE REQUIREMENTS OF THE ACI BUILDING CODE (ACI 318/LATEST EDITION), THE ACI DETAILING MANUAL (ACI 315/LATEST EDITION), AND THE SPECIFICATIONS FOR STRUCTURAL CONCRETE FOR BUILDINGS (ACI 301/LATEST EDITION)  
  
ALL REINFORCING STEEL SHALL BE MANUFACTURED FROM HIGH STRENGTH BILLET STEEL CONFORMING TO ASTM DESIGNATION A 615 GRADE 60. SPLICES TO LAP MIN 25". CONCRETE COVER MIN. 3" AGAINST EARTH @ SLAB  
  
THE PIT WALLS CAN BE CONSTRUCTED FROM MASONRY BRICK AS ALWAYS CONSULT YOUR CONTRACTOR TO ENSURE THE WALLS WILL STILL MEET THE CODES AND STRUCTURAL STANDARDS
- MASONRY  
  
MASONRY UNITS SHALL BE ASTM C 90 GRADE N. ALL MORTAR SHALL BE TYPE S (OR TYPE M) IN ACCORDANCE WITH ASTM SPECIFICATION C270.  
  
PROVIDE HOT DIPPED GALVANIZED TRUSS TYPE HORIZONTAL REINFORCEMENT (MIN 9 GA.) AT 16" ON CENTER VERTICFAL IN ALL MASONRY WALLS. PROVIDE DOVE TAIL SLOT ANCHORS AT CONCRETE COLUMNS.

MATERIAL: N/A		<b>DYNOJET RESEARCH</b> 200 ARDEN DRIVE, BELGRADE MT 59714		
FINISH: N/A				
UNLESS OTHERWISE SPECIFIED: TOLERANCES DECIMAL                      FRACTIONAL X.XX ± 0.01                      ± 1/16 X.XXX ± 0.005                      ANGULAR ± 5° DO NOT SCALE THIS DRAWING				
CREATED: CTS	04/04/02	PIT DIMENSIONS – NOTES WIDE AUTO DYNAMOMETER		
LAST UPDATE: XXX	X/XX/XX	SIZE A	PART NO. WIDEPIT	REV C
DESIGNED: XXX		APPROVED:	SCALE: NONE	RELEASE DATE:
		SHEET 4 OF 4		

ALL IDEAS, DESIGNS, ARRANGEMENTS AND PLANS INDICATED OR REPRESENTED BY THIS DRAWING ARE OWNED BY DYNOJET RESEARCH INC. AND WERE CREATED, EVOLVED AND DEVELOPED FOR USE ON AND IN CONNECTION WITH THE SPECIFIED PROJECT. NONE SUCH IDEAS, DESIGNS, ARRANGEMENTS OR PLANS SHALL BE USED BY OR DISCLOSED TO ANY PERSON, FIRM, OR CORPORATION FOR ANY PURPOSE WHATSOEVER WITHOUT THE WRITTEN PERMISSION OF DYNOJET RESEARCH, INC..                      DYNOJET RESEARCH, INC.