

NOTES, UNLESS OTHERWISE SPECIFIED

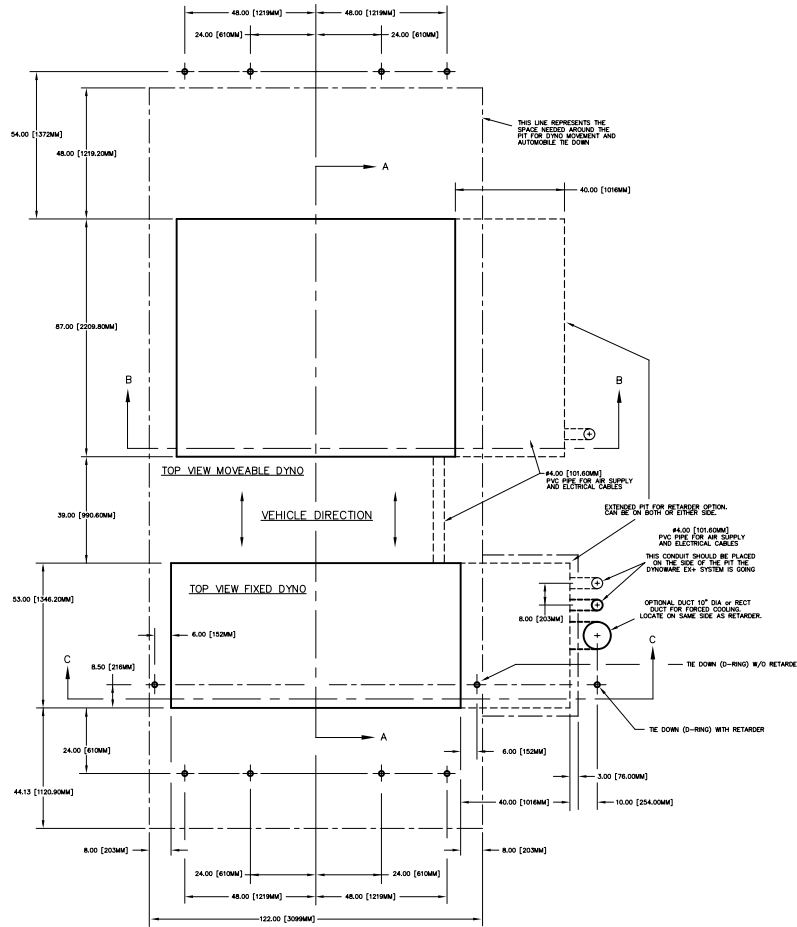
1. ALL DIMENSIONS ARE IN DECIMAL INCHES.

NOTES:

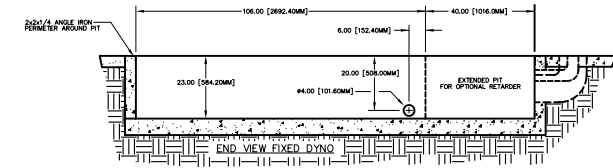
1. ALL DIMENSIONS ARE NOMINAL TO FACE OF MASONRY OR TO FACE OF METAL STUD.
2. ALL WORK SHALL BE IN ACCORDANCE WITH LOCAL AND STATE AND OR ANY OTHER GOVERNING CODE REQUIREMENTS.
3. VERIFY ALL UNDERGROUND UTILITIES BEFORE EXCAVATION.

STRUCTURAL NOTES

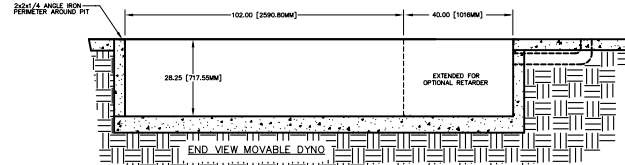
1. CODES AND STANDARDS  
THE PROJECT WAS DESIGNED IN ACCORDANCE WITH THE STANDARD BUILDING CODE 1991 EDITION.
2. FOUNDATION  
ALL SITE PREPARATION AND EXCAVATION WORK IS TO BE PERFORMED IN STRICT ACCORDANCE WITH THE RECOMMENDATIONS ON SOILS AND FOUNDATIONS INVESTIGATION PREPARED BY AN APPROVED TESTING LABORATORY PRIOR TO FOUNDATION WORK.  
BOTTOM OF FOOTINGS TO BEAR ON SOIL CAPABLE OF SAFELY SUPPORTING 2000 PSF.  
SOILS SUPPORTING ALL FOOTINGS MUST BE INSPECTED AND APPROVED BY A REGISTERED SOILS ENGINEER BEFORE COMMENCING WORK. APPROVAL IN WRITING MUST INDICATE THE SOIL IS ADEQUATE TO SAFELY SUSTAIN SPECIFIED SOIL BEARING PRESSURE.
3. CONCRETE  
ALL CONCRETE SHALL BE READY MIX, HAVE A MINIMUM COMPRESSIVE STRENGTH OF 2800 PSI @ 28 DAYS AND HAVE A MINIMUM OF 317 LBS. OF CEMENT PER CUBIC YARD.  
ALL THE CONCRETE WORK SHALL COMPLY WITH THE REQUIREMENTS OF THE AC BUILDING CODE (AC 308/LATEST EDITION), THE AC DETAILING MANUAL (AC 308/LATEST EDITION), AND THE SPECIFICATIONS FOR STRUCTURAL CONCRETE FOR BUILDINGS (ACI 307/LATEST EDITION).  
ALL REINFORCING STEEL SHALL BE MANUFACTURED FROM HIGH STRENGTH BULLET STEEL CONFORMING TO ASTM DESIGNATION A 615 GRADE 60. SPLICES TO LAP MIN 25". CONCRETE COVER MIN. 3" AGAINST EARTH @ SLAB.  
THE PIT WALLS CAN BE CONSTRUCTED FROM MASONRY BRICK AS ALWAYS CONSULT YOUR CONTRACTOR TO INSURE THE WALLS WILL STILL MEET THE CODES AND STRUCTURAL STANDARDS.
4. MASONRY  
MASONRY UNITS SHALL BE ASTM C 90 GRADE N. ALL MORTAR SHALL BE TYPE S (OR TYPE M) IN ACCORDANCE WITH ASTM SPECIFICATION C270.  
PROVIDE HOT DIPPED GALVANIZED BRUSH TYPE HORIZONTAL REINFORCEMENT (MIN 9 GAL) AT 16" ON CENTER VERTICAL IN ALL MASONRY WALLS. PROVIDE DOME THE SLOT ANCHORS AT CONCRETE COLUMNS.



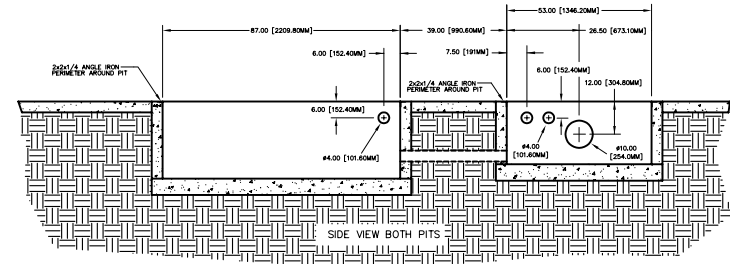
REVISIONS				
ECR#	REV	DESCRIPTION	DATE	APPROVED
1693	04	ADDITION OF 4" PVC BETWEEN PITS	10/09/03	JFE
1981	05	ADDITION OF OPTIONAL RETARDER PIT & RELATED NOTES	05/26/04	JFE
1998	06	UPDATE DRAWING AND SHOW 10" DUCT	06/23/04	JFE
2911	07	SHOW OPTIONAL RETARDER PIT EXTENSION	05/16/06	JFE



SECTION "C-C"



SECTION "B-B"



SECTION "A-A"

MATERIAL:	N/A
FINISH:	N/A
UNLESS OTHERWISE SPECIFIED: TOLERANCES	
DECIMAL	FRACTIONAL
X.XX ± 0.01	± 1/16
X.XXX ± 0.005	ANGULAR
	± 5"
DO NOT SCALE THIS DRAWING	
CREATED:	CTS 10/13/03
LAST UPDATE:	CTS 05/16/06
DESIGNED:	XXX
APPROVED:	

# DYNOJET RESEARCH

200 ARDEN DRIVE, BELGRADE MT 59714

## 224 - 4 WHEEL DRIVE PIT DIMENSIONS

ALL IDEAS, DESIGNS, ARRANGEMENTS AND PLANS INDICATED OR REPRESENTED BY THIS DRAWING ARE OWNED BY DYNOJET RESEARCH INC. AND WERE CREATED, EVOLVED AND DEVELOPED FOR USE ON AND IN CONNECTION WITH THE SPECIFIED PROJECT. NONE SUCH IDEAS, DESIGNS, ARRANGEMENTS OR PLANS SHALL BE USED BY OR DISCLOSED TO ANY PERSON, FIRM, OR CORPORATION FOR ANY PURPOSE WHATSOEVER WITHOUT THE WRITTEN PERMISSION OF DYNOJET RESEARCH, INC.

DYNOJET RESEARCH, INC.

SIZE	PART NO.	REV
A	98219105	07
SCALE: X:X	RELEASE DATE:	SHEET 1 OF 6

NOTES, UNLESS OTHERWISE SPECIFIED

1. ALL DIMENSIONS ARE IN DECIMAL INCHES.

NOTES:

1. ALL DIMENSIONS ARE NOMINAL TO FACE OF MASONRY OR TO FACE OF METAL STUD.
2. ALL WORK SHALL BE IN ACCORDANCE WITH LOCAL AND STATE AND OR ANY OTHER GOVERNING CODE REQUIREMENTS.
3. VERIFY ALL UNDERGROUND UTILITIES BEFORE EXCAVATION.

STRUCTURAL NOTES

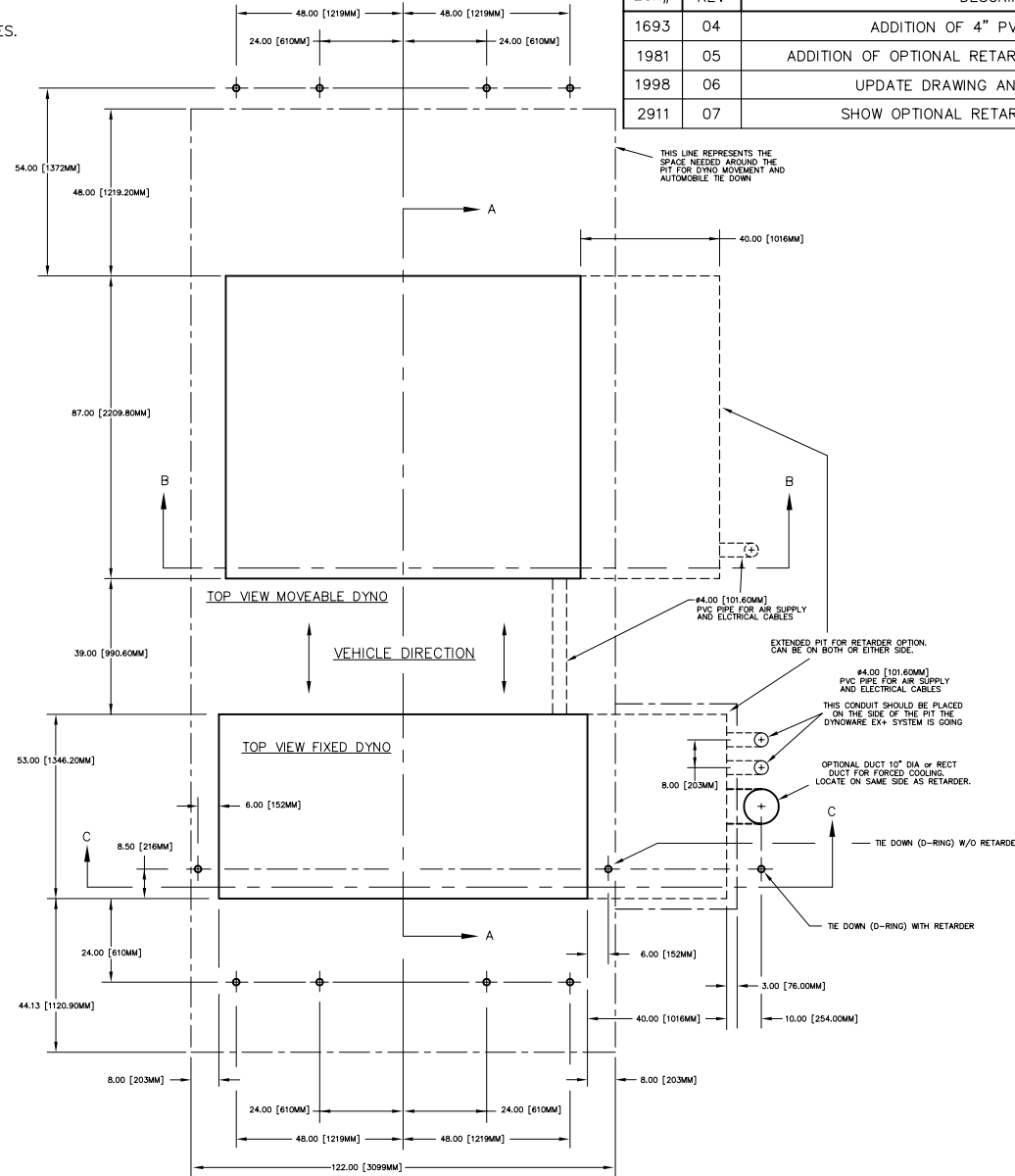
1. CODES AND STANDARDS  
 THE PROJECT WAS DESIGNED IN ACCORDANCE WITH THE STANDARD BUILDING CODE 1991 EDITION.
2. FOUNDATION  
 ALL SITE PREPARATION AND EXCAVATION WORK IS TO BE PERFORMED IN STRICT ACCORDANCE WITH THE RECOMMENDATIONS ON SOILS AND FOUNDATIONS INVESTIGATION PREPARED BY AN APPROVED TESTING LABORATORY PRIOR TO FOUNDATION WORK.  
  
 BOTTOM OF FOOTINGS TO BEAR ON SOIL CAPABLE OF SAFELY SUPPORTING 2500 PSF.  
  
 SOILS SUPPORTING ALL FOOTINGS MUST BE INSPECTED AND APPROVED BY A REGISTERED SOILS ENGINEER BEFORE COMMENCING WORK. APPROVAL IN WRITING MUST INDICATE THE SOIL IS ADEQUATE TO SAFELY SUSTAIN SPECIFIED SOIL BEARING PRESSURE.
3. CONCRETE  
 ALL CONCRETE SHALL BE READY MIX, HAVE A MINIMUM COMPRESSIVE STRENGTH OF 2800 PSI @ 28 DAYS AND HAVE A MINIMUM OF 517 LBS. OF CEMENT PER CUBIC YARD.  
  
 ALL THE CONCRETE WORK SHALL COMPLY WITH THE REQUIREMENTS OF THE ACI BUILDING CODE (ACI 318/LATEST EDITION), THE ACI DETAILING MANUAL (ACI 315/LATEST EDITION), AND THE SPECIFICATIONS FOR STRUCTURAL CONCRETE FOR BUILDINGS (ACI 301/LATEST EDITION)  
  
 ALL REINFORCING STEEL SHALL BE MANUFACTURED FROM HIGH STRENGTH BILLET STEEL CONFORMING TO ASTM DESIGNATION A 615 GRADE 60. SPLICES TO LAP MIN 25". CONCRETE COVER MIN. 3" AGAINST EARTH @ SLAB  
  
 THE PIT WALLS CAN BE CONSTRUCTED FROM MASONARY BRICK AS ALWAYS CONSULT YOUR CONTRACTOR TO ENSURE THE WALLS WILL STILL MEET THE CODES AND STRUCTURAL STANDARDS
4. MASONRY  
 MASONRY UNITS SHALL BE ASTM C 90 GRADE N. ALL MORTAR SHALL BE TYPE S (OR TYPE M) IN ACCORDANCE WITH ASTM SPECIFICATION C270.  
  
 PROVIDE HOT DIPPED GALVANIZED TRUSS TYPE HORIZONTAL REINFORCEMENT (MIN 9 GA.) AT 16" ON CENTER VERTICFAL IN ALL MASONRY WALLS. PROVIDE DOVE TAIL SLOT ANCHORS AT CONCRETE COLUMNS.

REVISIONS				
ECR#	REV	DESCRIPTION	DATE	APPROVED
1693	04	ADDITION OF 4" PVC BETWEEN PITS	10/09/03	JFE
1981	05	ADDITION OF OPTIONAL RETARDER PIT & RELATED NOTES	05/26/04	JFE
1998	06	UPDATE DRAWING AND SHOW 10" DUCT	06/23/04	JFE
2911	07	SHOW OPTIONAL RETARDER PIT EXTENSION	05/16/06	JFE

MATERIAL: N/A		<b>DYNOJET RESEARCH</b> 200 ARDEN DRIVE, BELGRADE MT 59714	
FINISH: N/A			
UNLESS OTHERWISE SPECIFIED: TOLERANCES		<b>224 - 4 WHEEL DRIVE NOTES</b>	
DECIMAL	FRACTIONAL		
X.XX ± 0.01	± 1/16		
X.XXX ± 0.005	ANGULAR ± 5"		
DO NOT SCALE THIS DRAWING			
CREATED:	CTS 10/14/03		
LAST UPDATE:	CTS 05/16/06	SIZE	PART NO.
DESIGNED:	XXX	A	98219105
APPROVED:		SCALE: X:X	RELEASE DATE:
		SHEET 2 OF 6	REV 07

ALL IDEAS, DESIGNS, ARRANGEMENTS AND PLANS INDICATED OR REPRESENTED BY THIS DRAWING ARE OWNED BY DYNOJET RESEARCH INC. AND WERE CREATED, EVOLVED AND DEVELOPED FOR USE ON AND IN CONNECTION WITH THE SPECIFIED PROJECT. NONE SUCH IDEAS, DESIGNS, ARRANGEMENTS OR PLANS SHALL BE USED BY OR DISCLOSED TO ANY PERSON, FIRM, OR CORPORATION FOR ANY PURPOSE WHATSOEVER WITHOUT THE WRITTEN PERMISSION OF DYNOJET RESEARCH, INC. DYNOJET RESEARCH, INC.

NOTES, UNLESS OTHERWISE SPECIFIED  
 1. ALL DIMENSIONS ARE IN DECIMAL INCHES.



REVISIONS				
ECR#	REV	DESCRIPTION	DATE	APPROVED
1693	04	ADDITION OF 4" PVC BETWEEN PITS	10/09/03	JFE
1981	05	ADDITION OF OPTIONAL RETARDER PIT & RELATED NOTES	05/26/04	JFE
1998	06	UPDATE DRAWING AND SHOW 10" DUCT	06/23/04	JFE
2911	07	SHOW OPTIONAL RETARDER PIT EXTENSION	05/16/06	JFE

MATERIAL:	N/A
FINISH:	N/A
UNLESS OTHERWISE SPECIFIED: TOLERANCES	
DECIMAL	FRACTIONAL
X.XX ± 0.01	± 1/16
X.XXX ± 0.005	ANGULAR ± 5°
DO NOT SCALE THIS DRAWING	
CREATED:	CTS 10/14/03
LAST UPDATE:	CTS 05/16/06
DESIGNED:	XXX
APPROVED:	

**DYNOJET RESEARCH**  
 200 ARDEN DRIVE, BELGRADE MT 59714

**224 - 4 WHEEL DRIVE  
 PIT DIMENSIONS**

SIZE	PART NO.	REV
<b>A</b>	<b>98219105</b>	<b>07</b>
SCALE: X:X	RELEASE DATE:	SHEET 3 OF 6

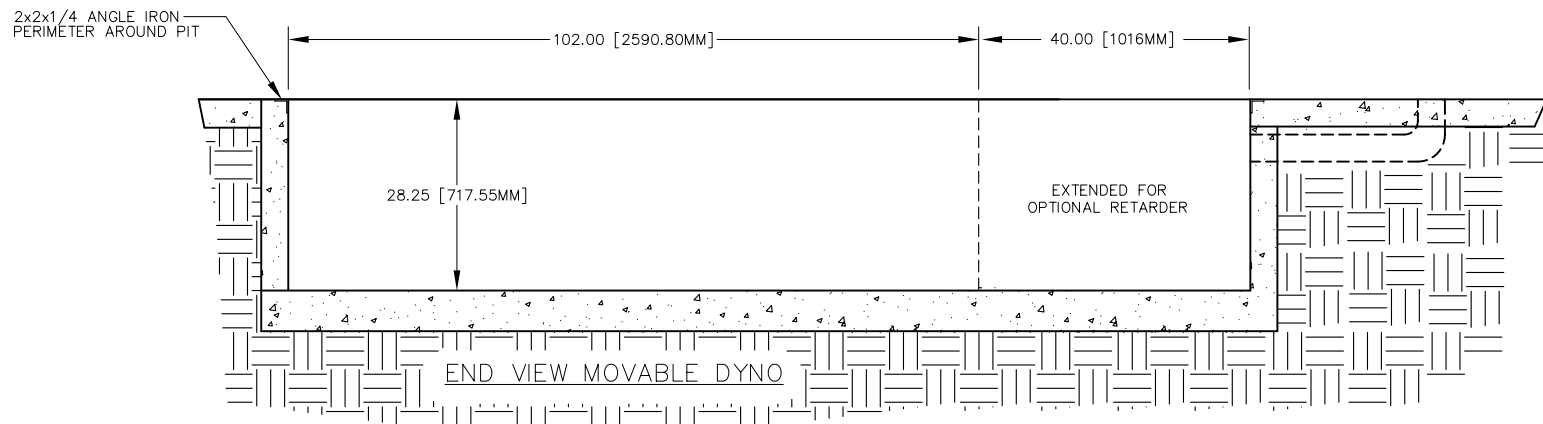
ALL IDEAS, DESIGNS, ARRANGEMENTS AND PLANS INDICATED OR REPRESENTED BY THIS DRAWING ARE OWNED BY DYNOJET RESEARCH INC. AND WERE CREATED, EVOLVED AND DEVELOPED FOR USE ON AND IN CONNECTION WITH THE SPECIFIED PROJECT. NONE SUCH IDEAS, DESIGNS, ARRANGEMENTS OR PLANS SHALL BE USED BY OR DISCLOSED TO ANY PERSON, FIRM, OR CORPORATION FOR ANY PURPOSE WHATSOEVER WITHOUT THE WRITTEN PERMISSION OF DYNOJET RESEARCH, INC. DYNOJET RESEARCH, INC.



NOTES, UNLESS OTHERWISE SPECIFIED

1. ALL DIMENSIONS ARE IN DECIMAL INCHES.

REVISIONS				
ECR#	REV	DESCRIPTION	DATE	APPROVED
1693	04	ADDITION OF 4" PVC BETWEEN PITS	10/09/03	JFE
1981	05	ADDITION OF OPTIONAL RETARDER PIT & RELATED NOTES	05/26/04	JFE
1998	06	UPDATE DRAWING AND SHOW 10" DUCT	06/23/04	JFE
2911	07	SHOW OPTIONAL RETARDER PIT EXTENSION	05/16/06	JFE



SECTION "B-B"

MATERIAL:	N/A	<b>DYNOJET RESEARCH</b> 200 ARDEN DRIVE, BELGRADE MT 59714		
FINISH:	N/A			
UNLESS OTHERWISE SPECIFIED: TOLERANCES		224 - 4 WHEEL DRIVE SECTION B-B		
DECIMAL	FRACTIONAL			
X.XX ± 0.01	± 1/16			
X.XXX ± 0.005	ANGULAR ± 5°			
DO NOT SCALE THIS DRAWING				
CREATED:	CTS 10/14/03			
LAST UPDATE:	CTS 05/16/06	SIZE	PART NO.	REV
DESIGNED:	XXX	A	98219105	07
APPROVED:		SCALE: X:X	RELEASE DATE:	SHEET 5 OF 6

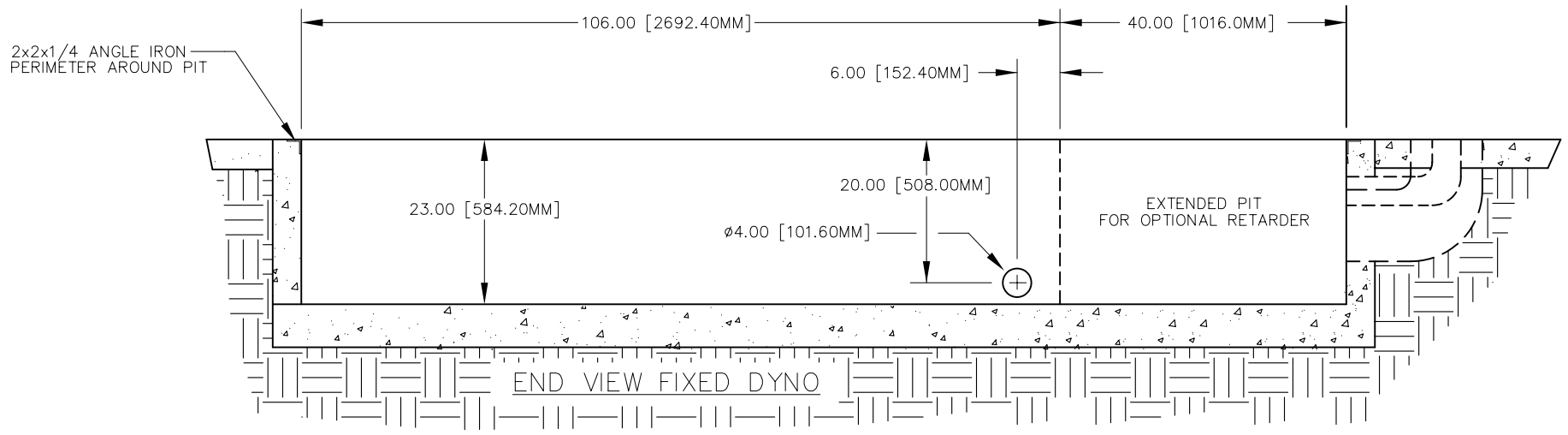
ALL IDEAS, DESIGNS, ARRANGEMENTS AND PLANS INDICATED OR REPRESENTED BY THIS DRAWING ARE OWNED BY DYNOJET RESEARCH INC. AND WERE CREATED, EVOLVED AND DEVELOPED FOR USE ON AND IN CONNECTION WITH THE SPECIFIED PROJECT. NONE SUCH IDEAS, DESIGNS, ARRANGEMENTS OR PLANS SHALL BE USED BY OR DISCLOSED TO ANY PERSON, FIRM, OR CORPORATION FOR ANY PURPOSE WHATSOEVER WITHOUT THE WRITTEN PERMISSION OF DYNOJET RESEARCH, INC..

DYNOJET RESEARCH, INC.

NOTES, UNLESS OTHERWISE SPECIFIED

1. ALL DIMENSIONS ARE IN DECIMAL INCHES.

REVISIONS				
ECR#	REV	DESCRIPTION	DATE	APPROVED
1693	04	ADDITION OF 4" PVC BETWEEN PITS	10/09/03	JFE
1981	05	ADDITION OF OPTIONAL RETARDER PIT & RELATED NOTES	05/26/04	JFE
1998	06	UPDATE DRAWING AND SHOW 10" DUCT	06/23/04	JFE
2911	07	SHOW OPTIONAL RETARDER PIT EXTENSION	05/16/06	JFE



SECTION "C-C"

MATERIAL: N/A		<b>DYNOJET RESEARCH</b> 200 ARDEN DRIVE, BELGRADE MT 59714	
FINISH: N/A			
UNLESS OTHERWISE SPECIFIED: TOLERANCES		224 - 4 WHEEL DRIVE SECTION C-C	
DECIMAL	FRACTIONAL		
X.XX ± 0.01	± 1/16		
X.XXX ± 0.005	ANGULAR ± 5°		
DO NOT SCALE THIS DRAWING			
CREATED: CTS	10/14/03		
LAST UPDATE: CTS	05/16/06	SIZE	PART NO.
DESIGNED: XXX		A	98219105
APPROVED:		SCALE: X:X	RELEASE DATE:
		SHEET 6 OF 6	

ALL IDEAS, DESIGNS, ARRANGEMENTS AND PLANS INDICATED OR REPRESENTED BY THIS DRAWING ARE OWNED BY DYNOJET RESEARCH INC. AND WERE CREATED, EVOLVED AND DEVELOPED FOR USE ON AND IN CONNECTION WITH THE SPECIFIED PROJECT. NONE SUCH IDEAS, DESIGNS, ARRANGEMENTS OR PLANS SHALL BE USED BY OR DISCLOSED TO ANY PERSON, FIRM, OR CORPORATION FOR ANY PURPOSE WHATSOEVER WITHOUT THE WRITTEN PERMISSION OF DYNOJET RESEARCH, INC..

DYNOJET RESEARCH, INC.

REV  
07