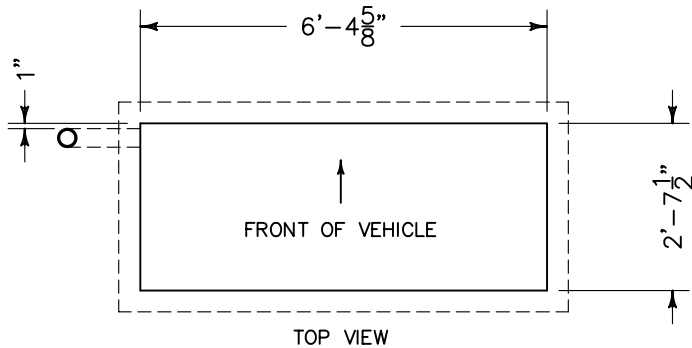
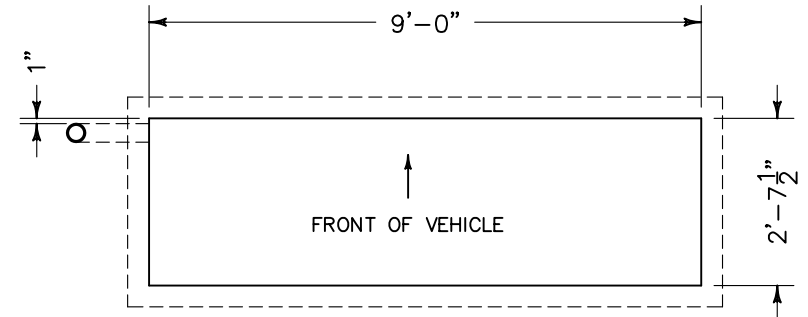


- NOTES, UNLESS OTHERWISE SPECIFIED:
1. ALL DIMENSIONS ARE IN DECIMAL INCHES.
  2. REMOVE ALL BURRS & SHARP EDGES.
  3. REMOVE ALL TOOLING MARKS.
  4. DIMENSIONS & TOLERANCES SHALL BE HELD AFTER PLATING OR FINISH.

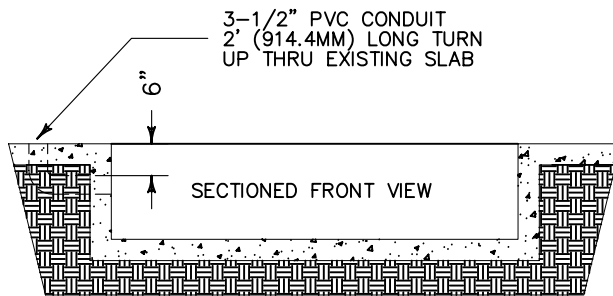
REVISIONS				
ECR#	REV	DESCRIPTION	DATE	APPROVED
	02	LENGTHEN PIT FROM 6'-2" TO 6'-7"	02/02/99	DWK
259	03	CHANGE FROM 6'-7", 2'-4 1/2", 1'-6 1/2" TO	05/25/99	JFE
	04	ADD PIT DIMENSIONS FOR DYNO W/ RETARDER & PVC CONDUIT	6/10/99	JFE
1122	05	ADD EXTRA SPACE IN PIT FOR COOLING RETARDER	10/17/01	JFE
2337	06	REMOVE STEP IN PIT	05/10/05	JFE



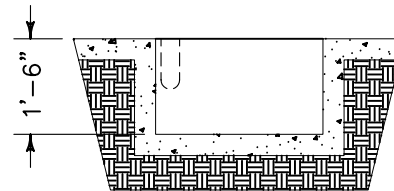
TOP VIEW



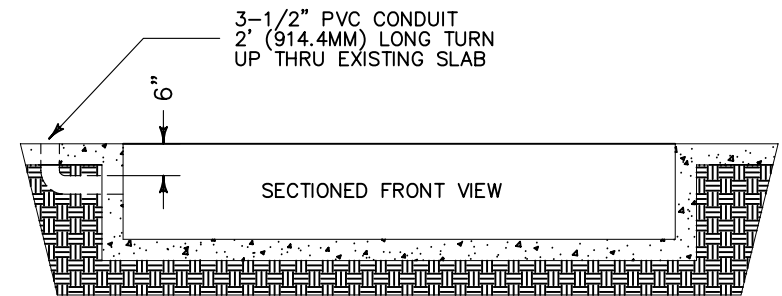
TOP VIEW



KART/ATV DYNAMOMETER  
W/ 51" OR 56" DRUM SPACING



SECTIONED END VIEW



KART/ATV DYNAMOMETER W/ 51" OR 56"  
DRUM SPACING W/ EDDY CURRENT BRAKE

- NOTE:
1. ALL DIMENSIONS ARE NOMINAL TO FACE OF MASONRY.
  2. CONSULT A LOCAL CONTACTOR AS TO PIT FLOOR AND WALL CONFIGURATION. PIT MUST SAFELY SUPPORT 3800 POUNDS.

ALL IDEAS, DESIGNS, ARRANGEMENTS AND PLANS INDICATED OR REPRESENTED BY THIS DRAWING ARE OWNED BY DYNOJET RESEARCH INC. AND WERE CREATED, EVOLVED AND DEVELOPED FOR USE ON AND IN CONNECTION WITH THE SPECIFIED PROJECT. NONE SUCH IDEAS, DESIGNS, ARRANGEMENTS OR PLANS SHALL BE USED BY OR DISCLOSED TO ANY PERSON, FIRM, OR CORPORATION FOR ANY PURPOSE WHATSOEVER WITHOUT THE WRITTEN PERMISSION OF DYNOJET RESEARCH, INC.

MATERIAL: SEE CONTRACTOR		<b>DYNOJET RESEARCH</b> 200 ARDEN DRIVE, BELGRADE MT 59714		
FINISH: N/A				
UNLESS OTHERWISE SPECIFIED: TOLERANCES		PIT DIMENSIONS KART/ATV DYNO		
DECIMAL X.XX ± 0.01	FRACTIONAL ± 1/8			
X.XXX ± 0.005	ANGULAR ± 5°			
DO NOT SCALE THIS DRAWING				
CREATED: JFE	6/10/99	SIZE B	PART NO. 83939001	REV 06
LAST UPDATE: CTS	05/10/05	SCALE: 1:25	RELEASE DATE: 8/12/99	SHEET 1 OF 1
DESIGNED: JFE		APPROVED: JFE		