



DynaJet[®]

POWERSPORT
DYNAMOMETERS
AND TEST EQUIPMENT

2012

THE ORIGINAL GROUND-BREAKING PERFORMANCE DYNO – DYNOJET!

Dynojet is proud to be the originator of real-world chassis dynamometer technology. Until the arrival of Dynojet into the world of chassis dynamometer technology, performance chassis dyno-tuning was a relatively unused service that was out of reach for the typical performance shop, tuner, or enthusiast. Dynojet's quest to find a suitable chassis dynamometer led to the development of its own chassis dyno, which then laid the groundwork for dyno production and sales. Dynojet has a very unique position as the only dyno company that uses its own dynamometers on a daily basis in the development of performance products and dyno technology.

Established in 1972, Dynojet is a Research & Development company, employing over 100 people in Montana, Nevada, Holland, Germany and England. Dynojet Research develops aftermarket performance products and diagnostic tools for the Motorcycle and Automotive industries. Dynojet's extensive product development testing required the use of a Dynamometer. Unable to find a Dynamometer to meet the needs of the Research & Development staff, Dynojet went to the drawing boards and pioneered the first single roller, inertia, chassis Dynamometer for motorcycles in 1989. Shortly thereafter Dynojet developed a computer interface and software package and began selling the first Model 100 Motorcycle Chassis Dynamometer. The Model 100 proved to be affordable, reliable, accurate and above all, consistent. This was the case not only from one measurement to the next, but also from one Dynojet Dynamometer to another, enabling communication and sharing of test data. The success of the Model 100 led to further developments in chassis dynamometer technology culminating with our current Model 250ix Powersports dynamometer.

In the early 1990's, the venerable model 248c Automotive chassis dynamometer was released to widespread acclaim and quickly became the "tool of choice" for the professional tuner. Many Nascar Race Teams adopted the Dynojet 248 with Dynojet eventually becoming the Officially Licensed Dynamometer of NASCAR. Further innovations led to the smaller, more compact design of the 224x dynamometer, and in 2003, the Eddy-Current equipped model 224xLC was released. The modular design of this 224 series was ideal for upgrades, leading to the release of the 424x and 424xLC2 all-wheel drive dynamometers, which build on the proven 224x platform. With the Linx system, Dynojet has once again lead the dyno industry with innovation.

CUSTOMER SUPPORT THAT MATTERS!

Dynojet Dynamometer Technical Support is unique. Unlike other companies who simply sell their equipment – at Dynojet we use ours daily! This is important to dyno owners, because as a leading aftermarket product development company, Dynojet technicians have Real-World experience using the very dyno models they support. Whether it is providing on-track dyno support to top-tier race teams, in-house product development or after-hours personal tuning sessions, Dynojet technicians have the ability to provide data analysis and interpretation in addition to advanced dyno support.

DURABILITY

We build the Dynojet Dynamometer to last. It is a durable, low maintenance instrument. Our reputation and willing technical support are your guarantees that the Dynojet Dynamometer will live up to our promises.

CREDIBILITY

With the Dynojet Dynamometer it is easy to establish credibility for your shop or business. Before and after dyno runs on service or performance work help establish credibility. Today's customer wants to see proof that what he is paying for works.

The biggest names in the industry trust Dynojet as the "Industry Standard" – Names such as: Shelby American, K&N Engineering, Magnaflow Exhaust, Roush Yates Performance, SCT Flash, Graves Yamaha, Harley-Davidson, Yoshimura Suzuki, Powerblock on SpikeTV, and too many to list.

THE WORLD STANDARD

The Dynojet Dynamometer is the most widely recognized chassis dynamometer with more than 6,000 installations in over 60 countries. These installations include OEM motorcycle manufacturers, importers, exhaust manufacturers, tuners, race teams, dealers, service shops, motorcycle and ATV magazines. Dynojet has long term partnerships with industry leading companies worldwide, ensuring local technical support for most of our customers.



GRAVES[®] MOTORSPORTS

CHUCK GRAVES
PRESIDENT

GRAVES MOTORSPORTS
TEAM MONSTER ENERGY - GRAVES YAMAHA

THE DYNOJET DYNO IS A MUST HAVE TOOL FOR EVERY SHOP THAT PERFORMS
DIAGNOSIS OR PERFORMANCE WORK. IN TODAY'S ULTRA COMPETITIVE
BUSINESS AND RACING MARKETS, WE MUST HAVE THE TOOLS TO NOT ONLY
COMPETE, BUT TO EXCEL! TO DO WHAT WE DO AT GRAVES MOTORSPORTS
WOULD BE UNTHINKABLE WITHOUT A DYNOJET DYNO.

TABLE OF CONTENTS

| | |
|---|--------------|
| Inertia Only Dynamometer Models | 4-5 |
| Model 200i | 4 |
| Model 200ix | 5 |
| Load Control Dynamometer Models | 6-9 |
| Model 250i | 6-7 |
| Model 250ix | 8-9 |
| Specialty Dynamometer Models | 10 |
| Model SD12 | 10 |
| Powersports Dynamometer Upgrades | 11-13 |
| Eddy Current Brake | 11 |
| ix Powersports Upgrade | 11 |
| Dynojet DJ-DLM Datalink Module | 12 |
| Optional Hardware | 12-13 |
| Dynoware EX | 14 |
| Dynamometer Software | 15-16 |
| Dynamometer Training and Support | 17-19 |
| Basic Dyno Course | 17 |
| Power Commander Tuning Center | 18 |
| Power Vision Tuning Course | 19 |
| Tuning Link Software | 19 |



CONTACT INFORMATION

E-mail: US - dynosales@dynojet.com
 International - intdynosales@dynojet.com

Phone: Toll Free - 800-992-3525
 Local - 702-399-1423

Fax: US - 702-399-6385

Dynojet

POWERSPORTS DYNAMOMETERS

USED BY TOP RACE TEAMS AND TUNING SHOPS...
DOMESTICALLY



AND INTERNATIONALLY



TAUGHT ON
AT THE TOP SCHOOLS





MODEL 200i SHOWN WITH
OPTIONAL DUAL AXIS FANS

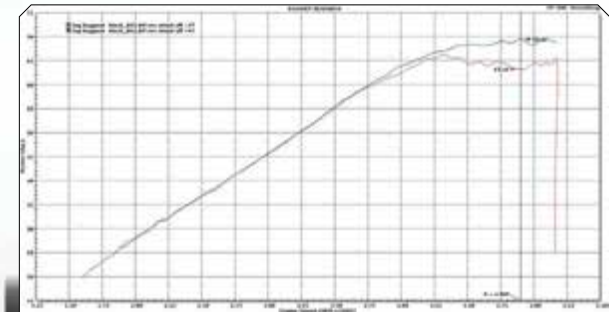
MODEL 200i

MOTORCYCLE

CHASSIS DYNAMOMETER

The Model 200i continues the Dynojet tradition of providing a reliable, repeatable, consistent and easy to use chassis dyno for quick and accurate diagnosing of performance problems. The Model 200i offers an improved operator interface through the use of the integrated control console, new WinPep 7 software and a wider platform for easy loading & unloading. Shop sales, service work and credibility all benefit with a Dynojet chassis dynamometer.

A great feature of the 200i is that it can easily be upgraded to the Model 200ix, 250i or 250ix at any time. This is especially important to new businesses. They can begin with the 200i and upgrade as their business grows.



Dynojet's inertia technology is the industry standard for repeatability and consistency, so you can tune the vehicle and not the dyno!

STANDARD FEATURES AND EQUIPMENT

- » MEASURES UP TO 750HP AND 200MPH
- » SOFTWARE AND HARDWARE TO INTERFACE (PC, MONITOR, AND PRINTER NOT INCLUDED)
- » POWDER COATED CHASSIS WITH WHEELBASE CAPABILITY UP TO 84 INCHES (FROM REAR AXLE TO LEADING EDGE OF FRONT TIRE)
- » INTEGRATED CONTROL PANEL STAND WITH CONSOLE
- » IGNITION WIRE INDUCTIVE TACHOMETER PICKUP LEADS
- » FRONT WHEEL LOCK
- » AUTOMATIC ATMOSPHERIC CONDITIONS MEASUREMENT (ABSOLUTE PRESSURE, AIR TEMP, HUMIDITY)
- » STARTER SYSTEM TO SPIN ROLLER (12V BATTERY REQUIRED)
- » INSTALLATION, OPERATION MANUALS AND SOFTWARE INCLUDED
- » ONE YEAR REPLACEMENT PARTS WARRANTY

ADDITIONAL PIT MODEL STANDARD EQUIPMENT

- » POWER CARRIAGE FOR BUTTON OPERATED WHEELBASE ADJUSTMENT

MODEL 200i SPECIFICATIONS

| | | | | | |
|--|-----------|--------------------|---------------|---------------------|-------------------|
| Maximum Horsepower | 750 HP | Drum Diameter | 18 Inches | Timing Accuracy | +/- 1 microsecond |
| Maximum Speed | 200 MPH | Drum Width | 16.38 Inches | Drum Speed Accuracy | +/- 1/100th MPH |
| Maximum Length | 84 Inches | Drum Weight | 500 LBS | RPM Accuracy | +/- 1/10th RPM |
| (Front of Front wheel to Center of Rear Wheel) | | Drum Concentricity | +/-0.001 Inch | | |

MODEL 200ix

POWERSPORTS

CHASSIS DYNAMOMETER

Dynojet's cutting-edge engineering delivers the precise horsepower measurements a technician needs to make quick and accurate evaluations of engine and drive-train performance. This allows you to maximize your shops potential with increased sales, service efficiency, and shop credibility. The dynos' durable, low-maintenance construction ensures that you will be investing in many years of flawless tuning and troubleshooting.

By eliminating the need for engine removal, the vehicle mounting time is as little as 5 minutes. A technician can then perform a simple test and examine the results right in the shop. Utilizing the Dynojet WinPEP software, the dyno operator can evaluate the entire drive-train condition for the purpose of routine servicing or all-out performance development.



The 200ix dynamometer adds an extra drum and sliding carriage to accommodate ATV's, Trikes, Side-by-Sides, and Motorcycles.



The Powersports Chassis Dynamometer gives you the advanced technology, durability, and accuracy you need, all at an affordable price.

MODEL 200IX SHOWN WITH OPTIONAL POWER CLAMP AND DUAL AXIS FANS

STANDARD FEATURES AND EQUIPMENT

- » MEASURES UP TO 750HP AND 200MPH
- » SOFTWARE AND HARDWARE TO INTERFACE (PC, MONITOR, PRINTER NOT INCLUDED)
- » DUAL PRECISION BALANCED DRUMS, MAIN DRUM WIDTH (16.38"), AUXILIARY DRUM WIDTH (22")
- » DYNAMOMETER CHASSIS, OUTSIDE-TO-OUTSIDE DRUM WIDTHS: OUTSIDE (56") AND INSIDE WIDTH (17.63")
- » IGNITION WIRE INDUCTIVE TACHOMETER PICKUP LEADS

- » AUTOMATIC ATMOSPHERIC CONDITIONS MEASUREMENT (ABSOLUTE PRESSURE, AIR TEMP, HUMIDITY)
- » STARTER SYSTEM TO SPIN ROLLER (12V BATTERY REQUIRED)
- » INSTALLATION, OPERATION MANUALS AND SOFTWARE INCLUDED
- » ONE YEAR REPLACEMENT PARTS WARRANTY

ADDITIONAL PIT MODEL STANDARD EQUIPMENT

- » POWER CARRIAGE FOR BUTTON OPERATED WHEELBASE ADJUSTMENT

MODEL 200IX SPECIFICATIONS

| | | | | | |
|--|-----------|--------------------|---------------|---------------------|-------------------|
| Maximum Horsepower | 750 HP | Drum Diameter | 18 Inches | Timing Accuracy | +/- 1 microsecond |
| Maximum Speed | 200 MPH | Drum Width | 16.38 Inches | Drum Speed Accuracy | +/- 1/100th MPH |
| Maximum Length | 84 Inches | Drum Weight | 500 LBS | RPM Accuracy | +/- 1/10th RPM |
| (Front of Front wheel to Center of Rear Wheel) | | Drum Concentricity | +/-0.001 Inch | | |

TOLL FREE: 1-800-992-3525

MODEL 250i

MOTORCYCLE

LOAD CONTROL DYNAMOMETER

- » CLOSED-LOOP CONTROL OF SPEED OR RPM
- » EASY-TO-USE SOFTWARE, PUSH BUTTON OPERATION
- » TEST VEHICLES AT FULL OR PARTIAL THROTTLE
- » ABSORPTION UNIT CAPABLE OF 858 LB/FT TORQUE
- » OPTIONAL CLOSED-LOOP TORQUE CONTROL MODULE



MODEL 250I SHOWN WITH
OPTIONAL POWER CLAMP DUAL
AXIS FANS AND MONITOR TRAY



JAMIE HANSON

SPEEDS PERFORMANCE PLUS

OUR MOBILE DYNO CENTER IS CUSTOM DESIGNED AROUND DYNOJET'S MODEL 250, WHICH IS WITHOUT QUESTION THE CENTER OF OUR BUSINESS. THIS INDUSTRY STANDARD DYNO IS THE ULTIMATE TOOL FOR PERFORMANCE TUNING AND DIAGNOSTIC TESTING. IT ALLOWS US TO IDENTIFY AREAS OF PERFORMANCE LOSS, TUNE MOTORCYCLES TO ACHIEVE MAXIMUM HORSEPOWER FROM THE STOCK COMPONENTS, AND ADJUST CARBURETION AND FUEL INJECTION WHEN ADDING AFTERMARKET PRODUCTS.



The Dynojet Load Control System was developed through years of experience with over 6,000 dynamometer installations worldwide. The design is easy to operate and provides the function of steady state load control. Dynojet's Load Control System uses the latest in eddy current power absorption technology, which combines with our easy to use software, so any technician can get repeatable, consistent results. The Load Control software provides the technician with the ability to control vehicle RPM or Speed at any throttle opening. Through our exclusive closed-loop software design, the vehicle is automatically held at your pre-determined setting.



WITH THE ADDITION OF THE OPTIONAL TORQUE CELL PACKAGE, THE DYNO HAS THE CAPABILITY OF A MORE COMPLETE RANGE OF TESTS, INCLUDING STEP AND SWEEP TESTS.



THIS IS AN EXAMPLE OF THE "LOAD CONTROL" AND "LOAD TESTING" SYSTEMS MAKE RUN SCREEN. USING THE OPTIONAL TORQUE MODULE, "REAL-TIME" TORQUE CAN BE DISPLAYED.



VANCE & HINES



PAUL LANGLEY
SENIOR VICE-PRESIDENT

VANCE & HINES MOTORSPORTS

CHASSIS-DYNO TESTING & TUNING IS A CRUCIAL PART OF OUR RACE DEVELOPMENT PROGRAM AND WE USE THE INDUSTRY STANDARD - DYNOJET.



TOLL FREE: 1-800-992-3525

STANDARD FEATURES AND EQUIPMENT

- » MEASURES UP TO 750HP AND 200MPH
 - » SOFTWARE AND HARDWARE TO INTERFACE (PC, MONITOR AND PRINTER NOT INCLUDED)
 - » POWDER COATED CHASSIS WITH WHEELBASE CAPABILITY UP TO 84 INCHES (FROM REAR AXLE TO LEADING EDGE OF FRONT TIRE)
 - » EDDY CURRENT LOAD ABSORPTION UNIT
 - » INTEGRATED CONTROL PANEL STAND WITH CONSOLE
 - » IGNITION WIRE INDUCTIVE TACHOMETER PICKUP LEADS
 - » FRONT WHEEL LOCK
 - » AUTOMATIC ATMOSPHERIC CONDITIONS MEASUREMENT (ABSOLUTE PRESSURE, AIR TEMP, HUMIDITY)
 - » STARTER SYSTEM TO SPIN ROLLER (12V BATTERY REQUIRED)
 - » INSTALLATION, OPERATION MANUALS AND SOFTWARE INCLUDED
 - » ONE YEAR REPLACEMENT PARTS WARRANTY
- ADDITIONAL PIT MODEL STANDARD EQUIPMENT**
- » POWER CARRIAGE FOR BUTTON OPERATED WHEELBASE ADJUSTMENT

MODEL 250I SPECIFICATIONS

| | | | |
|--------------------|---|---------------------|-------------------|
| Maximum Horsepower | 750 HP | Drum Width | 16.38 Inches |
| Maximum Speed | 200 MPH | Drum Weight | 500 LBS |
| Maximum Length | 84 Inches(Front of Front wheel to Center of Rear Wheel) | Drum Concentricity | +/-0.001 Inch |
| Drum Diameter | 18 Inches | Timing Accuracy | +/- 1 microsecond |
| | | Drum Speed Accuracy | +/- 1/100th MPH |

The Dynojet 250ix provides the ultimate in powersports dyno tuning/testing capability. With 61" total drum width, the 250ix can handle UTV's, ATV's, karts, trikes and motorcycles. Available for above-ground or pit installation.

The Powersports Chassis Dynamometer gives you the advanced technology, durability, and accuracy you need, all at an affordable price.



THE 250IX DYNAMOMETER ADDS AN EXTRA DRUM AND SLIDING CARRIAGE TO ACCOMMODATE ATV'S, TRIKES, SIDE-BY-SIDES, AND MOTORCYCLES.

STANDARD FEATURES AND EQUIPMENT

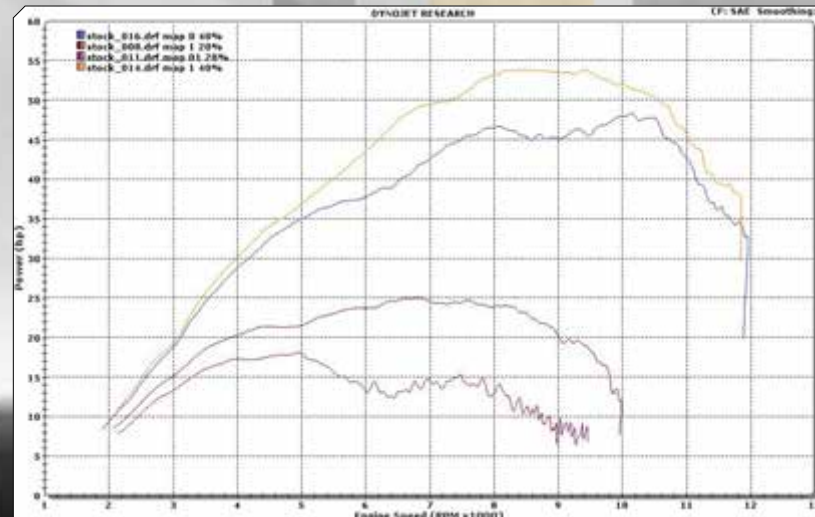
- » MEASURES UP TO 750HP AND 200MPH
- » SOFTWARE AND HARDWARE TO INTERFACE (PC, MONITOR, PRINTER NOT INCLUDED)
- » DUAL PRECISION BALANCED DRUMS, MAIN DRUM WIDTH (16.38"), AUXILIARY DRUM WIDTH (22")
- » DYNAMOMETER CHASSIS, OUTSIDE-TO-OUTSIDE DRUM WIDTHS: MODEL 250IX (61") AND INSIDE WIDTH (17.63")
- » IGNITION WIRE INDUCTIVE TACHOMETER PICKUP LEADS
- » AUTOMATIC ATMOSPHERIC CONDITIONS MEASUREMENT (ABSOLUTE PRESSURE, AIR TEMP, HUMIDITY)
- » STARTER SYSTEM TO SPIN ROLLER (12V BATTERY REQUIRED)
- » INSTALLATION, OPERATION MANUALS AND SOFTWARE INCLUDED
- » ONE YEAR REPLACEMENT PARTS WARRANTY

ADDITIONAL PIT MODEL STANDARD EQUIPMENT

- » POWER CARRIAGE FOR BUTTON OPERATED WHEELBASE ADJUSTMENT

MODEL 250IX SPECIFICATIONS

| | | | |
|--|--------------|---------------------|-------------------|
| Maximum Horsepower | 750 HP | Drum Weight | 500 LBS |
| Maximum Speed | 200 MPH | Drum Concentricity | +/- 0.001 Inch |
| Maximum Length 84 Inches (Front of Front wheel to Center of Rear Wheel) | | Timing Accuracy : | +/- 1 microsecond |
| Drum Diameter | 18 Inches | Drum Speed Accuracy | +/- 1/100th MPH |
| Drum Width | 16.38 Inches | RPM Accuracy | +/- 1/10th RPM |



DYNOJET'S EASY TO USE LOAD-CONTROL SYSTEM SIMPLIFIES PART THROTTLE TUNING

**“ MIKE DANIELS
DANIELS PERFORMANCE**
DANIELS PERFORMANCE, LEADER IN HIGH PERFORMANCE HARLEY-DAVIDSON® EFI TRAINING WITH OVER 30 YEARS OF EXPERIENCE, RECOMMENDS AND USES DYNOJET DYNAMOMETERS FOR THE TRAINING THEY PROVIDE FOR THE HARLEY-DAVIDSON UNIVERSITY®. ”

WWW.DYNOJET.COM

MODEL 250ix

POWERSPORTS

LOAD CONTROL DYNAMOMETER

Dynojets cutting-edge engineering delivers the precise horsepower measurements a technician needs to make quick and accurate evaluations of engine and drive-train performance. This allows you to maximize your shops potential with increased sales, service efficiency, and shop credibility. The dynos' durable, low-maintenance construction ensures that you will be investing in many years of flawless tuning and troubleshooting.

POWERSPORTS
LOAD CONTROL
DYNAMOMETERS



RICHARD STANBOLI
ATTACK RACING

THE DYNOJET DYNAMOMETER HAS BEEN THE BASIS FOR OUR COMPETITIVENESS IN AMA RACING. WE ARE CONSISTENTLY AT THE TOP OF THE SPEED CHARTS IN BOTH DAYTONA SPORT BIKE AND SUPERBIKE. AS SEEN AT DAYTONA, OUR RIDERS CAN EASILY PASS ON STRAIGHTS AND ALL THANKS TO THE RELIABLE, REPEATABLE AND CAPABLE DYNOJET DYNAMOMETER. IT IS AN IMPORTANT TOOL FOR NOT ONLY OUR RACING TEAM BUT ALSO OUR SERVICE DEPARTMENT, THE ATTACK TUNING CENTER.



MODEL 250IX SHOWN WITH OPTIONAL POWER CARRIAGE/
CLAMP, DUAL AXIS FANS, MONITOR TRAY AND IX RAMP

TOLL FREE: 1-800-992-3525

The SD12 has a clever fold-up design with rollers, enabling it to be easily moved for use and storage, maximizing space inside the work shop.

The SD12 comes with a folding ramp and foot activated brake as standard features and can accommodate wheelbases from 60 to 74 inches. The SD12 uses our proven WINPEP 7 software and Dynoware EX+ electronics for accurate and repeatable measurement of horsepower, torque, and speed. The Dynojet Air/Fuel Ratio Monitor can be used with the SD12.



SD12

SCOOTER DYNAMOMETER

The SD12 fulfills the need for a dynamometer designed for the large and ever growing scooter market.

The SD12 has a clever fold-up design with rollers, enabling it to be easily moved for use and storage, maximizing space inside the work shop.

MODEL SD12 SPECIFICATIONS

| | | | |
|--------------------------|---------------------|--------------------------------|--|
| Max Power: | 25kW (33.5hp) | Total height: | |
| Max Torque: | 45Nm (33.5lb-ft) | Folded | 83in / 211cm |
| Max Speed: | 175 km/hr (109 mph) | Unfolded | 24in / 61cm) |
| Total Length : | | Weight: | 437lb / 198.22kg (DYNAMOMETER ONLY) |
| Unfolded with ramp down: | 132in / 335cm | Minimum and | |
| Unfolded with ramp up: | 99in / 251cm | Maximum Wheelbase: | 60-74in / 152-188 cm |
| Folded: | 21in / 533cm | Brake type: | |
| Total width: | | Spring Applied Mechanical Band | (MANUALLY FOOT OPERATED) |
| Folded: | 24in / 61cm | Power requirements: | 110-220VAC (DOMESTIC OR EU POWER) |
| Unfolded: | 34in / 86cm | | |



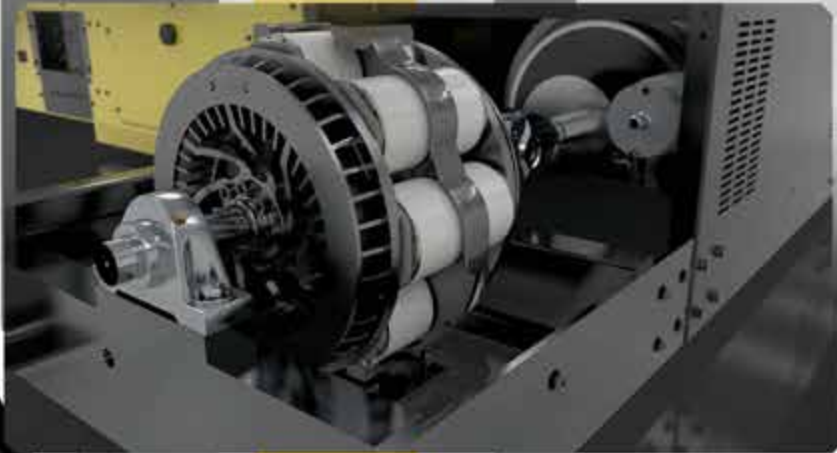
“
RICHARD BRUCKNER
CEO - HIGH-GAIN TUNING
 AFTER SEARCHING FOR A SCOOTER SPECIFIC DYNO I WAS COMING UP
 EMPTY HANDED UNTIL SOMEONE ON A FORUM POINTED ME TO THE NEW DYNOJET SD12
 RELEASE. AFTER SEEING THE FIRST PIC OF IT FOLDED UP I WAS SOLD. I ALREADY KNEW THE
 GREAT DYNOJET HISTORY AND SINCE ALL THE MODULES ARE THE SAME IT WAS A HANDS
 DOWN DECISION. WAREHOUSE SPACE ISN'T CHEAP AND TO BE PERMANENTLY
 TAKING UP SQUARE FOOTAGE WAS NOT AN OPTION. 798 DYNO RUNS LATER
 AND IT IS PERFORMING AS FLAWLESS AS THE DAY IT WAS SET-UP. WHEN
 EXTREME ACCURACY IS NECESSARY TO FIND EVERY TENTH OF A HORSE
 POWER IN THESE LITTLE ENGINES, THE SD12 IS THE BEST TOOL AVAILABLE.



EDDY CURRENT LOAD ABSORPTION UNIT

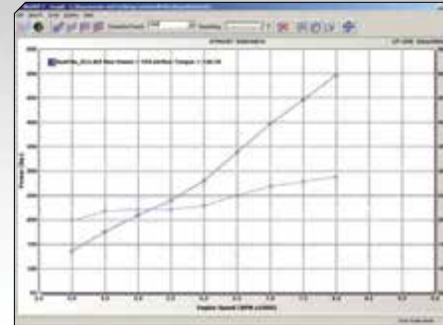
POWERSPORTS UPGRADE

REAL TIME TORQUE PACKAGE

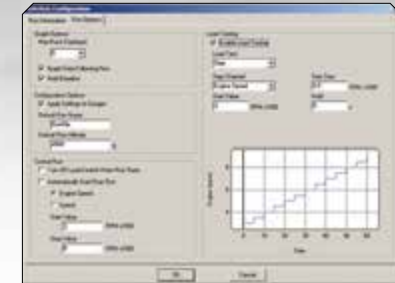


EDDY CURRENT LOAD ABSORPTION UNIT

The Eddy Current Load Absorption Unit can be upgraded to any Dynojet inertia model, such as the 200/200i, and enables the ability to perform loaded tests such as closed-loop RPM step tests when tuning fuel-injection with a Power Commander or Power Vision.



This graph is an example of a "step" test. This test allows you to define specific RPM points. During this test, each of these points are held and torque and horsepower readings are taken. These points are depicted by the square boxes shown in the graph.



The make run configuration/run option screen allows you to select which type of load test you would like to perform. These settings show preparation for a step test, customized to suit your individual needs.



X MODEL

POWERSPORTS UPGRADE

ADDITIONAL DRUM PACKAGE

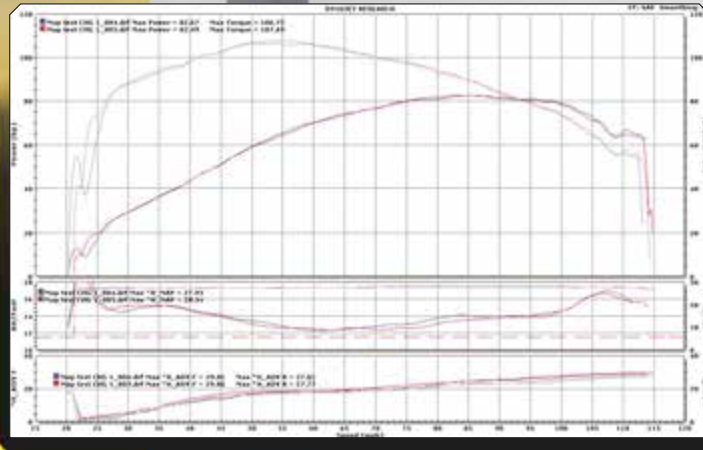
POWERSPORTS DYNAMOMETER X UPGRADE

The ultimate in versatility - The X upgrade is available for all 200i/250i models and adds an second drum and sliding carriage to accommodate ATV's, UTV's, Trikes and motorcycles

POWERSPORTS DYNAMOMETER OPTIONS

H-D DATA-LINK MODULE

Provides real-time data from Harley-Davidson Delphi ECM. Data is available to be viewed live in the dyno software WINPEP 7, and is recorded into the dyno run.

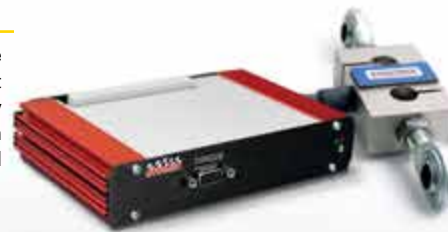


View and graph additional live data from the J1850 interface such as MAP, TPS, temp, timing, and more. The DJ-DLM is an essential tuning tool.



TORQUE MODULE OPTION

When performing loaded testing, the Torque Module option utilizes an integrated Torque Cell to quantify power absorption in an ultra precise and consistent manner. Loaded test files are then available for review and analysis in the WinPEP 7 software. During a steady state test the dynamometer operator can view torque in "real time", a great feature when performing live ECM tuning. Additional highlights of this system include a quick and effective calibration routine that can be accomplished in under a minute.



WIDE BAND AIR/FUEL RATIO SYSTEM

Tuning with a Dynojet dynamometer has never been easier! With the addition of our Wide Band Air/Fuel Ratio System, every dyno run can show you horsepower and torque, and the exact air/fuel ratio. This system is one of the most insightful tuning tools available today! You can easily identify lean or rich trends from idle to redline. Whether tuning a naturally aspirated "all motor" car, or a forced induction screamer, you will know the tune is right. Any shop involved with EFI mapping shouldn't be without the Dynojet Wide Band Air/Fuel Ratio System.

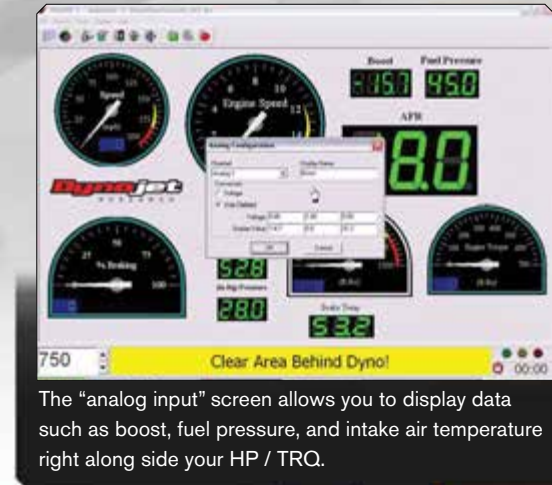


4 CHANNEL ANALOG MODULE

The analog module allows (4) additional 0-5v based sensors to be logged during dyno runs. This allows you to display data such as boost and fuel pressure, along side the HP / TRQ channels.

WinPEP 7 has a built in sensor calibration routine that makes the set up simple. You can choose from various supported sensors, or input the data from any 0-5v sensor on the market. The module simply mounts to the top of the Dynoware EX+ System and also includes a 5v reference output.

Manifold Pressure (boost) and Fuel Pressure sensors sold separately.



The "analog input" screen allows you to display data such as boost, fuel pressure, and intake air temperature right along side your HP / TRQ.

THERMOCOUPLE AMP

Enhancing the capabilities of the Analog module, the new Dynojet Thermocouple Amp Module is able to convert any Type K Thermocouple into a 0-5v based analog signal. The kit comes with the module, as well as a plug-n-play harness that connects to the Analog Module. There are two different kits available, one that has a range of 0-500 degree F and then a 0-2000 degree F version. Set up is quick and easy, and as always, this device is fully supported in our innovative dynamometer control software, WinPEP 7.



DUAL MULTI-AXIS COOLING FAN SYSTEM

This integrated cooling fan system option has adjustable arms and can move 1,800 CFM from each fan. These fans are controlled from the control pod.



AIR BRAKE

The Air brake can be added to the Model 200i or 200ix to quickly slow the drum after the run. This is recommended when testing two-stroke motorcycles which have poor engine braking.



EXTENDED CARRIAGE OPTION

This option is necessary for testing long wheelbase motorcycles. Accommodates up to 102", measured from rear axle to the leading edge of the front tire.

THE FOLDING RAMP OPTION

This option includes gas assist struts for one person operation. The ramp features a dual-angle moderate slope design to aid in loading/unloading lowered and longer wheelbase motorcycles.



THE POWER CLAMP & POWER CARRIAGE OPTION

This option allows the dyno operator to adjust the carriage length and clamp the front wheel from the control pod, while seated on the bike.



MONITOR TRAY OPTION ATTACHED TO CONTROL POD

The Monitor Tray supports the monitor, keyboard and mouse. It is adjustable for optimum placement.



DYNOWARE EX

DYNAMOMETER

HARDWARE MODULES

DYNAMOMETER EX+ HARDWARE

Dynoware EX+ dynamometer hardware uses the latest high speed technology to link your computer to the dyno. Every dyno system comes standard with 4 modules (listed below), and the Dynoware EX+ is easily upgraded to accommodate your needs. The modular design allows you to expand your testing capabilities as new modules are released.

ATMOSPHERIC SENSING MODULE:

The Atmospheric Sensing Module measures absolute pressure, air temperature, and relative humidity. These measurements are used by the WinPEP dynamometer software to correct power and torque measurements to standard atmospheric conditions according to an SAE, Standard, DIN, JIS, or EEC formula.

RPM MODULE:

The RPM Module receives and processes signals from up to 2 inductive pickups for measurement of engine RPM. Each input has an automatic gain circuit to compensate for a wide variance of ignition systems.

DYNAMOMETER I/O MODULE:

The Dynamometer Input/Output Module sends and receives data from the dynamometer and the handheld pendant. The module also contains a buzzer and light which are activated when either the tire or dynamometer speed limit is approached.

CPU MODULE:

The CPU Module contains a 32-bit processor which acquires data from the expansion modules and communicates the data to the computer running the WinPEP software. The processor queries the expansion modules to determine which modules are connected. The CPU Module fastens to an attractive stand for placement on the computer or work bench. Each additional module then plugs conveniently into the one below it, providing expansion for future modules.



DYNAMOMETER HARDWARE INSTALLED IN A 250I ABOVE GROUND MOTORCYCLE DYNO AND HARDWARE CART FOR PIT MODEL MOTORCYCLE DYNOS.

WINPEP 7

DYNAMOMETER SOFTWARE

ABOUT WINPEP7 SOFTWARE

Dynojet's WinPEP (Windows® Performance Evaluation Program) uses a Windows® File Manager style selection window, as well as an outline selection window to access previous runs and store new ones. Runs are stored by Make, Model, and Name.

OBJECTIVES

The Software Engineers at Dynojet understand your need to attain the maximum performance from the vehicles you evaluate. For this reason, they have developed a user-friendly interface which will allow you to easily develop new dyno runs, view previously stored runs, and compare multiple runs with the click of a mouse button. Whether you are new to the benefits of dyno testing or an experienced performance leader, the repeatability and diagnostic tools of the WinPEP software will give you the professional results you are looking for.

SYSTEM REQUIREMENTS

Dynojet recommends obtaining a computer system from a local supplier who will assemble the system from individual components. The benefit in doing this is twofold: 1) The components and software in a scratch-built system are usually of higher quality than the components used in mass-produced systems purchased from a typical computer superstore. 2) When you obtain a computer from a local builder you also get their services should a problem arise. While problems may be few and far between, having a local source for assistance can be invaluable.*

- Processor; 1.0 ghz Pentium or equivalent (minimum)
- Hard Drive; 40 Gigabyte or more
- 30 Megabytes of free hard disk space is required to install WinPEP 7
- RAM; 1 Gigabyte
- Monitor; 800 x 600, (SVGA), 256 color
- CD-ROM, RS232 serial port and 2 USB ports
- Software; Microsoft Windows XP/Vista
- Printer; (Must be color)

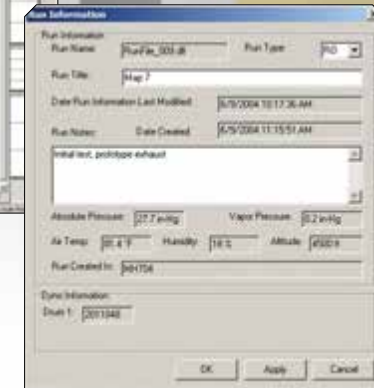
TRY IT TODAY

TO SEE ALL OF THE FEATURES OF THE WINPEP 7 SOFTWARE
VIST WWW.DYNOJET.COM AND DOWNLOAD A TRIAL VERSION.



Dynojet's WinPEP7 CD-ROM includes video tutorials to walk you through the features and functions of the software.

Detailed information about each run can be viewed with a simple "double-click" of a run file. Time, date, barometric pressure, humidity, etc. are all displayed.



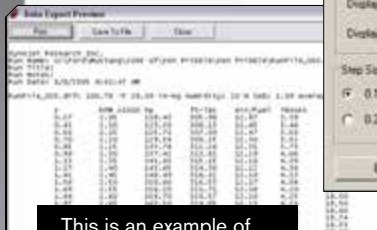
Printing options allow the user to add custom graphics such as your shop logo, which will be printed on the graphs given to your customers.



POWERSPORTS
DYNAMOMETER SOFTWARE



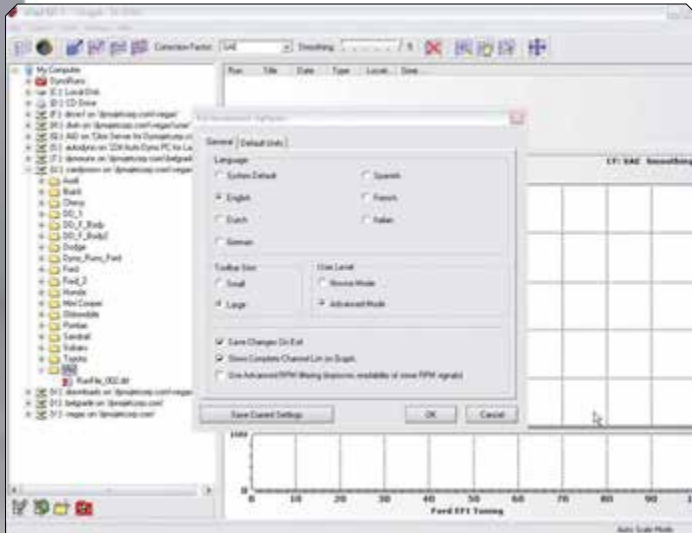
Use the "Export Graph" function to generate an image file in BMP, JPG, EMF or WMF file formats. This makes it possible for others to view run data without the need for special software.



This is an example of text-based data export.



You can use the "Export Data" function to either generate a detailed text file or a file that can be imported into programs like Excel. You can then use Excel (or similar programs) to create your own graphs or charts.



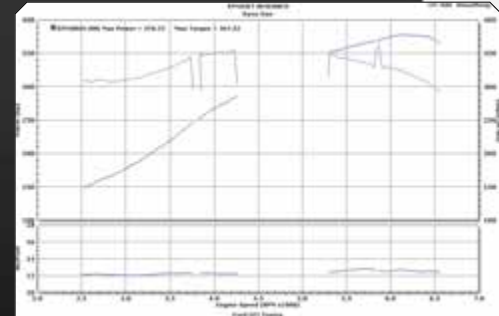
Regardless of where you are testing, the units of measurement and language can be selected to suit your needs. You can choose from either preset selections (US, Metric, Japanese) or custom settings from easy-to-use drop-down menus.

Using our Winpep software has just become easier! Engine RPM signals recorded by our inductive RPM cables can occasionally be very unsteady and difficult to graph correctly, especially with aftermarket ignition systems. This is due to excessive RF interference noise.

DYNOJET NOW OFFERS A SOLUTION FOR THIS! INTRODUCING THE RPM FILTER:

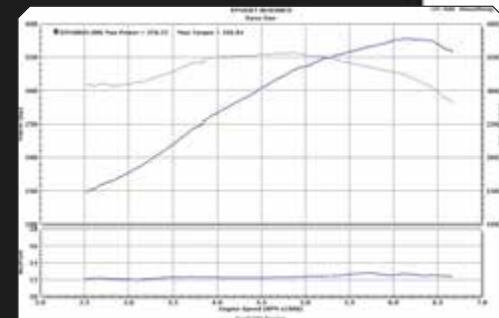
WITHOUT FILTER

Notice the missing sections of the graph caused by a poor RPM signal.



WITH FILTER

As you can see by, enabling the RPM Filter in Winpep 7 fills these missing sections to provide a clear and easy to interpret graph! The filter is restricted to only fill small sections of unusable engine RPM.



WINPEP 7 IS AVAILABLE TO ALL DYNOJET DYNAMOMETER OWNERS. CURRENT WINPEP 7 USERS CAN DOWNLOAD THE UPDATE FROM OUR WEBSITE, WWW.DYNOJET.COM AND DYNAMOMETER OWNERS USING WINPEP 6 CAN ALSO UPGRADE BY PURCHASING WINPEP7. PLEASE CONTACT YOUR DYNOJET DYNAMOMETER SALES REPRESENTATIVE FOR DETAILS.

DYNAMOMETER TRAINING

Dynojet provides a "one day" class for one technician with every Dynamometer purchase. Techniques for maximizing the profit potential of your Dynojet dynamometer will be discussed. Classes are held monthly at our Las Vegas facility.

The Basic course covers Dynamometer operations including;

- » DYNAMOMETER SAFETY, AND ROOM SET-UP
- » DYNAMOMETER CHECK AND SERVICE
- » VEHICLE INSPECTION, LOADING AND UNLOADING ON THE DYNAMOMETER
- » WINPEP 7 SOFTWARE/COMPUTER USAGE
- » BASIC DYNAMOMETER RUNS INCLUDING ROLL-ONS, ALL-GEARS, AND FAST ACCELERATION.

Current Dynojet dyno owners are also invited to attend this class to get up to date dyno information and techniques. Space permitting, contact your Dynojet representative for details

On-Site Training Also Available!

On-site training at your facility is available for an additional fee. Training includes a factory trained professional educating your staff on your dyno.

This is normally a two day training course at your facility. Please ask your Dynojet sales representative for more information.



TECHNICAL SUPPORT

To provide our customers with industry leading support, 24 hours a day, 7 days a week, we have created www.winpep.com, a website that is available only to registered Dynojet Dynamometer owners. Once registered, you can download available Software Updates, read through FAQ & Tech Tips, find RPM pickup locations and much more. The best thing about www.winpep.com is that our dynamometer owners contribute to the website. This guarantees that the information gained from the site applies to the "real world". Don't see what you're looking for? E-mail us and we will get it for you and put it up on the site.

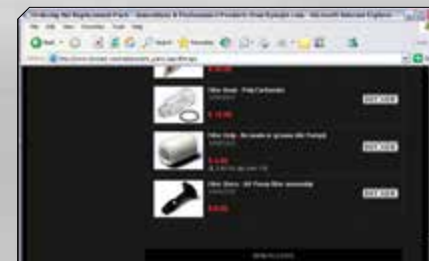
WINPEP.COM

A user support web site is accessible by selecting "WinPEP Direct" under the "Help" menu in WinPEP 7. Gain access to user guides and user support forums within the WinPEP software.



ONLINE PARTS ORDERING

You can also visit the Dynojet Web site to order a variety of replacement parts: axle straps, car tie-downs, filters, water aspirators, RPM inductives, O2 sensors and more.





The Era of Fuel Injection has arrived. Year after year, more bikes will come equipped with fuel injection systems. Dynojet has invested in the future and will offer the revolutionary Power Commander for many bikes.

Although the Power Commander is supplied with maps for many popular applications, there is a need for regional tuning centers, which can optimize the fuel and ignition curves for local customers as well as develop new maps for given combinations.



THE EASY TO USE POWER COMMANDER CONTROL CENTER SOFTWARE IS COMPATIBLE WITH WINDOWS® XP/VISTA COMPUTERS. THE ADVANCED FEATURES INCLUDE CYLINDER TRIM FUEL OFFSET, THROTTLE POSITION SENSOR CALIBRATION AND A MAP COMPARE FEATURE.

HOW TO BECOME A

"DYNOJET APPROVED POWER COMMANDER TUNING CENTER"

1. CALL A DYNOJET SALES REPRESENTATIVE AT 800-992-3525.
2. PURCHASE OR UPGRADE TO A DYNOJET MODEL 250, 250I OR 250IX LOAD-CONTROL DYNAMOMETER. ALL MODEL 150, 200 AND 200I DYNAMOMETERS CAN BE UPGRADED.
3. PURCHASE THE NEW DYNOJET REAL-TIME AIR/FUEL RATIO MODULE. THIS IS PROBABLY THE BEST DYNO ACCESSORY EVER PRODUCED AND CAN BE USED WITH ANY MODEL DYNOJET DYNAMOMETER. ALL MODEL 150 DYNAMOMETERS CAN BE UPGRADED ALONG WITH THE DYNOWARE EX+ UPGRADE.
4. SUBMIT A TUNING CENTER APPLICATION. A TECHNICIAN MUST COMPLETE AND PASS A THREE DAY FUEL INJECTION AND POWER COMMANDER SCHOOL COURSE AT DYNOJET IN LAS VEGAS.
5. SIGN A POWER COMMANDER TUNING CENTER AGREEMENT WITH DYNOJET RESEARCH.

There are many advantages to becoming a "Dynojet Approved Power Commander Tuning Center," which include:

- » A NEW PROFIT CENTER, WHICH WILL DRAW NEW CUSTOMERS TO YOUR STORE
- » SPECIAL PRICING ON ALL POWER COMMANDER PURCHASES
- » SHOP LISTING INSIDE EVERY POWER COMMANDER PACKAGE
- » SHOP LISTING AND FULL PAGE ON WWW.POWERCOMMANDER.COM

PLEASE NOTE THAT THE NUMBER AND LOCATION OF DYNOJET APPROVED POWER COMMANDER TUNING CENTERS IS AT THE SOLE DISCRETION OF DYNOJET RESEARCH INC.

CONTACT DYNOJET FOR FURTHER INFORMATION OR TO RESERVE A SEAT (800) 992-3525 / TRAINING@DYNOJET.COM



POWER VISION TUNING COURSE

The Dynojet Power Vision is the most advanced flash-tuning device available on the market for Harley-Davidson motorcycles with the Delphi ECM. Now you can learn how to professionally create custom EFI calibrations for H-D models, including 2012, using the Power Vision and WinPV software. The Power Vision provides OEM-level tuning capabilities and data-logging functions. This course will provide students with the key principles to understand how to properly "flash-tune" H-D motorcycles with the Delphi ECM, as taught by industry expert instructors specializing in this category. The course consists of 3 days of instruction in Las Vegas at Dynojet headquarters.

MINIMUM REQUIREMENTS:

- » BASIC KNOWLEDGE OF THE WINDOWS OPERATING SYSTEM (FILE MAINTENANCE - SAVING/OPENING FILES)
- » PROFICIENT OPERATING THE DYNOJET 250/250I LOAD-CONTROL DYNAMOMETER
- » PROFICIENT USE OF DYNOJET WINPEP 7 DYNO SOFTWARE



TUNING LINK POWER COMMANDER CONTROL CENTER SOFTWARE

The Dynojet Fuel Injection Tuning Link is an innovative piece of software that allows the automatic fuel curve optimization of a Power Commander equipped motorcycle. The Tuning Link software interfaces the Power Commander with a Model 250i Load Control Dynamometer.

The Tuning Link software controls both the Dynamometer and the Power Commander at the same time. The dyno operator simply follows the instructions on the screen.

By utilizing the Dynojet "Real Time" air/fuel ratio monitoring equipment and latest "load control" Dynamometer technology, the Tuning Link monitors the current air/fuel ratio at over one hundred and forty different points. At the same time, the Tuning Link automatically calculates the correct fuel adjustment to achieve the user desired air/fuel ratio. Once calculated, the Tuning Link uploads these new fuel values to the Power Commander and saves a copy of the file.

The Tuning Link has the ability to map fuel curves in both "static" and "dynamic" modes. This assures that the generated fuel curves are correct for both steady state cruising as well as during aggressive on/off throttle movements.



THE AIR/FUEL RATIO CAN BE SET FOR CRUISING AND POWER RANGES. THIS TECHNOLOGY ALLOWS THE DYNO OPERATOR TO ACCURATELY "OPTIMIZE" THE BIKE IN A VERY SHORT TIME, REGARDLESS OF THE BIKE'S MODIFICATIONS.



THIS SCREEN SHOWS THE SOFTWARE IN ACTION DURING A DYNAMIC 100% THROTTLE ROLL-ON TEST. DYNAMIC PART THROTTLE ROLL-ONS CAN BE ACCOMPLISHED WITH COMPLETE ACCURACY BY UTILIZING THE DYNOJET THROTTLE STOP.

CONTACT DYNOJET FOR FURTHER INFORMATION OR TO RESERVE A SEAT (800) 992-3525 / TRAINING@DYNOJET.COM

TOLL FREE: 1-800-992-3525

2012 Dynamometer POWERSPORTS

POWERSPORTS
DYNAMOMETER
TRAINING